

# Estadística Mensual

## Faena - Exportación











INSTITUTO NACIONAL DE CARNES  
*NATIONAL MEAT INSTITUTE*  
Dirección de Información y Análisis Económico  
*Economic Analysis & Information Division*

Rincón 545/549 - C.P. 11.000  
Montevideo - Uruguay  
Tels.: (598-2) 916 0430  
(598-2) 916 1989  
inacarnes@inac.gub.uy  
diae@inac.gub.uy  
www.inac.gub.uy

FAENA DE BOVINOS, OVINOS, PORCINOS Y EQUINOS  
en establecimientos habilitados a nivel nacional

*BOVINE, SHEEP, SWINE AND HORSE SLAUGHTER  
on licensed processing plants*

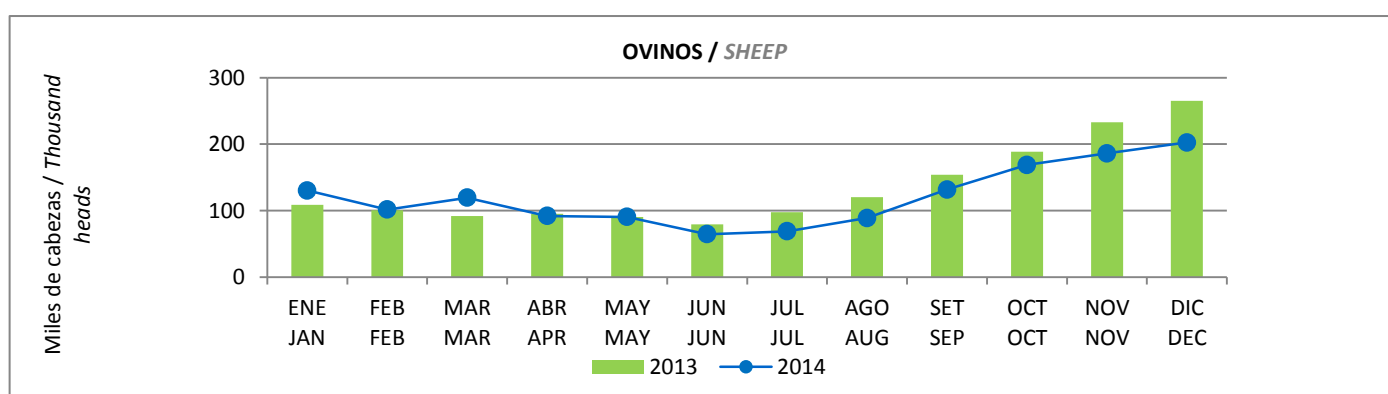
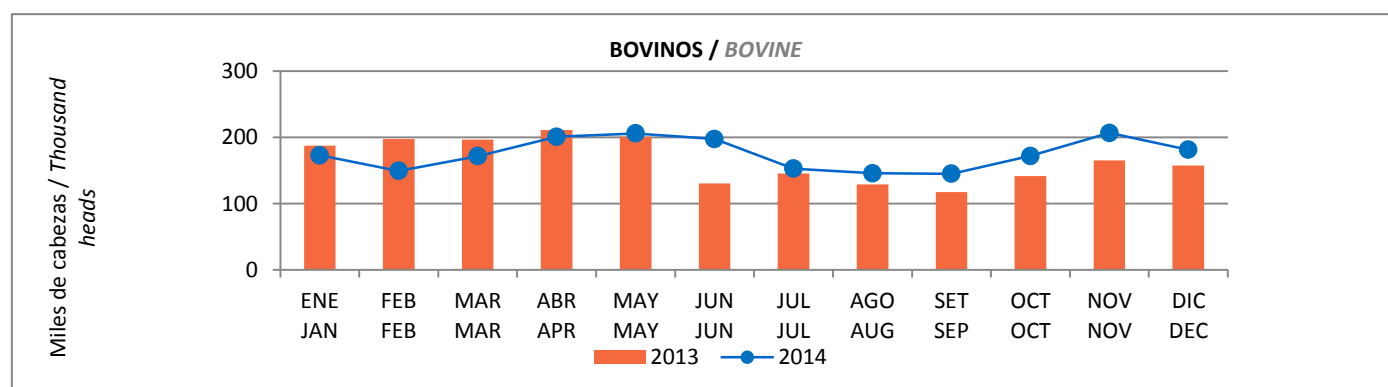
**Cabezas**  
*Heads*

| ESPECIE   | ENE / DIC - JAN / DEC | ENE / DIC - JAN / DEC | Variación Porcentual /<br><i>Percent Change</i>   |
|---|-----------------------|-----------------------|---|
|   | 2014                  | 2013                  |   |
|  Bovinos / <i>Bovine</i>   | 2.103.695             | 1.982.441             |  <b>6,1</b>    |
|  Ovinos / <i>Sheep</i>     | 1.444.587             | 1.624.735             |  <b>-11,1</b>  |
|  Porcinos / <i>Swine</i>  | 186.523               | 200.429               |  <b>-6,9</b>   |
|  Equinos / <i>Horses</i> | 37.710                | 29.268                |  <b>28,8</b> |

FAENA POR ESPECIE  
SLAUGHTER BY SPECIES  
2013 - 2014

Cabezas / Heads

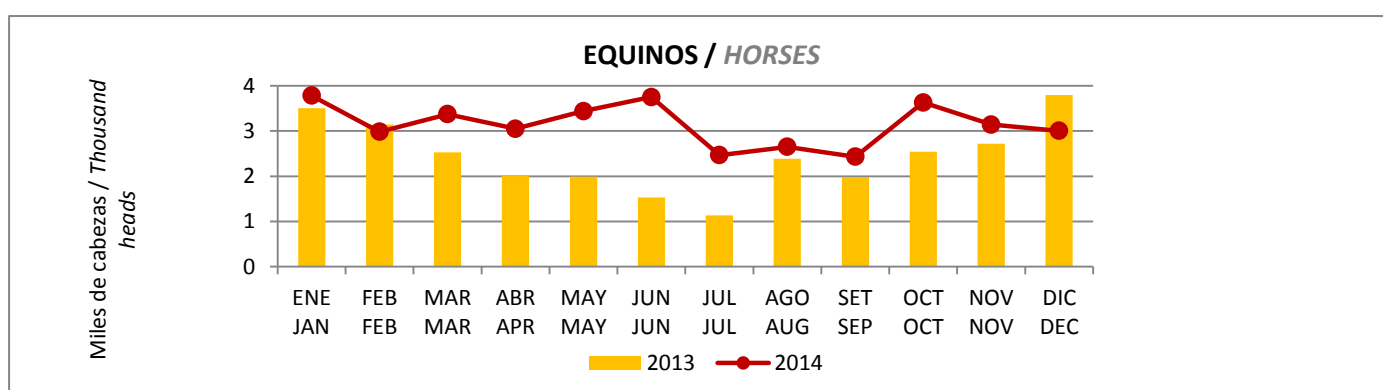
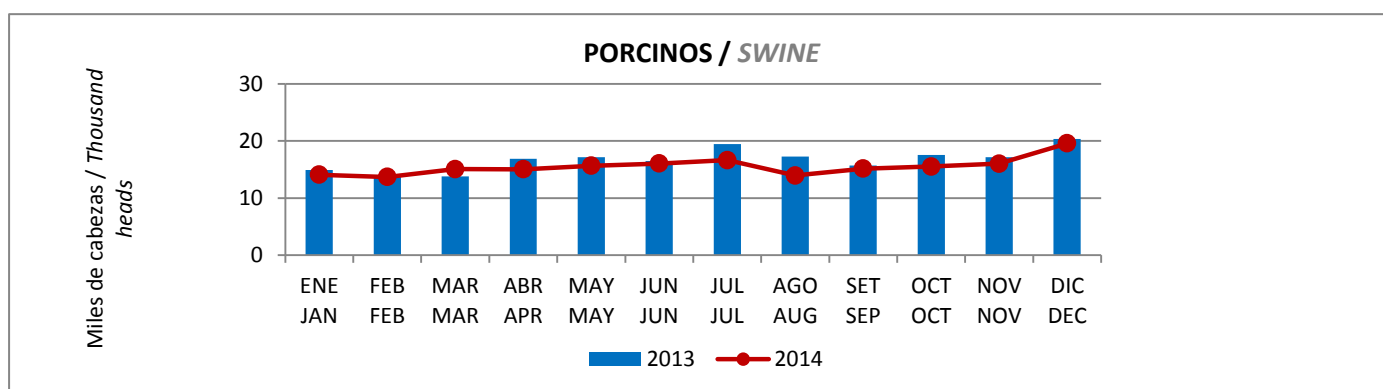
| MES / MONTH                        | BOVINOS   |           | % Variación | OVINOS    |           | % Variación |
|------------------------------------|-----------|-----------|-------------|-----------|-----------|-------------|
|                                    | BOVINE    |           | % Change    | SHEEP     |           | % Change    |
|                                    | 2014      | 2013      | 2014 / 2013 | 2014      | 2013      | 2014 / 2013 |
| ENERO/JANUARY                      | 173.107   | 187.851   | ↓ -7,8      | 130.194   | 108.721   | ↑ 19,8      |
| FEBRERO/FEBRUARY                   | 149.501   | 197.737   | ↓ -24,4     | 101.656   | 100.370   | ↑ 1,3       |
| MARZO/MARCH                        | 171.875   | 196.702   | ↓ -12,6     | 119.283   | 92.025    | ↑ 29,6      |
| PRIMER TRIMESTRE / FIRST QUARTER   | 494.483   | 582.290   | ↓ -15,1     | 351.133   | 301.116   | ↑ 16,6      |
| ABRIL/APRIL                        | 200.929   | 211.288   | ↓ -4,9      | 91.859    | 95.194    | ↓ -3,5      |
| MAYO/MAY                           | 206.022   | 201.168   | ↑ 2,4       | 90.585    | 90.537    | → 0,1       |
| JUNIO/JUNE                         | 197.648   | 130.661   | ↑ 51,3      | 64.353    | 79.346    | ↓ -18,9     |
| SEGUNDO TRIMESTRE / SECOND QUARTER | 604.599   | 543.117   | ↑ 11,3      | 246.797   | 265.077   | ↓ -6,9      |
| PRIMER SEMESTRE/FIRST SEMESTER     | 1.099.082 | 1.125.407 | ↓ -2,3      | 597.930   | 566.193   | ↑ 5,6       |
| JULIO/JULY                         | 152.974   | 145.765   | ↑ 4,9       | 68.830    | 97.607    | ↓ -29,5     |
| AGOSTO/AUGUST                      | 146.013   | 129.048   | ↑ 13,1      | 88.784    | 120.390   | ↓ -26,3     |
| SETIEMBRE/SEPTEMBER                | 145.178   | 117.489   | ↑ 23,6      | 131.720   | 153.917   | ↓ -14,4     |
| TERCER TRIMESTRE/THIRD QUARTER     | 444.165   | 392.302   | ↑ 13,2      | 289.334   | 371.914   | ↓ -22,2     |
| OCTUBRE/OCTOBER                    | 172.041   | 141.810   | ↑ 21,3      | 168.791   | 188.449   | ↓ -10,4     |
| NOVIEMBRE/NOVEMBER                 | 206.925   | 165.439   | ↑ 25,1      | 186.056   | 233.014   | ↓ -20,2     |
| DICIEMBRE/DECEMBER                 | 181.482   | 157.483   | ↑ 15,2      | 202.476   | 265.165   | ↓ -23,6     |
| CUARTO TRIMESTRE/FOURTH QUARTER    | 560.448   | 464.732   | ↑ 20,6      | 557.323   | 686.628   | ↓ -18,8     |
| SEGUNDO SEMESTRE/SECOND SEMESTER   | 1.004.613 | 857.034   | ↑ 17,2      | 846.657   | 1.058.542 | ↓ -20,0     |
| TOTAL                              | 2.103.695 | 1.982.441 | ↑ 6,1       | 1.444.587 | 1.624.735 | ↓ -11,1     |



FAENA POR ESPECIE  
SLAUGHTER BY SPECIES  
2013 - 2014

Cabezas / Heads

| MES / MONTH                        | PORCINOS |         | % Variación |       | EQUINOS |        | % Variación |       |
|------------------------------------|----------|---------|-------------|-------|---------|--------|-------------|-------|
|                                    | SWINE    |         | % Change    |       | HORSES  |        | % Change    |       |
|                                    | 2014     | 2013    | 2014 / 2013 |       | 2014    | 2013   | 2014 / 2013 |       |
| ENERO/JANUARY                      | 14.106   | 14.914  | ↓           | -5,4  | 3.785   | 3.505  | ↑           | 8,0   |
| FEBRERO/FEBRUARY                   | 13.710   | 13.695  | →           | 0,1   | 2.983   | 3.146  | ↓           | -5,2  |
| MARZO/MARCH                        | 15.078   | 13.782  | ↑           | 9,4   | 3.373   | 2.527  | ↑           | 33,5  |
| PRIMER TRIMESTRE / FIRST QUARTER   | 42.894   | 42.391  | ↑           | 1,2   | 10.141  | 9.178  | ↑           | 10,5  |
| ABRIL/APRIL                        | 15.039   | 16.893  | ↓           | -11,0 | 3.051   | 2.003  | ↑           | 52,3  |
| MAYO/MAY                           | 15.652   | 17.182  | ↓           | -8,9  | 3.441   | 1.989  | ↑           | 73,0  |
| JUNIO/JUNE                         | 16.060   | 16.472  | ↓           | -2,5  | 3.752   | 1.531  | ↑           | 145,1 |
| SEGUNDO TRIMESTRE / SECOND QUARTER | 46.751   | 50.547  | ↓           | -7,5  | 10.244  | 5.523  | ↑           | 85,5  |
| PRIMER SEMESTRE/FIRST SEMESTER     | 89.645   | 92.938  | ↓           | -3,5  | 20.385  | 14.701 | ↑           | 38,7  |
| JULIO/JULY                         | 16.646   | 19.465  | ↓           | -14,5 | 2.465   | 1.130  | ↑           | 118,1 |
| AGOSTO/AUGUST                      | 13.945   | 17.256  | ↓           | -19,2 | 2.652   | 2.390  | ↑           | 11,0  |
| SETIEMBRE/SEPTEMBER                | 15.146   | 15.727  | ↓           | -3,7  | 2.431   | 1.983  | ↑           | 22,6  |
| TERCER TRIMESTRE/THIRD QUARTER     | 45.737   | 52.448  | ↓           | -12,8 | 7.548   | 5.503  | ↑           | 37,2  |
| OCTUBRE/OCTOBER                    | 15.531   | 17.534  | ↓           | -11,4 | 3.630   | 2.544  | ↑           | 42,7  |
| NOVIEMBRE/NOVEMBER                 | 16.018   | 17.169  | ↓           | -6,7  | 3.144   | 2.723  | ↑           | 15,5  |
| DICIEMBRE/DECEMBER                 | 19.592   | 20.340  | ↓           | -3,7  | 3.003   | 3.797  | ↓           | -20,9 |
| CUARTO TRIMESTRE/FOURTH QUARTER    | 51.141   | 55.043  | ↓           | -7,1  | 9.777   | 9.064  | ↑           | 7,9   |
| SEGUNDO SEMESTRE/SECOND SEMESTER   | 96.878   | 107.491 | ↓           | -9,9  | 17.325  | 14.567 | ↑           | 18,9  |
| TOTAL                              | 186.523  | 200.429 | ↓           | -6,9  | 37.710  | 29.268 | ↑           | 28,8  |



## FAENA POR CATEGORÍA - BOVINOS

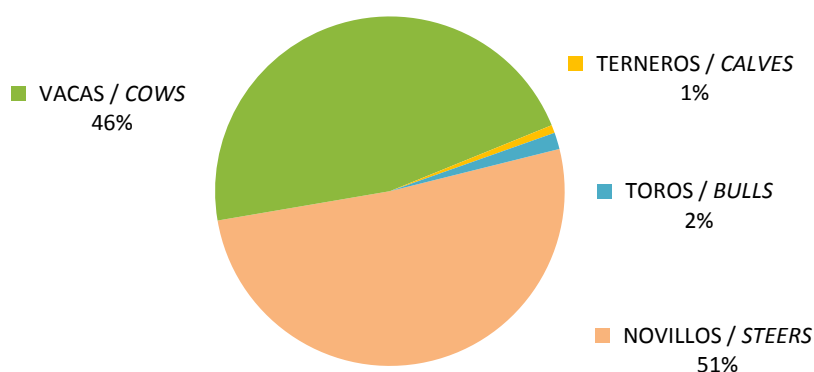
## SLAUGHTER BY CLASS - BOVINE

2014

Cabezas / Heads

| MES / MONTH                        | NOVILLOS         | VACAS          | TERNEROS      | TOROS         | TOTAL            |
|------------------------------------|------------------|----------------|---------------|---------------|------------------|
|                                    | STEERS           | COWS           | CALVES        | BULLS         |                  |
| ENERO/JANUARY                      | 87.450           | 81.067         | 2.077         | 2.513         | 173.107          |
| FEBRERO/FEBRUARY                   | 74.995           | 70.529         | 1.997         | 1.980         | 149.501          |
| MARZO/MARCH                        | 96.356           | 71.540         | 1.734         | 2.245         | 171.875          |
| PRIMER TRIMESTRE / FIRST QUARTER   | 258.801          | 223.136        | 5.808         | 6.738         | 494.483          |
| ABRIL/APRIL                        | 105.154          | 91.059         | 1.374         | 3.342         | 200.929          |
| MAYO/MAY                           | 109.176          | 93.032         | 979           | 2.835         | 206.022          |
| JUNIO/JUNE                         | 97.203           | 96.205         | 865           | 3.375         | 197.648          |
| SEGUNDO TRIMESTRE / SECOND QUARTER | 311.533          | 280.296        | 3.218         | 9.552         | 604.599          |
| PRIMER SEMESTRE/FIRST SEMESTER     | 570.334          | 503.432        | 9.026         | 16.290        | 1.099.082        |
| JULIO/JULY                         | 74.253           | 75.132         | 840           | 2.749         | 152.974          |
| AGOSTO/AUGUST                      | 72.992           | 70.193         | 652           | 2.176         | 146.013          |
| SETIEMBRE/SEPTEMBER                | 77.672           | 64.604         | 877           | 2.025         | 145.178          |
| TERCER TRIMESTRE/THIRD QUARTER     | 224.917          | 209.929        | 2.369         | 6.950         | 444.165          |
| OCTUBRE/OCTOBER                    | 91.778           | 76.574         | 1.154         | 2.535         | 172.041          |
| NOVIEMBRE/NOVEMBER                 | 101.265          | 100.640        | 1.338         | 3.682         | 206.925          |
| DICIEMBRE/DECEMBER                 | 88.850           | 88.089         | 1.703         | 2.840         | 181.482          |
| CUARTO TRIMESTRE/FOURTH QUARTER    | 281.893          | 265.303        | 4.195         | 9.057         | 560.448          |
| SEGUNDO SEMESTRE/SECOND SEMESTER   | 506.810          | 475.232        | 6.564         | 16.007        | 1.004.613        |
| <b>TOTAL</b>                       | <b>1.077.144</b> | <b>978.664</b> | <b>15.590</b> | <b>32.297</b> | <b>2.103.695</b> |

FAENA DE BOVINOS POR CATEGORIA / BOVINE SLAUGHTER BY CLASS



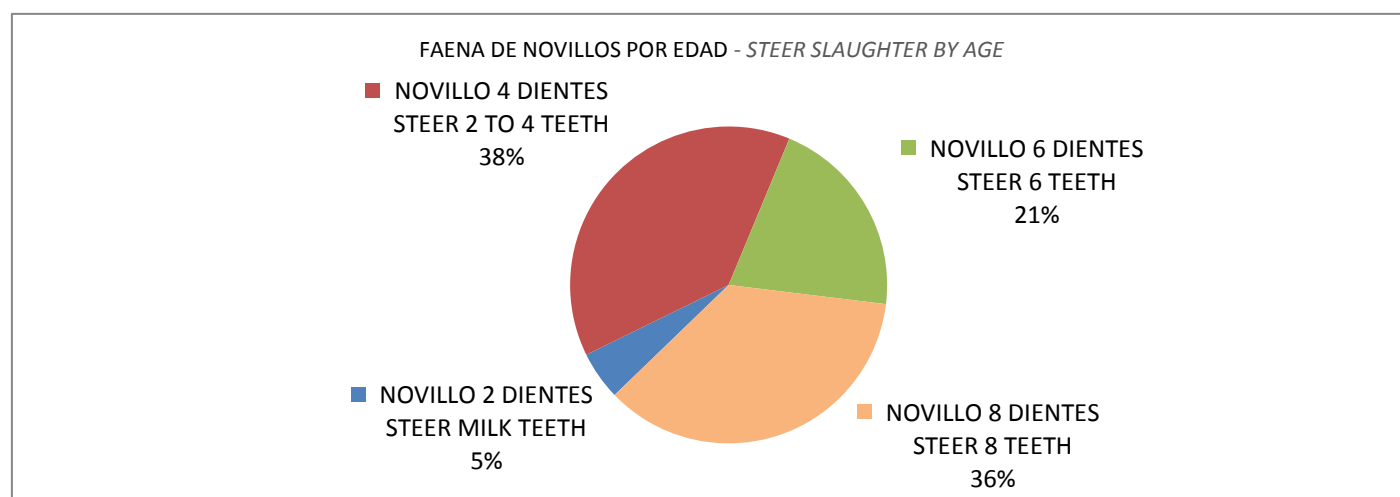
## FAENA POR CATEGORÍA - NOVILLOS POR EDAD

## SLAUGHTER BY CLASS - STEERS BY AGE

2014

Cabezas / Heads

| MES / MONTH                        | NOVILLO 2<br>DIENTES | NOVILLO 4<br>DIENTES  | NOVILLO 6<br>DIENTES | NOVILLO 8<br>DIENTES | TOTAL     |
|------------------------------------|----------------------|-----------------------|----------------------|----------------------|-----------|
|                                    | STEER<br>MILK TEETH  | STEER 2 TO<br>4 TEETH | STEER<br>6 TEETH     | STEER<br>8 TEETH     |           |
| ENERO/JANUARY                      | 3.071                | 39.656                | 17.771               | 26.952               | 87.450    |
| FEBRERO/FEBRUARY                   | 2.212                | 26.406                | 16.747               | 29.630               | 74.995    |
| MARZO/MARCH                        | 2.779                | 31.438                | 22.586               | 39.553               | 96.356    |
| PRIMER TRIMESTRE / FIRST QUARTER   | 8.062                | 97.500                | 57.104               | 96.135               | 258.801   |
| ABRIL/APRIL                        | 4.559                | 31.426                | 26.588               | 42.581               | 105.154   |
| MAYO/MAY                           | 5.208                | 31.081                | 26.396               | 46.491               | 109.176   |
| JUNIO/JUNE                         | 5.313                | 29.272                | 22.088               | 40.530               | 97.203    |
| SEGUNDO TRIMESTRE / SECOND QUARTER | 15.080               | 91.779                | 75.072               | 129.602              | 311.533   |
| PRIMER SEMESTRE/FIRST SEMESTER     | 23.142               | 189.279               | 132.176              | 225.737              | 570.334   |
| JULIO/JULY                         | 5.866                | 28.446                | 14.327               | 25.614               | 74.253    |
| AGOSTO/AUGUST                      | 5.366                | 34.242                | 11.905               | 21.479               | 72.992    |
| SETIEMBRE/SEPTEMBER                | 5.719                | 35.877                | 12.424               | 23.652               | 77.672    |
| TERCER TRIMESTRE/THIRD QUARTER     | 16.951               | 98.565                | 38.656               | 70.745               | 224.917   |
| OCTUBRE/OCTOBER                    | 5.345                | 40.710                | 14.730               | 30.993               | 91.778    |
| NOVIEMBRE/NOVEMBER                 | 4.405                | 42.949                | 19.047               | 34.864               | 101.265   |
| DICIEMBRE/DECEMBER                 | 3.560                | 43.473                | 18.046               | 23.771               | 88.850    |
| CUARTO TRIMESTRE/FOURTH QUARTER    | 13.310               | 127.132               | 51.823               | 89.628               | 281.893   |
| SEGUNDO SEMESTRE/SECOND SEMESTER   | 30.261               | 225.697               | 90.479               | 160.373              | 506.810   |
| TOTAL                              | 53.403               | 414.976               | 222.655              | 386.110              | 1.077.144 |



## FAENA POR CATEGORÍA - VACAS POR EDAD

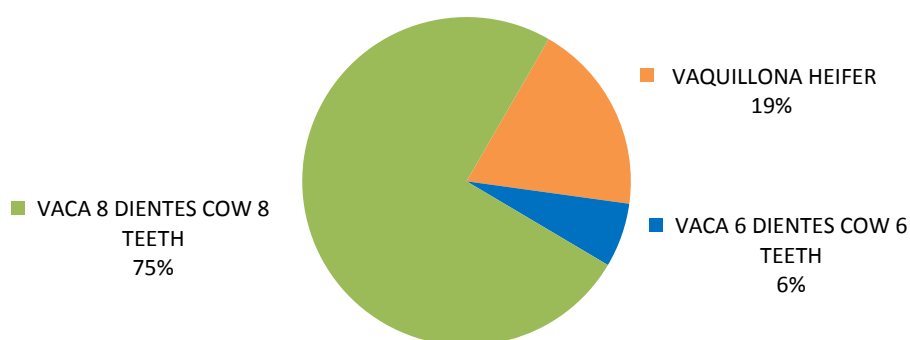
SLAUGHTER BY CLASS - COWS BY AGE

2014

Cabezas / Heads

| MES / MONTH                        | VAQUILLONA | VACA 6<br>DIENTES | VACA 8<br>DIENTES | TOTAL   |
|------------------------------------|------------|-------------------|-------------------|---------|
|                                    | HEIFER     | COW 6<br>TEETH    | COW 8<br>TEETH    |         |
| ENERO/JANUARY                      | 15.287     | 5.482             | 60.298            | 81.067  |
| FEBRERO/FEBRUARY                   | 12.613     | 5.029             | 52.887            | 70.529  |
| MARZO/MARCH                        | 13.225     | 4.289             | 54.026            | 71.540  |
| PRIMER TRIMESTRE / FIRST QUARTER   | 41.125     | 14.800            | 167.211           | 223.136 |
| ABRIL/APRIL                        | 15.133     | 5.471             | 70.455            | 91.059  |
| MAYO/MAY                           | 14.876     | 5.681             | 72.475            | 93.032  |
| JUNIO/JUNE                         | 15.663     | 5.653             | 74.889            | 96.205  |
| SEGUNDO TRIMESTRE / SECOND QUARTER | 45.672     | 16.805            | 217.819           | 280.296 |
| PRIMER SEMESTRE/FIRST SEMESTER     | 86.797     | 31.605            | 385.030           | 503.432 |
| JULIO/JULY                         | 14.723     | 4.532             | 55.877            | 75.132  |
| AGOSTO/AUGUST                      | 15.134     | 4.509             | 50.550            | 70.193  |
| SETIEMBRE/SEPTEMBER                | 14.734     | 4.247             | 45.623            | 64.604  |
| TERCER TRIMESTRE/THIRD QUARTER     | 44.591     | 13.288            | 152.050           | 209.929 |
| OCTUBRE/OCTOBER                    | 16.217     | 4.606             | 55.751            | 76.574  |
| NOVIEMBRE/NOVEMBER                 | 20.199     | 6.421             | 74.020            | 100.640 |
| DICIEMBRE/DECEMBER                 | 16.728     | 5.985             | 65.376            | 88.089  |
| CUARTO TRIMESTRE/FOURTH QUARTER    | 53.144     | 17.012            | 195.147           | 265.303 |
| SEGUNDO SEMESTRE/SECOND SEMESTER   | 97.735     | 30.300            | 347.197           | 475.232 |
| TOTAL                              | 184.532    | 61.905            | 732.227           | 978.664 |

FAENA DE VACAS POR EDAD / COW SLAUGHTER BY AGE



## FAENA POR CATEGORÍA - OVINOS

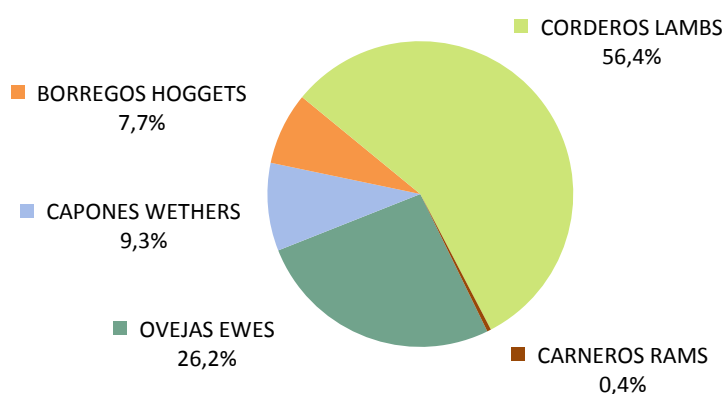
## SLAUGHTER BY CLASS - SHEEP

2014

Cabezas / Heads

| MES / MONTH                        | OVEJAS  | CAPONES | BORREGOS | CORDEROS | CARNEROS | TOTAL     |
|------------------------------------|---------|---------|----------|----------|----------|-----------|
|                                    | EWES    | WETHERS | HOGGETS  | LAMBS    | RAMS     |           |
| ENERO/JANUARY                      | 43.869  | 16.690  | 10.954   | 57.940   | 741      | 130.194   |
| FEBRERO/FEBRUARY                   | 43.832  | 11.284  | 9.112    | 37.131   | 297      | 101.656   |
| MARZO/MARCH                        | 51.352  | 10.512  | 10.554   | 46.311   | 554      | 119.283   |
| PRIMER TRIMESTRE / FIRST QUARTER   | 139.053 | 38.486  | 30.620   | 141.382  | 1.592    | 351.133   |
| ABRIL/APRIL                        | 41.864  | 7.686   | 10.250   | 31.638   | 421      | 91.859    |
| MAYO/MAY                           | 35.663  | 7.151   | 10.155   | 36.946   | 670      | 90.585    |
| JUNIO/JUNE                         | 19.323  | 2.738   | 5.785    | 36.213   | 294      | 64.353    |
| SEGUNDO TRIMESTRE / SECOND QUARTER | 96.850  | 17.575  | 26.190   | 104.797  | 1.385    | 246.797   |
| PRIMER SEMESTRE/FIRST SEMESTER     | 235.903 | 56.061  | 56.810   | 246.179  | 2.977    | 597.930   |
| JULIO/JULY                         | 16.113  | 2.407   | 5.127    | 44.893   | 290      | 68.830    |
| AGOSTO/AUGUST                      | 16.696  | 9.734   | 3.960    | 58.241   | 153      | 88.784    |
| SETIEMBRE/SEPTEMBER                | 18.683  | 13.650  | 6.008    | 92.995   | 384      | 131.720   |
| TERCER TRIMESTRE/THIRD QUARTER     | 51.492  | 25.791  | 15.095   | 196.129  | 827      | 289.334   |
| OCTUBRE/OCTOBER                    | 25.849  | 16.690  | 10.143   | 115.495  | 614      | 168.791   |
| NOVIEMBRE/NOVEMBER                 | 37.510  | 20.205  | 13.230   | 114.360  | 751      | 186.056   |
| DICIEMBRE/DECEMBER                 | 27.858  | 15.500  | 15.328   | 142.992  | 798      | 202.476   |
| CUARTO TRIMESTRE/FOURTH QUARTER    | 91.217  | 52.395  | 38.701   | 372.847  | 2.163    | 557.323   |
| SEGUNDO SEMESTRE/SECOND SEMESTER   | 142.709 | 78.186  | 53.796   | 568.976  | 2.990    | 846.657   |
| TOTAL                              | 378.612 | 134.247 | 110.606  | 815.155  | 5.967    | 1.444.587 |

FAENA POR CATEGORIA - OVINOS / SLAUGHTER BY CLASS



FAENA POR CATEGORÍA - PORCINOS Y EQUINOS  
 SLAUGHTER BY CLASS - SWINE AND HORSES  
 2014

Cabezas / Heads

| MES / MONTH                        | PORCINOS / SWINE |          |         | EQUINOS<br>HORSES |
|------------------------------------|------------------|----------|---------|-------------------|
|                                    | CERDOS           | LECHONES | TOTAL   |                   |
|                                    | PIGS             | PIGLETS  |         |                   |
| ENERO/JANUARY                      | 13.564           | 542      | 14.106  | 3.785             |
| FEBRERO/FEBRUARY                   | 13.157           | 553      | 13.710  | 2.983             |
| MARZO/MARCH                        | 14.150           | 928      | 15.078  | 3.373             |
| PRIMER TRIMESTRE / FIRST QUARTER   | 40.871           | 2.023    | 42.894  | 10.141            |
| ABRIL/APRIL                        | 13.513           | 1.526    | 15.039  | 3.051             |
| MAYO/MAY                           | 13.500           | 2.152    | 15.652  | 3.441             |
| JUNIO/JUNE                         | 13.055           | 3.005    | 16.060  | 3.752             |
| SEGUNDO TRIMESTRE / SECOND QUARTER | 40.068           | 6.683    | 46.751  | 10.244            |
| PRIMER SEMESTRE/FIRST SEMESTER     | 80.939           | 8.706    | 89.645  | 20.385            |
| JULIO/JULY                         | 14.075           | 2.571    | 16.646  | 2.465             |
| AGOSTO/AUGUST                      | 12.534           | 1.411    | 13.945  | 2.652             |
| SETIEMBRE/SEPTEMBER                | 13.752           | 1.394    | 15.146  | 2.431             |
| TERCER TRIMESTRE/THIRD QUARTER     | 40.361           | 5.376    | 45.737  | 7.548             |
| OCTUBRE/OCTOBER                    | 13.472           | 2.059    | 15.531  | 3.630             |
| NOVIEMBRE/NOVEMBER                 | 12.878           | 3.140    | 16.018  | 3.144             |
| DICIEMBRE/DECEMBER                 | 14.682           | 4.910    | 19.592  | 3.003             |
| CUARTO TRIMESTRE/FOURTH QUARTER    | 41.032           | 10.109   | 51.141  | 9.777             |
| SEGUNDO SEMESTRE/SECOND SEMESTER   | 81.393           | 15.485   | 96.878  | 17.325            |
| TOTAL                              | 162.332          | 24.191   | 186.523 | 37.710            |

## FAENA POR ESTABLECIMIENTO - BOVINOS POR CATEGORÍA

SLAUGHTER BY ABATTOIR - BOVINE BY CLASS

DICIEMBRE / DECEMBER 2014

Cabezas / Heads

| ESTABLECIMIENTO / ABATTOIR           | BOVINOS / BOVINE |        |          |       |         |
|--------------------------------------|------------------|--------|----------|-------|---------|
|                                      | NOVILLOS         | VACAS  | TERNEROS | TOROS | TOTAL   |
|                                      | STEERS           | COWS   | CALVES   | BULLS |         |
| BREEDERS PACKERS URUGUAY S.A.        | 8.998            | 6.485  | 0        | 249   | 15.732  |
| FRIGORIFICO CANELONES S.A.           | 4.930            | 7.129  | 12       | 193   | 12.264  |
| FRIGORIFICO TACUAREMBO S.A.          | 6.616            | 5.223  | 7        | 235   | 12.081  |
| PULSA S.A.                           | 6.130            | 5.152  | 14       | 188   | 11.484  |
| FRIGORIFICO LAS PIEDRAS S.A.         | 6.693            | 4.222  | 1        | 100   | 11.016  |
| CLEDINOR S.A.                        | 5.672            | 4.276  | 1        | 75    | 10.024  |
| FRIGORIFICO SAN JACINTO-NIREA S.A.   | 4.907            | 4.746  | 3        | 92    | 9.748   |
| ESTABLECIMIENTOS COLONIA S.A.        | 5.534            | 4.049  | 2        | 76    | 9.661   |
| ONTILCOR S.A. (FRIG. MATADERO PANDO) | 5.026            | 4.507  | 41       | 34    | 9.608   |
| FRIGORIFICO MATADERO CARRASCO S.A.   | 3.783            | 5.026  | 23       | 118   | 8.950   |
| CHIADEL S.A.                         | 3.731            | 3.255  | 0        | 83    | 7.069   |
| COPAYAN S.A.                         | 1.706            | 4.960  | 42       | 97    | 6.805   |
| FRIGORIFICO CASABLANCA S.A.          | 1.982            | 4.526  | 18       | 53    | 6.579   |
| LORSINAL S.A.                        | 3.780            | 2.447  | 25       | 44    | 6.296   |
| BILACOR S.A.                         | 4.571            | 1.569  | 0        | 25    | 6.165   |
| ERSINAL S.A.                         | 3.783            | 1.581  | 269      | 148   | 5.781   |
| SIRSIL S.A.                          | 1.514            | 3.981  | 1        | 51    | 5.547   |
| INALER S.A.                          | 3.218            | 1.519  | 222      | 25    | 4.984   |
| ARDISTAR S.A.                        | 1.657            | 2.672  | 340      | 100   | 4.769   |
| RONDATEL S.A.                        | 1.269            | 2.149  | 4        | 26    | 3.448   |
| SUC. CARLOS SCHNECK S.A.             | 209              | 2.291  | 45       | 546   | 3.091   |
| ARROYAL SOCIEDAD ANONIMA             | 1.248            | 1.384  | 290      | 115   | 3.037   |
| OFERAN S.A.                          | 220              | 1.038  | 0        | 13    | 1.271   |
| FRIGOCERRO S.A.                      | 335              | 541    | 0        | 47    | 923     |
| MATADERO LOS OLIVOS SOC. COL.        | 302              | 481    | 45       | 41    | 869     |
| SIMPLIFY S.A.                        | 21               | 761    | 0        | 18    | 800     |
| FRIGORIFICO CUAREIM LTDA.            | 156              | 405    | 1        | 23    | 585     |
| CRAVEA LEMA MIRIAN ZULMA             | 208              | 145    | 192      | 1     | 546     |
| LA TABLADA S.R.L.                    | 88               | 348    | 29       | 0     | 465     |
| FRIGORIFICO MARTINEZ S.R.L.          | 128              | 272    | 20       | 7     | 427     |
| MATADERO MERCEDES LTDA.              | 81               | 301    | 0        | 0     | 382     |
| LUCHASOL S.A.                        | 48               | 285    | 36       | 1     | 370     |
| LINERIM S.A.                         | 137              | 179    | 0        | 10    | 326     |
| INTENDENCIA MUNICIPAL DE ARTIGAS     | 122              | 184    | 0        | 0     | 306     |
| SIDERCOL S.A.                        | 47               | 0      | 20       | 6     | 73      |
| Total                                | 88.850           | 88.089 | 1.703    | 2.840 | 181.482 |

## FAENA POR ESTABLECIMIENTO - BOVINOS POR CATEGORÍA

SLAUGHTER BY ABATTOIR - BOVINE BY CLASS

ENERO / DICIEMBRE - JANUARY / DECEMBER 2014

Cabezas / Heads

| ESTABLECIMIENTO / ABATTOIR           | BOVINOS / BOVINE |         |          |        | TOTAL     |
|--------------------------------------|------------------|---------|----------|--------|-----------|
|                                      | NOVILLOS         | VACAS   | TERNEROS | TOROS  |           |
|                                      | STEERS           | COWS    | CALVES   | BULLS  |           |
| BREEDERS PACKERS URUGUAY S.A.        | 92.977           | 63.993  | 56       | 1.467  | 158.493   |
| FRIGORIFICO TACUAREMBO S.A.          | 76.800           | 71.417  | 63       | 2.623  | 150.903   |
| FRIGORIFICO CANELONES S.A.           | 58.169           | 77.379  | 82       | 3.376  | 139.006   |
| FRIGORIFICO LAS PIEDRAS S.A.         | 97.575           | 37.235  | 29       | 744    | 135.583   |
| PULSA S.A.                           | 73.061           | 57.859  | 18       | 1.529  | 132.467   |
| FRIGORIFICO SAN JACINTO-NIREA S.A.   | 64.318           | 56.369  | 4        | 1.267  | 121.958   |
| FRIGORIFICO MATADERO CARRASCO S.A.   | 58.915           | 58.584  | 57       | 1.164  | 118.720   |
| CLEDINOR S.A.                        | 59.838           | 45.841  | 72       | 1.196  | 106.947   |
| ONTILCOR S.A. (FRIG. MATADERO PANDO) | 59.133           | 43.691  | 151      | 958    | 103.933   |
| ESTABLECIMIENTOS COLONIA S.A.        | 54.681           | 46.451  | 105      | 1.407  | 102.644   |
| INALER S.A.                          | 53.797           | 37.690  | 485      | 625    | 92.597    |
| COPAYAN S.A.                         | 19.865           | 54.498  | 146      | 709    | 75.218    |
| CHIADEL S.A.                         | 45.392           | 26.907  | 48       | 771    | 73.118    |
| BILACOR S.A.                         | 53.744           | 18.563  | 1        | 444    | 72.752    |
| ERSINAL S.A.                         | 45.918           | 23.007  | 1.431    | 1.187  | 71.543    |
| FRIGORIFICO CASABLANCA S.A.          | 22.046           | 45.863  | 858      | 541    | 69.308    |
| SIRSIL S.A.                          | 24.469           | 36.933  | 5        | 566    | 61.973    |
| LORSINAL S.A.                        | 43.768           | 17.282  | 430      | 303    | 61.783    |
| RONDATEL S.A.                        | 16.429           | 24.562  | 95       | 869    | 41.955    |
| SUC. CARLOS SCHNECK S.A.             | 6.994            | 27.098  | 751      | 6.086  | 40.929    |
| ARDISTAR S.A.                        | 15.865           | 21.144  | 2.990    | 810    | 40.809    |
| ARROYAL SOCIEDAD ANONIMA             | 11.195           | 17.121  | 2.775    | 1.068  | 32.159    |
| CRAVEA LEMA MIRIAN ZULMA             | 5.762            | 5.995   | 3.289    | 95     | 15.141    |
| FRIGOCERRO S.A.                      | 2.565            | 9.126   | 0        | 782    | 12.473    |
| SIMPLIFY S.A.                        | 354              | 11.139  | 37       | 203    | 11.733    |
| OFERAN S.A.                          | 1.837            | 9.260   | 2        | 114    | 11.213    |
| MATADERO LOS OLIVOS SOC. COL.        | 2.929            | 5.302   | 365      | 427    | 9.023     |
| FRIGORIFICO CUAREIM LTDA.            | 1.756            | 6.148   | 38       | 484    | 8.426     |
| LA TABLADA S.R.L.                    | 742              | 5.394   | 172      | 167    | 6.475     |
| FRIGORIFICO MARTINEZ S.R.L.          | 2.691            | 3.405   | 263      | 58     | 6.417     |
| LUCHASOL S.A.                        | 382              | 4.975   | 550      | 133    | 6.040     |
| MATADERO MERCEDES LTDA.              | 982              | 3.711   | 28       | 0      | 4.721     |
| LINERIM S.A.                         | 1.060            | 2.394   | 174      | 113    | 3.741     |
| INTENDENCIA MUNICIPAL DE ARTIGAS     | 1.059            | 2.305   | 0        | 4      | 3.368     |
| SIDERCOL S.A.                        | 76               | 23      | 20       | 7      | 126       |
| Total                                | 1.077.144        | 978.664 | 15.590   | 32.297 | 2.103.695 |

FAENA POR ESTABLECIMIENTO - OVINOS POR CATEGORÍA  
 SLAUGHTER BY ABATTOIR - SHEEP BY CLASS  
 DICIEMBRE / DECEMBER 2014

Cabezas / Heads

| ESTABLECIMIENTO / ABATTOIR         | OVINOS / SHEEP |                    |                     |                   |                  | TOTAL   |
|------------------------------------|----------------|--------------------|---------------------|-------------------|------------------|---------|
|                                    | OVEJAS<br>EWES | CAPONES<br>WETHERS | BORREGOS<br>HOGGETS | CORDEROS<br>LAMBS | CARNEROS<br>RAMS |         |
| FRIGORIFICO SAN JACINTO-NIREA S.A. | 3.335          | 738                | 1.490               | 26.092            | 146              | 31.801  |
| FRIGORIFICO LAS PIEDRAS S.A.       | 4.301          | 2.845              | 840                 | 20.974            | 9                | 28.969  |
| SOMICAR S.A.                       | 3.945          | 1.064              | 1.723               | 17.083            | 19               | 23.834  |
| CALTES S.A.                        | 4.730          | 4.233              | 2.312               | 6.717             | 71               | 18.063  |
| FRIGORIFICO MATADERO CARRASCO S.A. | 1.690          | 1.336              | 1.915               | 12.916            | 83               | 17.940  |
| CHIADEL S.A.                       | 994            | 219                | 1.042               | 12.278            | 16               | 14.549  |
| OFERAN S.A.                        | 2.519          | 1.787              | 3.149               | 6.623             | 95               | 14.173  |
| SIDERCOL S.A.                      | 1.239          | 901                | 1.446               | 6.906             | 14               | 10.506  |
| INTENDENCIA MUNICIPAL DE ARTIGAS   | 1.294          | 958                | 100                 | 6.508             | 0                | 8.860   |
| FRIGORIFICO CUAREIM LTDA.          | 318            | 20                 | 0                   | 7.174             | 0                | 7.512   |
| FRIGOCERRO S.A.                    | 1.878          | 364                | 550                 | 2.738             | 121              | 5.651   |
| RONDATEL S.A.                      | 0              | 24                 | 224                 | 4.505             | 0                | 4.753   |
| ARROYAL SOCIEDAD ANONIMA           | 173            | 43                 | 25                  | 3.548             | 0                | 3.789   |
| LA TABLADA S.R.L.                  | 705            | 194                | 11                  | 1.732             | 6                | 2.648   |
| FRIGORIFICO MARTINEZ S.R.L.        | 266            | 88                 | 0                   | 2.046             | 0                | 2.400   |
| LUCHASOL S.A.                      | 140            | 668                | 113                 | 1.075             | 218              | 2.214   |
| INALER S.A.                        | 331            | 18                 | 388                 | 1.430             | 0                | 2.167   |
| FRIGORIFICO CASABLANCA S.A.        | 0              | 0                  | 0                   | 1.336             | 0                | 1.336   |
| SIMPLIFY S.A.                      | 0              | 0                  | 0                   | 1.311             | 0                | 1.311   |
| MATADERO MERCEDES LTDA.            | 0              | 0                  | 0                   | 0                 | 0                | 0       |
| CLEDINOR S.A.                      | 0              | 0                  | 0                   | 0                 | 0                | 0       |
| LINERIM S.A.                       | 0              | 0                  | 0                   | 0                 | 0                | 0       |
| Total                              | 27.858         | 15.500             | 15.328              | 142.992           | 798              | 202.476 |

FAENA POR ESTABLECIMIENTO - OVINOS POR CATEGORÍA  
 SLAUGHTER BY ABATTOIR - SHEEP BY CLASS  
 ENERO / DICIEMBRE - JANUARY / DECEMBER 2014

Cabezas / Heads

| ESTABLECIMIENTO / <i>ABATTOIR</i>  | OVINOS / <i>SHEEP</i> |                |                |              |             | TOTAL     |
|------------------------------------|-----------------------|----------------|----------------|--------------|-------------|-----------|
|                                    | OVEJAS                | CAPONES        | BORREGOS       | CORDEROS     | CARNEROS    |           |
|                                    | <i>EWES</i>           | <i>WETHERS</i> | <i>HOGGETS</i> | <i>LAMBS</i> | <i>RAMS</i> |           |
| FRIGORIFICO SAN JACINTO-NIREA S.A. | 37.822                | 6.515          | 12.545         | 184.451      | 971         | 242.304   |
| FRIGORIFICO LAS PIEDRAS S.A.       | 49.689                | 26.242         | 8.126          | 127.962      | 506         | 212.525   |
| SOMICAR S.A.                       | 61.724                | 27.904         | 8.354          | 90.412       | 1.126       | 189.520   |
| FRIGOCERRO S.A.                    | 57.420                | 16.348         | 14.547         | 66.290       | 749         | 155.354   |
| CALTES S.A.                        | 49.276                | 15.112         | 16.817         | 72.438       | 518         | 154.161   |
| FRIGORIFICO MATADERO CARRASCO S.A. | 14.871                | 5.384          | 23.882         | 90.549       | 418         | 135.104   |
| OFERAN S.A.                        | 34.434                | 8.960          | 11.375         | 38.002       | 461         | 93.232    |
| SIDERCOL S.A.                      | 29.436                | 9.752          | 6.017          | 21.936       | 552         | 67.693    |
| CHIADEL S.A.                       | 8.714                 | 2.887          | 4.197          | 49.820       | 192         | 65.810    |
| INTENDENCIA MUNICIPAL DE ARTIGAS   | 16.641                | 7.127          | 1.300          | 20.112       | 61          | 45.241    |
| FRIGORIFICO CUAREIM LTDA.          | 4.472                 | 623            | 798            | 11.369       | 0           | 17.262    |
| INALER S.A.                        | 1.969                 | 1.022          | 939            | 12.400       | 11          | 16.341    |
| RONDATEL S.A.                      | 3.718                 | 206            | 788            | 6.468        | 15          | 11.195    |
| LA TABLADA S.R.L.                  | 4.422                 | 2.448          | 206            | 3.715        | 103         | 10.894    |
| ARROYAL SOCIEDAD ANONIMA           | 1.437                 | 570            | 298            | 6.967        | 13          | 9.285     |
| LUCHASOL S.A.                      | 2.225                 | 2.833          | 379            | 2.144        | 256         | 7.837     |
| FRIGORIFICO MARTINEZ S.R.L.        | 315                   | 314            | 38             | 4.266        | 15          | 4.948     |
| FRIGORIFICO CASABLANCA S.A.        | 27                    | 0              | 0              | 3.649        | 0           | 3.676     |
| SIMPLIFY S.A.                      | 0                     | 0              | 0              | 2.167        | 0           | 2.167     |
| LINERIM S.A.                       | 0                     | 0              | 0              | 38           | 0           | 38        |
| MATADERO MERCEDES LTDA.            | 0                     | 0              | 0              | 0            | 0           | 0         |
| CLEDINOR S.A.                      | 0                     | 0              | 0              | 0            | 0           | 0         |
| Total                              | 378.612               | 134.247        | 110.606        | 815.155      | 5.967       | 1.444.587 |

## FAENA POR ESTABLECIMIENTO - PORCINOS Y EQUINOS POR CATEGORÍA

SLAUGHTER BY ABATTOIR - SWINE AND HORSES BY CLASS

DICIEMBRE / DECEMBER 2014

Cabezas / Heads

| ESTABLECIMIENTO / ABATTOIR       | PORCINOS / SWINE |              |               | EQUINOS<br>HORSES |
|----------------------------------|------------------|--------------|---------------|-------------------|
|                                  | CERDOS           | LECHONES     | TOTAL         |                   |
|                                  | PIGS             | PIGLETS      |               |                   |
| MIRNABEL S.A.                    | 7.403            | 3.134        | 10.537        |                   |
| ARDISTAR S.A.                    | 5.561            | 250          | 5.811         |                   |
| ARROYAL SOCIEDAD ANONIMA         | 667              | 659          | 1.326         |                   |
| SIDERCOL S.A.                    | 802              | 261          | 1.063         |                   |
| MATADERO LOS OLIVOS SOC. COL.    | 192              | 173          | 365           |                   |
| INTENDENCIA MUNICIPAL DE ARTIGAS | 0                | 235          | 235           |                   |
| LUCHASOL S.A.                    | 57               | 100          | 157           |                   |
| LA TABLADA S.R.L.                | 0                | 98           | 98            |                   |
| SIMPLIFY S.A.                    | 0                | 0            | 0             |                   |
| SUC. CARLOS SCHNECK S.A.         | 0                | 0            | 0             |                   |
| RONDATEL S.A.                    | 0                | 0            | 0             |                   |
| MATADERO MERCEDES LTDA.          | 0                | 0            | 0             |                   |
| SAREL S.A.                       |                  |              |               | 1.102             |
| CLAY S.A.                        |                  |              |               | 1.012             |
| AGROINDUSTRIAL DEL ESTE S.A.     |                  |              |               | 889               |
| <b>Total</b>                     | <b>14.682</b>    | <b>4.910</b> | <b>19.592</b> | <b>3.003</b>      |

## FAENA POR ESTABLECIMIENTO - PORCINOS Y EQUINOS POR CATEGORÍA

SLAUGHTER BY ABATTOIR - SWINE AND HORSES BY CLASS

ENERO / DICIEMBRE - JANUARY / DECEMBER 2014

Cabezas / Heads

| ESTABLECIMIENTO / ABATTOIR       | PORCINOS / SWINE |               |                | EQUINOS<br>HORSES |
|----------------------------------|------------------|---------------|----------------|-------------------|
|                                  | CERDOS           | LECHONES      | TOTAL          |                   |
|                                  | PIGS             | PIGLETS       |                |                   |
| MIRNABEL S.A.                    | 74.692           | 11.795        | 86.487         |                   |
| ARDISTAR S.A.                    | 62.780           | 1.947         | 64.727         |                   |
| ARROYAL SOCIEDAD ANONIMA         | 6.132            | 7.801         | 13.933         |                   |
| RONDATEL S.A.                    | 8.562            | 1.176         | 9.738          |                   |
| SIDERCOL S.A.                    | 7.019            | 261           | 7.280          |                   |
| MATADERO LOS OLIVOS SOC. COL.    | 3.036            | 690           | 3.726          |                   |
| INTENDENCIA MUNICIPAL DE ARTIGAS | 41               | 249           | 290            |                   |
| LUCHASOL S.A.                    | 70               | 174           | 244            |                   |
| LA TABLADA S.R.L.                | 0                | 98            | 98             |                   |
| SIMPLIFY S.A.                    | 0                | 0             | 0              |                   |
| SUC. CARLOS SCHNECK S.A.         | 0                | 0             | 0              |                   |
| MATADERO MERCEDES LTDA.          | 0                | 0             | 0              |                   |
| AGROINDUSTRIAL DEL ESTE S.A.     |                  |               |                | 8.320             |
| CLAY S.A.                        |                  |               |                | 17.730            |
| SAREL S.A.                       |                  |               |                | 11.660            |
| <b>Total</b>                     | <b>162.332</b>   | <b>24.191</b> | <b>186.523</b> | <b>37.710</b>     |

## EXPORTACIONES TOTALES POR PRODUCTO

## TOTAL EXPORTS BY PRODUCT

Ene/Dic / Jan/Dec

2013 - 2014

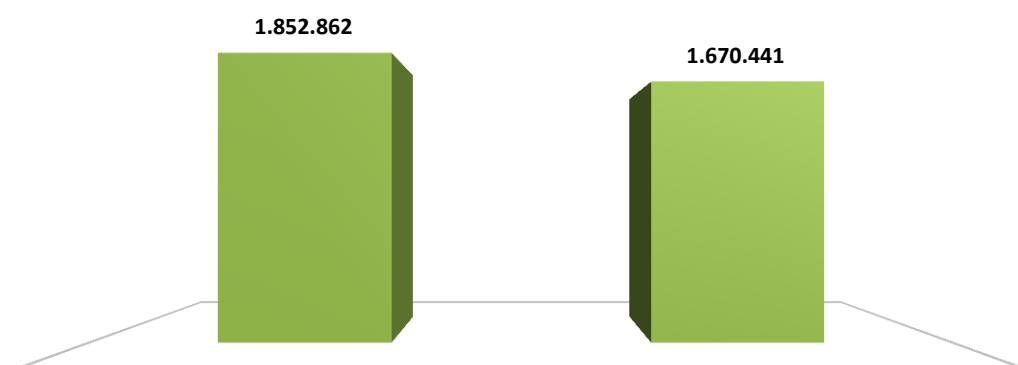
Toneladas peso embarque / Tons shipped weight

| PRODUCTO / PRODUCT                        | 2014              | 2013              | Variación Porcentual |            |
|---|-------------------|-------------------|----------------------|------------|
|   | Ene/Dic / Jan/Dec | Ene/Dic / Jan/Dec | Percent Change       |            |
| CARNE BOVINA                              | 249.260           | 241.854           | ↑                    | 3,1        |
| BEEF                                      |                   |                   |                      |            |
| CARNE OVINA                               | 17.283            | 18.934            | ↓                    | -8,7       |
| OVINE MEAT                                |                   |                   |                      |            |
| CARNE EQUINA                              | 5.648             | 4.678             | ↑                    | 20,7       |
| HORSE MEAT                                |                   |                   |                      |            |
| CARNE DE AVE                              | 14.746            | 11.682            | ↑                    | 26,2       |
| POULTRY MEAT                              |                   |                   |                      |            |
| CARNE DE ANIMALES DE CAZA MENOR           | 151               | 197               | ↓                    | -23,4      |
| SMALL GAME MEAT                           |                   |                   |                      |            |
| MENUDENCIAS                               | 28.949            | 26.636            | ↑                    | 8,7        |
| OFFALS                                    |                   |                   |                      |            |
| SUBPRODUCTO RESIDUAL COMESTIBLE           | 32.307            | 14.912            | ↑                    | 116,7      |
| REMAINING EDIBLE BYPRODUCT                |                   |                   |                      |            |
| SUBPRODUCTO PRIMARIO PARA USO INDUSTRIAL  | 49.156            | 50.634            | ↓                    | -2,9       |
| PRIMARY BYPRODUCT FOR INDUSTRIAL USE      |                   |                   |                      |            |
| SUBPRODUCTO INDUSTRIALIZADO               | 48.155            | 49.212            | ↓                    | -2,1       |
| INDUSTRIALIZED BYPRODUCT                  |                   |                   |                      |            |
| PRODUCTO CARNICO PARA ALIMENTACION ANIMAL | 1.253             | 564               | ↑                    | 122,2      |
| MEAT PRODUCT FOR ANIMAL FODDAGE           |                   |                   |                      |            |
| <b>TOTAL</b>                              | <b>446.909</b>    | <b>419.305</b>    | <b>↑</b>             | <b>6,6</b> |

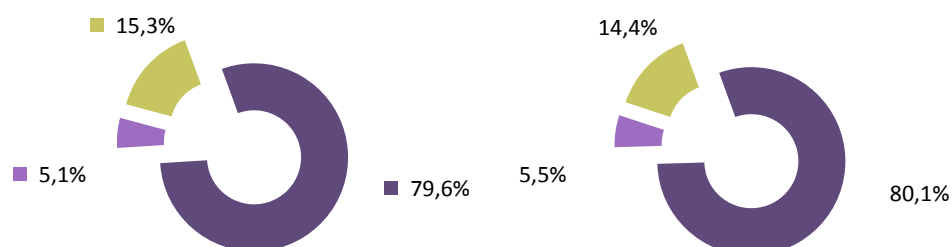
EXPORTACIONES TOTALES DEL SECTOR CARNICO  
 TOTAL MEAT EXPORTS  
 Ene/Dic / Jan/Dec

IMPORTE FOB Miles de dólares

| 2014              | 2013              |
|-------------------|-------------------|
| Ene/Dic / Jan/Dec | Ene/Dic / Jan/Dec |



| Ene/Dic / Jan/Dec | Ene/Dic / Jan/Dec |
|-------------------|-------------------|
| 2014              | 2013              |



|                          | Ene/Dic / Jan/Dec | Ene/Dic / Jan/Dec |
|--------------------------|-------------------|-------------------|
|                          | 2014              | 2013              |
| CARNE BOVINA / BEEF      | 1.474.247         | 1.338.034         |
| CARNE OVINA / OVINE MEAT | 95.378            | 91.949            |
| OTRAS CARNES / OTHERS    | 283.237           | 240.458           |
| TOTAL                    | 1.852.862         | 1.670.441         |

## EXPORTACIONES TOTALES DEL SECTOR CARNICO

## TOTAL MEAT EXPORTS

2013 - 2014

Importe FOB (Miles de dólares)

FOB Value (Thousand dollars)

| MES / MONTH                      | 2014      |            |         |           | 2013      |            |         |           |
|----------------------------------|-----------|------------|---------|-----------|-----------|------------|---------|-----------|
|                                  | C. BOVINA | C. OVINA   | OTROS   | TOTAL     | C. BOVINA | C. OVINA   | OTROS   | TOTAL     |
|                                  | BEEF      | OVINE MEAT | OTHER   |           | BEEF      | OVINE MEAT | OTHER   |           |
| Enero/January                    | 87.595    | 9.609      | 24.164  | 121.368   | 100.034   | 4.763      | 16.275  | 121.072   |
| Febrero/February                 | 90.775    | 5.932      | 15.557  | 112.264   | 128.826   | 6.133      | 22.947  | 157.906   |
| Marzo/March                      | 145.001   | 8.453      | 24.563  | 178.017   | 152.225   | 5.709      | 25.753  | 183.687   |
| Primer trimestre/First quarter   | 323.371   | 23.994     | 64.285  | 411.649   | 381.085   | 16.604     | 64.976  | 462.665   |
| Abril/April                      | 126.836   | 8.025      | 19.772  | 154.633   | 118.091   | 6.064      | 21.765  | 145.920   |
| Mayo/May                         | 153.575   | 6.598      | 30.065  | 190.239   | 123.008   | 4.683      | 21.145  | 148.837   |
| Junio/June                       | 145.624   | 5.811      | 26.892  | 178.327   | 121.255   | 5.769      | 26.472  | 153.497   |
| Segundo trimestre/Second quarter | 426.035   | 20.435     | 76.729  | 523.198   | 362.355   | 16.516     | 69.383  | 448.253   |
| Primer semestre/First semester   | 749.405   | 44.428     | 141.014 | 934.848   | 743.440   | 33.120     | 134.359 | 910.919   |
| Julio/July                       | 128.815   | 5.182      | 27.486  | 161.483   | 99.491    | 6.251      | 15.859  | 121.602   |
| Agosto/August                    | 94.049    | 4.262      | 20.706  | 119.017   | 97.040    | 6.511      | 16.414  | 119.965   |
| Septiembre/September             | 124.146   | 8.902      | 27.393  | 160.441   | 87.371    | 9.402      | 18.782  | 115.556   |
| Tercer trimestre/Third quarter   | 347.010   | 18.346     | 75.585  | 440.941   | 283.902   | 22.164     | 51.056  | 357.122   |
| Octubre/October                  | 97.531    | 9.428      | 15.465  | 122.424   | 72.400    | 10.184     | 12.343  | 94.927    |
| Noviembre/November               | 137.254   | 12.666     | 25.955  | 175.875   | 119.769   | 15.262     | 20.029  | 155.060   |
| Diciembre/December               | 143.047   | 10.510     | 25.217  | 178.774   | 118.523   | 11.219     | 22.671  | 152.414   |
| Cuarto trimestre/Fourth quarter  | 377.833   | 32.604     | 66.637  | 477.074   | 310.692   | 36.665     | 55.043  | 402.400   |
| Segundo semestre/Second semester | 724.842   | 50.949     | 142.223 | 918.014   | 594.595   | 58.828     | 106.099 | 759.522   |
| TOTAL                            | 1.474.247 | 95.378     | 283.237 | 1.852.862 | 1.338.034 | 91.949     | 240.458 | 1.670.441 |

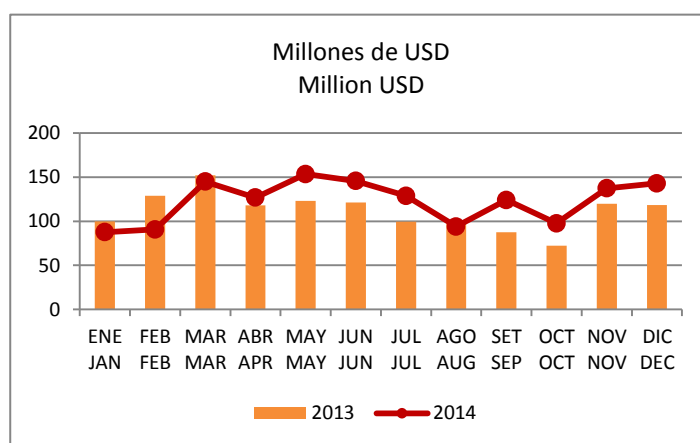
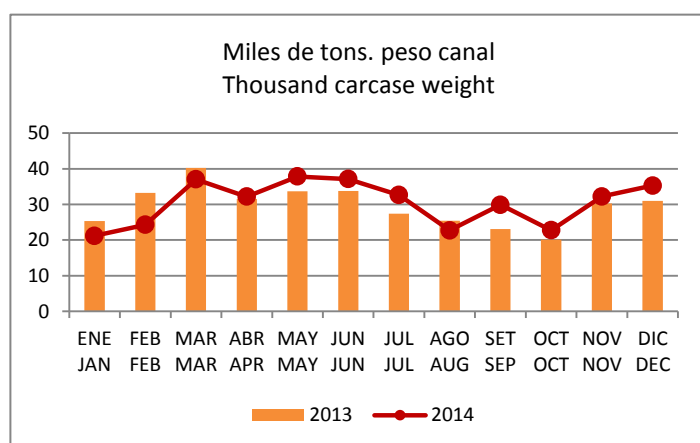
## EXPORTACIONES DE CARNE BOVINA

## BEEF EXPORTS

2013 2014

Volumen (peso embarque, peso canal\*) Importe FOB e Ingreso Promedio\*\*  
Quantity (shipped weight, carcass weight\*) FOB value and Average Income\*\*

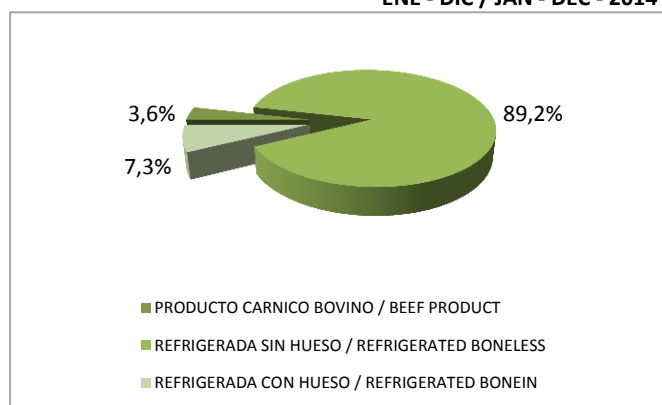
| MES / MONTH                      | 2014     |         |           |          | 2013     |         |           |          |
|----------------------------------|----------|---------|-----------|----------|----------|---------|-----------|----------|
|                                  | PESO     | PESO    | MILES     | USD/TON. | PESO     | PESO    | MILES     | USD/TON. |
|                                  | EMBARQUE | CANAL   | DE        | P.CANAL  | EMBARQUE | CANAL   | DE        | P.CANAL  |
|                                  | SHIPPED  | CARCASE | DÓLARES   | USD/TONS | SHIPPED  | CARCASE | DÓLARES   | USD/TONS |
|                                  | WEIGHT   | WEIGHT  | THOUSAND  | CARCASE  | WEIGHT   | WEIGHT  | THOUSAND  | CARCASE  |
| (TONS)                           | (TONS)   | USD     | WEIGHT    | (TONS)   | (TONS)   | USD     | WEIGHT    |          |
| Enero/January                    | 14.517   | 21.193  | 87.595    | 4.133    | 17.128   | 25.367  | 100.034   | 3.943    |
| Febrero/February                 | 16.485   | 24.281  | 90.775    | 3.739    | 22.633   | 33.211  | 128.826   | 3.879    |
| Marzo/March                      | 25.270   | 37.003  | 145.001   | 3.919    | 27.344   | 40.226  | 152.225   | 3.784    |
| Primer trimestre/First quarter   | 56.271   | 82.477  | 323.371   | 3.921    | 67.105   | 98.804  | 381.085   | 3.857    |
| Abril/April                      | 22.152   | 32.193  | 126.836   | 3.940    | 21.771   | 31.532  | 118.091   | 3.745    |
| Mayo/May                         | 25.954   | 37.828  | 153.575   | 4.060    | 22.876   | 33.705  | 123.008   | 3.650    |
| Junio/June                       | 25.732   | 37.123  | 145.624   | 3.923    | 22.865   | 33.778  | 121.255   | 3.590    |
| Segundo trimestre/Second quarter | 73.838   | 107.143 | 426.035   | 3.976    | 67.513   | 99.015  | 362.355   | 3.660    |
| Primer semestre/First semester   | 130.109  | 189.620 | 749.405   | 3.952    | 134.618  | 197.819 | 743.440   | 3.758    |
| Julio/July                       | 22.360   | 32.632  | 128.815   | 3.947    | 18.704   | 27.436  | 99.491    | 3.626    |
| Agosto/August                    | 15.478   | 22.706  | 94.049    | 4.142    | 17.378   | 25.398  | 97.040    | 3.821    |
| Septiembre/September             | 20.332   | 29.889  | 124.146   | 4.154    | 16.057   | 23.128  | 87.371    | 3.778    |
| Tercer trimestre/Third quarter   | 58.170   | 85.227  | 347.010   | 4.072    | 52.140   | 75.961  | 283.902   | 3.737    |
| Octubre/October                  | 15.274   | 22.754  | 97.531    | 4.286    | 13.599   | 20.160  | 72.400    | 3.591    |
| Noviembre/November               | 21.824   | 32.215  | 137.254   | 4.261    | 20.653   | 30.219  | 119.769   | 3.963    |
| Diciembre/December               | 23.882   | 35.263  | 143.047   | 4.057    | 20.845   | 30.999  | 118.523   | 3.823    |
| Cuarto trimestre/Fourth quarter  | 60.981   | 90.231  | 377.833   | 4.187    | 55.096   | 81.377  | 310.692   | 3.818    |
| Segundo semestre/Second semester | 119.151  | 175.458 | 724.842   | 4.131    | 107.236  | 157.339 | 594.595   | 3.779    |
| TOTAL                            | 249.260  | 365.079 | 1.474.247 | 4.038    | 241.854  | 355.157 | 1.338.034 | 3.767    |



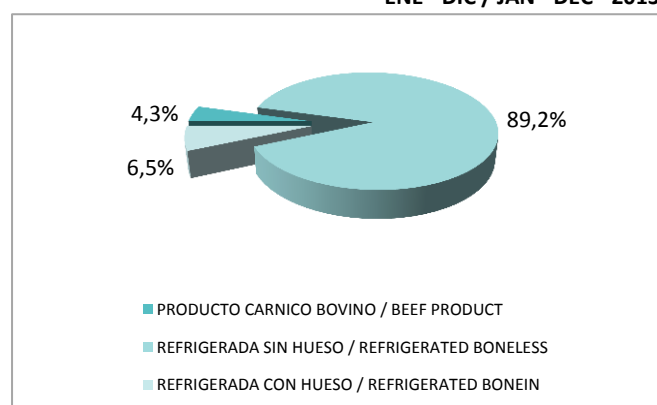
EXPORTACIONES DE CARNE BOVINA REFRIGERADA - PRODUCTO CÁRNICO BOVINO  
 REFRIGERATED AND BEEF PRODUCT EXPORTS  
 ENERO - DICIEMBRE/JANUARY - DECEMBER - 2013 - 2014

Tons. Peso Canal  
 Tons. Carcase weight

ENE - DIC / JAN - DEC - 2014



ENE - DIC / JAN - DEC - 2013



| CARNE BOVINA / BEEF                           | ENE - DIC / JAN - DEC - 2014 |               | ENE - DIC / JAN - DEC - 2013 |               |
|---|------------------------------|---------------|------------------------------|---------------|
| PRODUCTO CARNICO BOVINO / BEEF PRODUCT        | 12.999                       | 3,6%          | 15.331                       | 4,3%          |
| REFRIGERADA SIN HUESO / REFRIGERATED BONELESS | 325.579                      | 89,2%         | 316.742                      | 89,2%         |
| REFRIGERADA CON HUESO / REFRIGERATED BONEIN   | 26.501                       | 7,3%          | 23.084                       | 6,5%          |
| <b>TOTAL</b>                                  | <b>365.079</b>               | <b>100,0%</b> | <b>355.157</b>               | <b>100,0%</b> |

| CARNE BOVINA / BEEF                    | ENE - DIC / JAN - DEC - 2014 |               | ENE - DIC / JAN - DEC - 2013 |               |
|--|------------------------------|---------------|------------------------------|---------------|
|  | TONS. P. CANAL               | %             | TONS. P. CANAL               | %             |
| <b>CONGELADA / FROZEN</b>              |                              |               |                              |               |
| CON HUESO / BONEIN                     | 22.345                       | 7,54          | 19.269                       | 6,80          |
| SIN HUESO / BONELESS                   | 274.082                      | 92,46         | 264.283                      | 93,20         |
| <b>TOTAL CONGELADA / TOTAL FROZEN</b>  | <b>296.427</b>               | <b>100,00</b> | <b>283.552</b>               | <b>100,00</b> |
| <b>ENFRIADA / CHILLED</b>              |                              |               |                              |               |
| CON HUESO / BONEIN                     | 4.156                        | 7,47          | 3.815                        | 6,78          |
| SIN HUESO / BONELESS                   | 51.497                       | 92,53         | 52.459                       | 93,22         |
| <b>TOTAL ENFRIADA / TOTAL CHILLED</b>  | <b>55.653</b>                | <b>100,00</b> | <b>56.275</b>                | <b>100,00</b> |
| <b>REFRIGERADA / REFRIGERATED</b>      | <b>352.080</b>               | <b>96,44</b>  | <b>339.827</b>               | <b>95,68</b>  |
| PRODUCTO CARNICO BOVINO / BEEF PRODUCT | 12.999                       | 3,56          | 15.331                       | 4,32          |
| <b>TOTAL</b>                           | <b>365.079</b>               | <b>100,00</b> | <b>355.157</b>               | <b>100,00</b> |

## EXPORTACIONES DE CARNE BOVINA REFRIGERADA

## REFRIGERATED BEEF EXPORTS

2013 - 2014

Volumen (p.embarque, p.canal\*) Importe FOB e Ingreso Promedio\*\*  
 Quantity (shipped w., carcass w.\*) FOB value and Average Income\*\*

| MES / MONTH                      | 2014     |         |             |          | 2013     |         |             |          |
|----------------------------------|----------|---------|-------------|----------|----------|---------|-------------|----------|
|                                  | PESO     | PESO    | MILES       | USD/TON. | PESO     | PESO    | MILES       | USD/TON. |
|                                  | EMBARQUE | CANAL   | DE          | PESO     | EMBARQUE | CANAL   | DE          | PESO     |
|                                  | SHIPPED  | CARCASE | DÓLARES     | CANAL    | SHIPPED  | CARCASE | DÓLARES     | CANAL    |
|                                  | WEIGHT   | WEIGHT  | THOUSAND    | USD/TONS | WEIGHT   | WEIGHT  | THOUSAND    | USD/TONS |
| (TONS)                           | (TONS)   | USD     | CARC.WEIGHT | (TONS)   | (TONS)   | USD     | CARC.WEIGHT |          |
| Enero/January                    | 14.276   | 20.483  | 86.023      | 4.200    | 16.737   | 24.172  | 97.413      | 4.030    |
| Febrero/February                 | 16.206   | 23.429  | 88.835      | 3.792    | 22.410   | 32.418  | 126.727     | 3.909    |
| Marzo/March                      | 24.735   | 35.328  | 140.659     | 3.982    | 26.783   | 38.539  | 148.258     | 3.847    |
| Primer trimestre/First quarter   | 55.217   | 79.240  | 315.517     | 3.982    | 65.929   | 95.129  | 372.398     | 3.915    |
| Abril/April                      | 21.904   | 31.454  | 125.188     | 3.980    | 21.402   | 30.444  | 115.761     | 3.802    |
| Mayo/May                         | 25.476   | 36.396  | 149.802     | 4.116    | 22.350   | 31.998  | 119.141     | 3.723    |
| Junio/June                       | 25.322   | 35.801  | 142.466     | 3.979    | 22.347   | 32.122  | 117.259     | 3.650    |
| Segundo trimestre/Second quarter | 72.702   | 103.652 | 417.456     | 4.027    | 66.100   | 94.563  | 352.161     | 3.724    |
| Primer semestre/First semester   | 127.919  | 182.892 | 732.974     | 4.008    | 132.029  | 189.692 | 724.559     | 3.820    |
| Julio/July                       | 21.950   | 31.429  | 125.563     | 3.995    | 18.359   | 26.325  | 97.006      | 3.685    |
| Agosto/August                    | 15.150   | 21.682  | 91.381      | 4.215    | 16.976   | 24.156  | 93.458      | 3.869    |
| Septiembre/September             | 19.973   | 28.700  | 120.875     | 4.212    | 15.792   | 22.432  | 85.489      | 3.811    |
| Tercer trimestre/Third quarter   | 57.073   | 81.811  | 337.820     | 4.129    | 51.127   | 72.913  | 275.952     | 3.785    |
| Octubre/October                  | 15.000   | 21.873  | 94.778      | 4.333    | 13.203   | 18.871  | 69.214      | 3.668    |
| Noviembre/November               | 21.646   | 31.678  | 135.279     | 4.270    | 20.328   | 29.276  | 117.572     | 4.016    |
| Diciembre/December               | 23.429   | 33.827  | 138.860     | 4.105    | 20.246   | 29.074  | 113.355     | 3.899    |
| Cuarto trimestre/Fourth quarter  | 60.076   | 87.378  | 368.917     | 4.222    | 53.777   | 77.222  | 300.141     | 3.887    |
| Segundo semestre/Second semester | 117.149  | 169.188 | 706.737     | 4.177    | 104.904  | 150.135 | 576.093     | 3.837    |
| TOTAL                            | 245.068  | 352.080 | 1.439.710   | 4.089    | 236.933  | 339.827 | 1.300.652   | 3.827    |

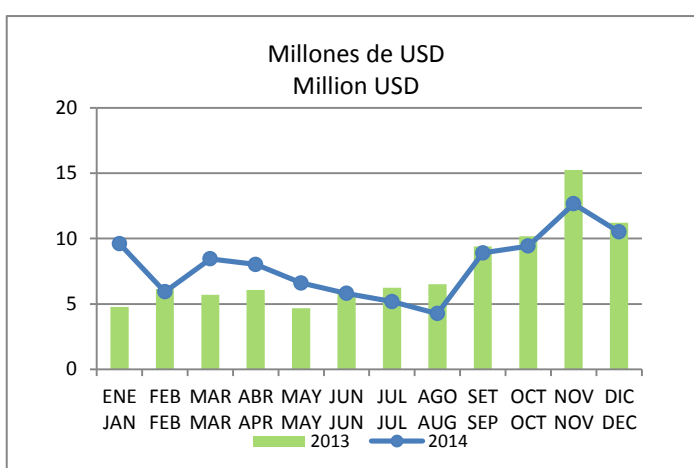
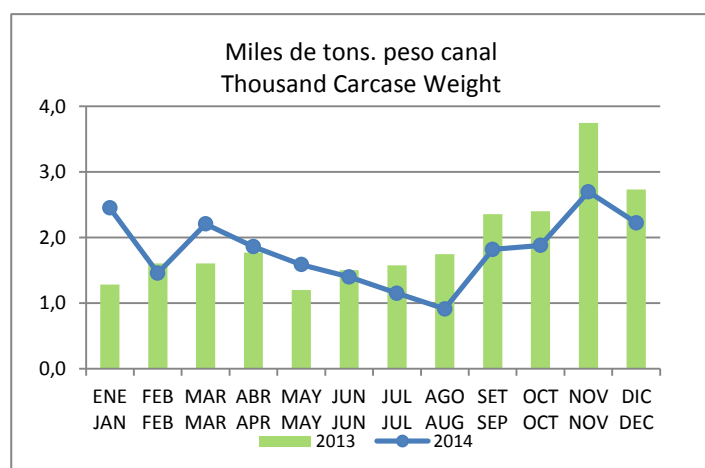
## EXPORTACIONES DE CARNE OVINA

## OVINE MEAT EXPORTS

2013 - 2014

Volumen (peso embarque, peso canal\*) Importe FOB e Ingreso Promedio\*\*  
 Quantity (shipped weight, carcass weight\*) FOB value and Average Income\*\*

| MES / MONTH                      | 2014     |         |          |          | 2013     |         |          |          |
|----------------------------------|----------|---------|----------|----------|----------|---------|----------|----------|
|                                  | PESO     | PESO    | MILES    | USD/TON. | PESO     | PESO    | MILES    | USD/TON. |
|                                  | EMBARQUE | CANAL   | DE       | P.CANAL  | EMBARQUE | CANAL   | DE       | P.CANAL  |
|                                  | SHIPPED  | CARCASE | DÓLARES  | USD/TONS | SHIPPED  | CARCASE | DÓLARES  | USD/TONS |
|                                  | WEIGHT   | WEIGHT  | THOUSAND | CARCASE  | WEIGHT   | WEIGHT  | THOUSAND | CARCASE  |
| (TONS)                           | (TONS)   | USD     | WEIGHT   | (TONS)   | (TONS)   | USD     | WEIGHT   |          |
| Enero/January                    | 1.869    | 2.452   | 9.609    | 3.919    | 1.062    | 1.284   | 4.763    | 3.708    |
| Febrero/February                 | 1.260    | 1.459   | 5.932    | 4.066    | 1.277    | 1.606   | 6.133    | 3.820    |
| Marzo/March                      | 1.723    | 2.207   | 8.453    | 3.831    | 1.310    | 1.605   | 5.709    | 3.558    |
| Primer trimestre/First quarter   | 4.852    | 6.118   | 23.994   | 3.922    | 3.648    | 4.495   | 16.604   | 3.694    |
| Abril/April                      | 1.500    | 1.861   | 8.025    | 4.313    | 1.371    | 1.774   | 6.064    | 3.419    |
| Mayo/May                         | 1.251    | 1.589   | 6.598    | 4.153    | 988      | 1.200   | 4.683    | 3.902    |
| Junio/June                       | 1.081    | 1.400   | 5.811    | 4.150    | 1.236    | 1.505   | 5.769    | 3.834    |
| Segundo trimestre/Second quarter | 3.831    | 4.850   | 20.435   | 4.213    | 3.595    | 4.478   | 16.516   | 3.688    |
| Primer semestre/First semester   | 8.683    | 10.967  | 44.428   | 4.051    | 7.243    | 8.973   | 33.120   | 3.691    |
| Julio/July                       | 926      | 1.151   | 5.182    | 4.503    | 1.377    | 1.578   | 6.251    | 3.960    |
| Agosto/August                    | 762      | 913     | 4.262    | 4.668    | 1.425    | 1.748   | 6.511    | 3.724    |
| Septiembre/September             | 1.465    | 1.821   | 8.902    | 4.888    | 1.819    | 2.356   | 9.402    | 3.991    |
| Tercer trimestre/Third quarter   | 3.152    | 3.885   | 18.346   | 4.722    | 4.622    | 5.683   | 22.164   | 3.900    |
| Octubre/October                  | 1.503    | 1.880   | 9.428    | 5.016    | 2.048    | 2.403   | 10.184   | 4.239    |
| Noviembre/November               | 2.094    | 2.699   | 12.666   | 4.693    | 2.813    | 3.749   | 15.262   | 4.071    |
| Diciembre/December               | 1.851    | 2.225   | 10.510   | 4.723    | 2.209    | 2.731   | 11.219   | 4.108    |
| Cuarto trimestre/Fourth quarter  | 5.448    | 6.804   | 32.604   | 4.792    | 7.069    | 8.882   | 36.665   | 4.128    |
| Segundo semestre/Second semester | 8.600    | 10.689  | 50.949   | 4.767    | 11.691   | 14.565  | 58.828   | 4.039    |
| TOTAL                            | 17.283   | 21.656  | 95.378   | 4.404    | 18.934   | 23.538  | 91.949   | 3.906    |



## EXPORTACIONES POR EXPORTADOR

## EXPORTS BY EXPORTER

2013 - 2014

Importe FOB (Miles de dólares)

FOB Value (Thousand dollars)

| EXPORTADOR/EXPORTER                      | 2014        |      |                   |      | 2013        |       |                   |      |
|--|-------------|------|-------------------|------|-------------|-------|-------------------|------|
|  | Dicie/Decem |      | Ene/Dic / Jan/Dec |      | Dicie/Decem |       | Ene/Dic / Jan/Dec |      |
|  | Importe     | %    | Importe           | %    | Importe     | %     | Importe           | %    |
| ESTABLECIMIENTOS COLONIA S.A.            | 8.342       | 4,67 | 155.329           | 8,38 | 5.838       | 3,83  | 93.795            | 5,61 |
| FRIGORIFICO TACUAREMBO S.A.              | 16.845      | 9,42 | 145.565           | 7,86 | 15.471      | 10,15 | 116.279           | 6,96 |
| BREEDERS & PACKERS URUGUAY S.A.          | 16.599      | 9,28 | 142.492           | 7,69 | 10.153      | 6,66  | 64.314            | 3,85 |
| PULSA S.A.                               | 16.283      | 9,11 | 139.228           | 7,51 | 10.952      | 7,19  | 134.980           | 8,08 |
| FRIGORIFICO LAS PIEDRAS S.A.             | 12.221      | 6,84 | 129.519           | 6,99 | 11.534      | 7,57  | 137.941           | 8,26 |
| FRIGORIFICO SAN JACINTO-NIREA S.A.       | 10.423      | 5,83 | 118.857           | 6,41 | 11.009      | 7,22  | 113.491           | 6,79 |
| FRIGORIFICO CANELONES S.A.               | 10.893      | 6,09 | 110.012           | 5,94 | 8.030       | 5,27  | 114.015           | 6,83 |
| FRIGORIFICO MATADERO CARRASCO S.A.       | 10.787      | 6,03 | 108.466           | 5,85 | 8.421       | 5,53  | 93.150            | 5,58 |
| CLEDINOR S.A.                            | 9.322       | 5,21 | 87.810            | 4,74 | 7.685       | 5,04  | 110.308           | 6,60 |
| ONTILCOR S.A. (FRIG. MATADERO PANDO)     | 5.383       | 3,01 | 72.931            | 3,94 | 4.718       | 3,10  | 71.703            | 4,29 |
| BILACOR S.A.                             | 6.606       | 3,69 | 69.526            | 3,75 | 5.463       | 3,58  | 68.533            | 4,10 |
| LORSINAL S.A.                            | 5.440       | 3,04 | 61.931            | 3,34 | 4.495       | 2,95  | 55.872            | 3,34 |
| CHIADEL S.A.                             | 4.017       | 2,25 | 58.121            | 3,14 | 4.170       | 2,74  | 56.321            | 3,37 |
| INALER S.A.                              | 7.805       | 4,37 | 52.418            | 2,83 | 14.451      | 9,48  | 104.457           | 6,25 |
| ERSINAL S.A.                             | 5.214       | 2,92 | 51.460            | 2,78 | 3.276       | 2,15  | 50.531            | 3,03 |
| SIRSIL S.A.                              | 3.875       | 2,17 | 44.187            | 2,38 | 2.789       | 1,83  | 36.503            | 2,19 |
| FRIGORIFICO CASABLANCA S.A.              | 5.338       | 2,99 | 38.438            | 2,07 | 2.441       | 1,60  | 29.965            | 1,79 |
| GRANJA TRES ARROYOS URUGUAY S.A.-        | 2.845       | 1,59 | 30.634            | 1,65 | 3.026       | 1,99  | 23.381            | 1,40 |
| CARDAMA S.A.                             | 1.174       | 0,66 | 25.479            | 1,38 | 2.165       | 1,42  | 29.452            | 1,76 |
| FRIGOCERRO S.A.                          | 1.588       | 0,89 | 19.327            | 1,04 | 2.676       | 1,76  | 19.371            | 1,16 |
| COMPAÑIA INTERNACIONAL DE ALIMENTOS S.A. | 2.429       | 1,36 | 18.093            | 0,98 |             |       | 13.379            | 0,80 |
| SUC. CARLOS SCHNECK S.A.                 | 2.340       | 1,31 | 16.189            | 0,87 | 1.315       | 0,86  | 8.359             | 0,50 |
| RONDATEL S.A.                            | 1.004       | 0,56 | 15.254            | 0,82 | 788         | 0,52  | 13.714            | 0,82 |
| CLAY S.A.                                | 820         | 0,46 | 13.229            | 0,71 | 1.391       | 0,91  | 11.431            | 0,68 |
| BAMIDAL S.A.                             | 1.975       | 1,10 | 12.628            | 0,68 | 418         | 0,27  | 7.499             | 0,45 |
| HENIL S.A.                               | 1.154       | 0,65 | 12.379            | 0,67 | 1.208       | 0,79  | 14.542            | 0,87 |
| SOMICAR S.A.                             | 940         | 0,53 | 11.895            | 0,64 | 548         | 0,36  | 6.125             | 0,37 |
| COPAYAN S.A.                             | 1.755       | 0,98 | 11.545            | 0,62 | 692         | 0,45  | 5.683             | 0,34 |
| BERDICK S.A.                             | 421         | 0,24 | 9.304             | 0,50 | 1.233       | 0,81  | 8.908             | 0,53 |
| BALDONY S.A.                             |             |      | 9.034             | 0,49 |             |       |                   |      |
| SAREL S.A.                               | 342         | 0,19 | 6.930             | 0,37 | 650         | 0,43  | 6.010             | 0,36 |
| LOMA BONITA S.A.                         |             |      | 4.836             | 0,26 |             |       | 3.832             | 0,23 |
| AGROINDUSTRIAL DEL ESTE S.A.             | 437         | 0,24 | 4.521             | 0,24 | 301         | 0,20  | 2.426             | 0,15 |
| SIDERCOL S.A.                            | 312         | 0,17 | 3.835             | 0,21 | 309         | 0,20  | 1.998             | 0,12 |
| EREL S.A.                                | 412         | 0,23 | 3.607             | 0,19 | 621         | 0,41  | 4.116             | 0,25 |
| ALIMENTOS ORGANICOS URUGUAYOS S.A.       | 211         | 0,12 | 3.516             | 0,19 | 107         | 0,07  | 1.215             | 0,07 |
| DESPRO S.A.                              | 183         | 0,10 | 3.306             | 0,18 | 219         | 0,14  | 2.190             | 0,13 |
| OFERAN S.A.                              | 220         | 0,12 | 3.277             | 0,18 | 130         | 0,09  | 4.457             | 0,27 |
| SAPOL S.A.                               | 451         | 0,25 | 3.038             | 0,16 | 1.280       | 0,84  | 6.335             | 0,38 |
| DRASVEL S.A.                             | 980         | 0,55 | 3.017             | 0,16 |             |       |                   |      |
| KROL S.A.                                |             |      | 2.811             | 0,15 | 243         | 0,16  | 2.436             | 0,15 |

## EXPORTACIONES POR EXPORTADOR

## EXPORTS BY EXPORTER

2013 - 2014

Importe FOB (Miles de dólares)

FOB Value (Thousand dollars)

| EXPORTADOR/EXPORTER                    | 2014        |        |                   |        | 2013        |        |                   |        |
|--|-------------|--------|-------------------|--------|-------------|--------|-------------------|--------|
|  | Dicie/Decem |        | Ene/Dic / Jan/Dec |        | Dicie/Decem |        | Ene/Dic / Jan/Dec |        |
|  | Importe     | %      | Importe           | %      | Importe     | %      | Importe           | %      |
| FEBANOR S.A.                           |             |        | 2.745             | 0,15   | 973         | 0,64   | 2.640             | 0,16   |
| PRADERA FELIZ S.A.                     |             |        | 2.435             | 0,13   | 304         | 0,20   | 608               | 0,04   |
| GRINSOL S.A.                           | 288         | 0,16   | 2.316             | 0,12   | 12          | 0,01   | 2.405             | 0,14   |
| UREXPORT S.A.                          | 218         | 0,12   | 2.272             | 0,12   | 218         | 0,14   | 2.219             | 0,13   |
| YARUS S.A.                             | 368         | 0,21   | 2.193             | 0,12   | 222         | 0,15   | 4.329             | 0,26   |
| LENCINA SOCIEDAD COLECTIVA             | 175         | 0,10   | 1.549             | 0,08   |             |        | 334               | 0,02   |
| PROBIOMONT S.A.                        |             |        | 1.042             | 0,06   | 47          | 0,03   | 686               | 0,04   |
| TECNOBLEN S.A.                         | 99          | 0,06   | 941               | 0,05   | 57          | 0,04   | 1.023             | 0,06   |
| COOP.AG. LTDA. DE PROD. Y COM. AVICOLA | 31          | 0,02   | 889               | 0,05   | 78          | 0,05   | 78                | (.)    |
| CVF LTDA                               | 195         | 0,11   | 686               | 0,04   | 150         | 0,10   | 450               | 0,03   |
| DAMAXTIR S.A.                          |             |        | 309               | 0,02   |             |        | 2.109             | 0,13   |
| USINEL S.A.                            |             |        | 256               | 0,01   |             |        | 258               | 0,02   |
| SYNTEX URUGUAYA S.A.                   |             |        | 238               | 0,01   |             |        | 1.045             | 0,06   |
| BARRACA RODO SRL                       |             |        | 228               | 0,01   | 39          | 0,03   | 240               | 0,01   |
| TRIPUY S.A.                            |             |        | 210               | 0,01   |             |        | 240               | 0,01   |
| CUAREIM DEL NORTE SRL                  |             |        | 170               | 0,01   | 59          | 0,04   | 713               | 0,04   |
| JORMAR LTDA                            | 15          | 0,01   | 166               | 0,01   | 36          | 0,02   | 215               | 0,01   |
| KARELOY S.A.                           |             |        | 135               | 0,01   |             |        | 83                | (.)    |
| VELTOMAR S.A.                          |             |        | 77                | (.)    |             |        | 38                | (.)    |
| CARNE ABERDEEN ANGUS DEL URUGUAY S.A.  |             |        | 34                | (.)    |             |        |                   |        |
| DRINAL S.A.                            |             |        |                   |        |             |        | 41                | (.)    |
| KIMAHI S.A.                            |             |        |                   |        |             |        | 902               | 0,05   |
| FADICAR S.A.                           |             |        |                   |        |             |        | 55                | (.)    |
| SOUTH AMERICA PROTEINS S.A.            |             |        |                   |        |             |        | 715               | 0,04   |
| TOTAL                                  | 178.774     | 100,00 | 1.852.862         | 100,00 | 152.414     | 100,00 | 1.670.441         | 100,00 |

## EXPORTACIONES POR PRODUCTO

## EXPORTS BY PRODUCT

2013 2014

Volumen (Toneladas peso embarque)

Quantity (Tons shipped weight)

| PRODUCTO/PRODUCT |   | 2014    |                      | 2013    |                      |
|------------------|---|---------|----------------------|---------|----------------------|
|                  |   | Dic/Dec | Ene/Dic /<br>Jan/Dec | Dic/Dec | Ene/Dic /<br>Jan/Dec |
| *                | CARNE BOVINA/BEEF   | 23.882  | 249.260              | 20.845  | 241.854              |
| **               | REFRIGERADA/REFRIGERATED  | 23.429  | 245.068              | 20.246  | 236.933              |
| ***              | CONGELADA/FROZEN  | 20.231  | 205.128              | 16.735  | 196.679              |
|                  | CUARTO O CORTE DEL DELANTERO CON HUESO                            | 2.090   | 18.543               | 1.399   | 11.634               |
|                  | BONEIN FOREQUARTER OR FOREQUARTER CUT                             |         |                      |         |                      |
|                  | CUARTO O CORTE DEL TRASERO CON HUESO                              | 57      | 872                  | 2       | 420                  |
|                  | BONEIN HINDQUARTER OR HINDQUARTER CUT                             |         |                      |         |                      |
|                  | OTRAS CARNES CON HUESO  | 93      | 1.971                | 210     | 1.156                |
|                  | OTHER BONEIN MEATS  |         |                      |         |                      |
|                  | CUARTO O CORTE DEL DELANTERO SIN HUESO                            | 8.305   | 75.959               | 6.626   | 73.143               |
|                  | BONELESS FOREQUARTER OR FOREQUARTER CUT                           |         |                      |         |                      |
|                  | CUARTO O CORTE DEL TRASERO SIN HUESO                              | 4.175   | 42.851               | 3.352   | 42.974               |
|                  | BONELESS HINDQUARTER OR HINDQUARTER CUT                           |         |                      |         |                      |
|                  | CANAL, MEDIA CANAL, CUARTO COMPENSADO, CUARTO COMBINADO SIN HUESO | 2.361   | 27.905               | 1.975   | 22.953               |
|                  | BONELESS CARCASE, SIDE, COMPENSATED QUARTERS, COMBINED QUARTERS   |         |                      |         |                      |
|                  | OTRAS CARNES SIN HUESO  | 317     | 3.739                | 301     | 3.982                |
|                  | OTHER BONELESS MEATS  |         |                      |         |                      |
|                  | CARNES CHICAS   | 2.833   | 32.874               | 2.570   | 34.828               |
|                  | GENERIC TRIMMINGS   |         |                      |         |                      |
| ***              | ENFRIADA/CHILLED  | 3.198   | 39.940               | 3.511   | 40.254               |
|                  | CUARTO O CORTE DEL DELANTERO CON HUESO                            | 234     | 2.268                | 254     | 2.633                |
|                  | BONEIN FOREQUARTER OR FOREQUARTER CUT                             |         |                      |         |                      |
|                  | CANAL, MEDIA CANAL, CUARTO COMPENSADO, CUARTO COMBINADO CON HUESO |         | 792                  |         |                      |
|                  | BONEIN CARCASE, SIDE, COMPENSATED QUARTERS, COMBINED QUARTERS     |         |                      |         |                      |
|                  | OTRAS CARNES CON HUESO  | 195     | 1.039                | 79      | 1.130                |
|                  | OTHER BONEIN MEATS  |         |                      |         |                      |
|                  | CUARTO O CORTE DEL DELANTERO SIN HUESO                            | 112     | 2.445                | 146     | 2.020                |
|                  | BONELESS FOREQUARTER OR FOREQUARTER CUT                           |         |                      |         |                      |
|                  | CUARTO O CORTE DEL TRASERO SIN HUESO                              | 1.227   | 16.128               | 1.290   | 16.418               |
|                  | BONELESS HINDQUARTER OR HINDQUARTER CUT                           |         |                      |         |                      |
|                  | CANAL, MEDIA CANAL, CUARTO COMPENSADO, CUARTO COMBINADO SIN HUESO | 1.429   | 17.253               | 1.742   | 18.044               |
|                  | BONELESS CARCASE, SIDE, COMPENSATED QUARTERS, COMBINED QUARTERS   |         |                      |         |                      |
|                  | OTRAS CARNES SIN HUESO  | 2       | 14                   | (.)     | 9                    |
|                  | OTHER BONELESS MEATS  |         |                      |         |                      |
| **               | PRODUCTO CARNICO BOVINO/BEEF PRODUCT                              | 453     | 4.193                | 599     | 4.922                |
| ***              | CONGELADO/FROZEN  | 68      | 328                  | 37      | 405                  |
|                  | CUARTO O CORTE DEL DELANTERO SIN HUESO                            | 68      | 122                  |         | 115                  |
|                  | BONELESS FOREQUARTER OR FOREQUARTER CUT                           |         |                      |         |                      |
|                  | CUARTO O CORTE DEL TRASERO SIN HUESO                              |         | 63                   |         | 12                   |
|                  | BONELESS HINDQUARTER OR HINDQUARTER CUT                           |         |                      |         |                      |
| ***              | CONSERVA/PRESERVE   | 300     | 3.007                | 422     | 3.429                |
|                  | GENERIC   | 300     | 3.007                | 422     | 3.429                |
|                  | GENERIC   |         |                      |         |                      |

## EXPORTACIONES POR PRODUCTO

## EXPORTS BY PRODUCT

2013 2014

Volumen (Toneladas peso embarque)

Quantity (Tons shipped weight)

| PRODUCTO/PRODUCT |   | 2014    |                      | 2013    |                      |
|------------------|---|---------|----------------------|---------|----------------------|
|                  |   | Dic/Dec | Ene/Dic /<br>Jan/Dec | Dic/Dec | Ene/Dic /<br>Jan/Dec |
| ***              | HUMEDAD CONTROLADA/CONTROLLED MOISTURE                  | 86      | 704                  | 118     | 803                  |
|                  | GENERIC   | 86      | 704                  | 118     | 803                  |
|                  | GENERIC   |         |                      |         |                      |
| *                | CARNE OVINA/OVINE MEAT                                  | 1.851   | 17.283               | 2.209   | 18.934               |
| **               | REFRIGERADA/REFRIGERATED                                | 1.851   | 17.283               | 2.209   | 18.934               |
| ***              | CONGELADA/FROZEN  | 1.627   | 15.626               | 1.967   | 16.240               |
|                  | CUARTO O CORTE DEL DELANTERO CON HUESO                  | 682     | 4.840                | 533     | 4.432                |
|                  | BONEIN FOREQUARTER OR FOREQUARTER CUT                   |         |                      |         |                      |
|                  | CUARTO O CORTE DEL TRASERO CON HUESO                    | 300     | 1.991                | 175     | 1.528                |
|                  | BONEIN HINDQUARTER OR HINDQUARTER CUT                   |         |                      |         |                      |
|                  | CANAL, MEDIA CANAL, CUARTO COMPENSADO, CUARTO COMBINADO | 211     | 3.747                | 548     | 5.072                |
|                  | BONEIN CARCASE, SIDE, COMPENSATED QUARTERS, COMBINED    |         |                      |         |                      |
|                  | OTRAS CARNES CON HUESO                                  | 158     | 1.681                | 311     | 1.690                |
|                  | OTHER BONEIN MEATS                                      |         |                      |         |                      |
|                  | CUARTO O CORTE DEL DELANTERO SIN HUESO                  | 7       | 59                   | 2       | 47                   |
|                  | BONELESS FOREQUARTER OR FOREQUARTER CUT                 |         |                      |         |                      |
|                  | CUARTO O CORTE DEL TRASERO SIN HUESO                    | 193     | 2.716                | 349     | 2.824                |
|                  | BONELESS HINDQUARTER OR HINDQUARTER CUT                 |         |                      |         |                      |
|                  | CANAL, MEDIA CANAL, CUARTO COMPENSADO, CUARTO COMBINADO | 2       | 10                   |         | 40                   |
|                  | BONELESS CARCASE, SIDE, COMPENSATED QUARTERS, COMBINED  |         |                      |         |                      |
|                  | CARNES CHICAS   | 75      | 566                  | 40      | 518                  |
|                  | GENERIC TRIMMINGS                                       |         |                      |         |                      |
| ***              | ENFRIADA/CHILLED  | 224     | 1.657                | 242     | 2.694                |
|                  | CUARTO O CORTE DEL TRASERO CON HUESO                    |         | (.)                  |         |                      |
|                  | BONEIN HINDQUARTER OR HINDQUARTER CUT                   |         |                      |         |                      |
|                  | CANAL, MEDIA CANAL, CUARTO COMPENSADO, CUARTO COMBINADO | 224     | 1.635                | 242     | 2.662                |
|                  | BONEIN CARCASE, SIDE, COMPENSATED QUARTERS, COMBINED    |         |                      |         |                      |
|                  | CUARTO O CORTE DEL TRASERO SIN HUESO                    |         | 22                   |         | 32                   |
|                  | BONELESS HINDQUARTER OR HINDQUARTER CUT                 |         |                      |         |                      |
| *                | CARNE EQUINA/HORSE MEAT                                 | 369     | 5.648                | 472     | 4.678                |
| **               | REFRIGERADA/REFRIGERATED                                | 369     | 5.648                | 472     | 4.678                |
| ***              | CONGELADA/FROZEN  | 207     | 3.831                | 286     | 3.054                |
|                  | CUARTO O CORTE DEL DELANTERO SIN HUESO                  | 141     | 2.898                | 126     | 2.254                |
|                  | BONELESS FOREQUARTER OR FOREQUARTER CUT                 |         |                      |         |                      |
|                  | CUARTO O CORTE DEL TRASERO SIN HUESO                    | 27      | 419                  | 76      | 202                  |
|                  | BONELESS HINDQUARTER OR HINDQUARTER CUT                 |         |                      |         |                      |
|                  | CANAL, MEDIA CANAL, CUARTO COMPENSADO, CUARTO COMBINADO | 38      | 356                  | 56      | 457                  |
|                  | BONELESS CARCASE, SIDE, COMPENSATED QUARTERS, COMBINED  |         |                      |         |                      |
| ***              | ENFRIADA/CHILLED  | 162     | 1.818                | 186     | 1.625                |
|                  | CUARTO O CORTE DEL TRASERO CON HUESO                    |         | 2                    |         |                      |
|                  | BONEIN HINDQUARTER OR HINDQUARTER CUT                   |         |                      |         |                      |
|                  | CUARTO O CORTE DEL TRASERO SIN HUESO                    | 6       | 46                   |         | 77                   |

## EXPORTACIONES POR PRODUCTO

## EXPORTS BY PRODUCT

2013 2014

Volumen (Toneladas peso embarque)

Quantity (Tons shipped weight)

| PRODUCTO/PRODUCT  | 2014    |                      | 2013    |                      |
|---|---------|----------------------|---------|----------------------|
|   | Dic/Dec | Ene/Dic /<br>Jan/Dec | Dic/Dec | Ene/Dic /<br>Jan/Dec |
| BONELESS HINDQUARTER OR HINDQUARTER CUT                 |         |                      |         |                      |
| CANAL, MEDIA CANAL, CUARTO COMPENSADO, CUARTO COMBINADO | 156     | 1.769                | 186     | 1.548                |
| BONELESS CARCASE, SIDE, COMPENSATED QUARTERS, COMBINED  |         |                      |         |                      |
| * CARNE DE AVE/POULTRY MEAT                             | 1.347   | 14.746               | 1.403   | 11.682               |
| ** REFRIGERADA/REFRIGERATED                             | 1.347   | 14.746               | 1.403   | 11.682               |
| *** CONGELADA/FROZEN                                    | 1.347   | 14.746               | 1.403   | 11.682               |
| CUARTO O CORTE DEL DELANTERO CON HUESO                  |         | 66                   |         | 91                   |
| BONEIN FOREQUARTER OR FOREQUARTER CUT                   |         |                      |         |                      |
| CANAL, MEDIA CANAL, CUARTO COMPENSADO, CUARTO COMBINADO | 1.320   | 14.479               | 1.395   | 11.355               |
| BONEIN CARCASE, SIDE, COMPENSATED QUARTERS, COMBINED    |         |                      |         |                      |
| CARNES CHICAS   | 27      | 168                  |         | 163                  |
| GENERIC TRIMMINGS                                       |         |                      |         |                      |
| * CARNE DE ANIMALES DE CAZA MENOR/SMALL GAME MEAT       |         | 151                  |         | 197                  |
| ** REFRIGERADA/REFRIGERATED                             |         | 151                  |         | 197                  |
| *** CONGELADA/FROZEN                                    |         | 151                  |         | 197                  |
| CANAL, MEDIA CANAL, CUARTO COMPENSADO, CUARTO COMBINADO |         | 127                  |         | 153                  |
| BONEIN CARCASE, SIDE, COMPENSATED QUARTERS, COMBINED    |         |                      |         |                      |
| CANAL, MEDIA CANAL, CUARTO COMPENSADO, CUARTO COMBINADO |         | 25                   |         | 44                   |
| BONELESS CARCASE, SIDE, COMPENSATED QUARTERS, COMBINED  |         |                      |         |                      |
| * MENUDENCIAS/OFFALS                                    | 2.965   | 28.949               | 2.486   | 26.636               |
| ** BOVINAS/BEEF   | 2.733   | 27.245               | 2.333   | 25.634               |
| *** CONGELADAS/FROZEN                                   | 2.733   | 27.241               | 2.333   | 25.610               |
| *** ENFRIADAS/CHILLED                                   |         | 2                    |         |                      |
| *** COCIDAS-CONGELADAS/COOKED-FROZEN                    |         | 2                    |         | 24                   |
| ** OVINAS/OVINE   | 123     | 896                  | 75      | 711                  |
| *** CONGELADAS/FROZEN                                   | 123     | 896                  | 75      | 711                  |
| ** EQUINAS/HORSE  | 68      | 624                  | 70      | 173                  |
| *** CONGELADAS/FROZEN                                   | 68      | 624                  | 70      | 173                  |
| *** ENFRIADAS/CHILLED                                   |         | (.)                  |         | (.)                  |
| ** PORCINAS/PORK  |         | 6                    |         | 9                    |
| *** CONGELADAS/FROZEN                                   |         | 6                    |         | 9                    |
| ** DE AVE/POULTRY                                       | 41      | 177                  | 8       | 110                  |
| *** CONGELADAS/FROZEN                                   | 41      | 177                  | 8       | 110                  |
| * SUBPRODUCTO RESIDUAL COMESTIBLE/REMAINING EDIBLE      | 2.917   | 32.307               | 1.843   | 14.912               |
| ** BOVINO/BEEF  | 2.699   | 30.380               | 1.642   | 12.585               |
| *** CONGELADO/FROZEN                                    | 2.699   | 30.380               | 1.642   | 12.585               |
| *** COCIDO-CONGELADO/COOKED-FROZEN                      |         |                      |         | (.)                  |
| ** OVINO/OVINE  | 98      | 990                  | 137     | 1.004                |
| *** CONGELADO/FROZEN                                    | 98      | 990                  | 137     | 1.004                |
| ** EQUINO/HORSE   | 53      | 62                   |         | 1                    |
| *** CONGELADO/FROZEN                                    | 53      | 62                   |         | 1                    |
| ** DE AVE/POULTRY                                       | 66      | 875                  | 64      | 1.322                |

## EXPORTACIONES POR PRODUCTO

## EXPORTS BY PRODUCT

2013 2014

Volumen (Toneladas peso embarque)

Quantity (Tons shipped weight)

| PRODUCTO/PRODUCT |  | 2014    |                      | 2013    |                      |
|------------------|--|---------|----------------------|---------|----------------------|
|                  |  | Dic/Dec | Ene/Dic /<br>Jan/Dec | Dic/Dec | Ene/Dic /<br>Jan/Dec |
| ***              | GENÉRICO/GENERIC                                       | 27      | 756                  | 54      | 767                  |
| ***              | CONGELADO/FROZEN                                       | 39      | 119                  | 10      | 555                  |
| *                | SUBPRODUCTO PRIMARIO PARA USO INDUSTRIAL/PRIMARY       | 4.519   | 49.156               | 3.448   | 50.634               |
| **               | GENÉRICO/GENERIC                                       | (.)     | 16                   |         |                      |
| ***              | GENÉRICO/GENERIC                                       | (.)     | 16                   |         |                      |
| **               | BOVINO/BEEF  | 4.446   | 48.513               | 3.335   | 49.834               |
| ***              | GENÉRICO/GENERIC                                       | 4.055   | 44.980               | 3.000   | 46.180               |
| ***              | CONGELADO/FROZEN                                       | 390     | 3.533                | 335     | 3.654                |
| **               | OVINO/OVINE  | 47      | 442                  | 97      | 658                  |
| ***              | GENÉRICO/GENERIC                                       | 47      | 442                  | 97      | 658                  |
| **               | EQUINO/HORSE   | 27      | 125                  | 16      | 122                  |
| ***              | GENÉRICO/GENERIC                                       | 27      | 125                  | 16      | 101                  |
| ***              | CONGELADO/FROZEN                                       |         |                      |         | 21                   |
| **               | DE CAZA MENOR/SMALL GAME                               |         | 60                   |         | 19                   |
| ***              | GENÉRICO/GENERIC                                       |         | 60                   |         | 19                   |
| *                | SUBPRODUCTO INDUSTRIALIZADO/INDUSTRIALIZED BYPRODUCT   | 4.838   | 48.155               | 3.904   | 49.212               |
| **               | GENÉRICO/GENERIC                                       | 4.496   | 43.498               | 3.330   | 44.346               |
| ***              | GENÉRICO/GENERIC                                       | 4.496   | 43.498               | 3.330   | 44.346               |
| **               | BOVINO/BEEF  | 302     | 4.363                | 490     | 4.312                |
| ***              | GENÉRICO/GENERIC                                       | 1       | 95                   | 16      | 108                  |
| ***              | HUMEDAD CONTROLADA/CONTROLLED MOISTURE                 | 302     | 4.269                | 474     | 4.204                |
| **               | OVINO/OVINE  | 27      | 175                  | 54      | 277                  |
| ***              | CONGELADO/FROZEN                                       | 25      | 133                  | 53      | 258                  |
| ***              | HUMEDAD CONTROLADA/CONTROLLED MOISTURE                 | 2       | 42                   | 2       | 19                   |
| **               | PORCINO/PORK   | 12      | 32                   |         | 109                  |
| ***              | HUMEDAD CONTROLADA/CONTROLLED MOISTURE                 | 12      | 32                   |         | 109                  |
| **               | DE AVE/POULTRY   |         | 27                   |         |                      |
| ***              | CONGELADO/FROZEN                                       |         | 27                   |         |                      |
| *                | PRODUCTO CARNICO PARA ALIMENTACION ANIMAL/MEAT PRODUCT | 69      | 1.253                | 45      | 564                  |
| **               | GENÉRICO/GENERIC                                       | 69      | 1.253                | 45      | 564                  |
| ***              | GENÉRICO/GENERIC                                       | 69      | 1.253                | 45      | 530                  |
| ***              | CONGELADO/FROZEN                                       |         |                      |         | 35                   |
|                  | TOTAL  | 42.756  | 446.909              | 36.655  | 419.305              |

## EXPORTACIONES TOTALES DEL SECTOR CÁRNICO - POR DESTINO

## TOTAL MEAT EXPORTS - BY DESTINATION

2013 - 2014

Importe FOB (Miles de dólares)

FOB Value (Thousand dollars)

| DESTINO/DESTINATION   | 2014    |                      | 2013    |                      |
|---|---------|----------------------|---------|----------------------|
|   | Dic/Dec | Ene/Dic /<br>Jan/Dec | Dic/Dec | Ene/Dic /<br>Jan/Dec |
| AFGANISTÁN/AFGHANISTAN  | 24      | 217                  |         | 240                  |
| CARNE DE AVE / POULTRY MEAT   | 24      | 217                  |         | 240                  |
| ALBANIA/ALBANIA   |         | 119                  |         | 20                   |
| CARNE BOVINA / BEEF   |         |                      |         | 20                   |
| SUBPRODUCTO INDUSTRIALIZADO / INDUSTRIALIZED BYPRODUCT                          |         | 119                  |         |                      |
| ALEMANIA/GERMANY  | 7.105   | 117.796              | 9.377   | 97.544               |
| CARNE BOVINA / BEEF   | 6.069   | 105.481              | 7.585   | 83.331               |
| CARNE OVINA / OVINE MEAT  | 194     | 4.785                | 810     | 4.975                |
| CARNE DE ANIMALES DE CAZA MENOR / SMALL GAME MEAT                               |         | 83                   |         | 308                  |
| MENUDENCIAS / OFFALS  |         |                      |         | 83                   |
| SUBPRODUCTO PRIMARIO PARA USO INDUSTRIAL / PRIMARY BYPRODUCT FOR INDUSTRIAL USE | 197     | 1.744                | 215     | 1.898                |
| SUBPRODUCTO INDUSTRIALIZADO / INDUSTRIALIZED BYPRODUCT                          | 645     | 5.702                | 767     | 6.949                |
| ANGOLA/ANGOLA   |         | 670                  |         | 873                  |
| CARNE BOVINA / BEEF   |         | 270                  |         | 628                  |
| CARNE DE AVE / POULTRY MEAT   |         | 359                  |         | 146                  |
| MENUDENCIAS / OFFALS  |         | 41                   |         | 100                  |
| ARGELIA/ALGERIA   |         | 599                  | 90      | 90                   |
| CARNE BOVINA / BEEF   |         | 27                   |         |                      |
| CARNE OVINA / OVINE MEAT  |         | 376                  | 90      | 90                   |
| SUBPRODUCTO RESIDUAL COMESTIBLE / REMAINING EDIBLE BYPRODUCT                    |         | 196                  |         |                      |
| ARGENTINA/ARGENTINA   | 391     | 5.468                | 611     | 7.588                |
| SUBPRODUCTO PRIMARIO PARA USO INDUSTRIAL / PRIMARY BYPRODUCT FOR INDUSTRIAL USE |         | 141                  |         | 571                  |
| SUBPRODUCTO INDUSTRIALIZADO / INDUSTRIALIZED BYPRODUCT                          | 391     | 5.326                | 611     | 7.017                |
| BAHAMAS/BAHAMAS   |         |                      |         | 95                   |
| MENUDENCIAS / OFFALS  |         |                      |         | 95                   |
| BARBADOS/BARBADOS   | 226     | 3.310                | 430     | 2.743                |
| CARNE BOVINA / BEEF   | 226     | 3.310                | 430     | 2.743                |
| BENÍN/BENIN   |         | 65                   |         |                      |
| CARNE DE AVE / POULTRY MEAT   |         | 65                   |         |                      |
| BERMUDAS/BERMUDA  |         |                      |         | 51                   |
| MENUDENCIAS / OFFALS  |         |                      |         | 51                   |
| BIELORRUSIA/BELARUS   | 71      | 692                  | 258     | 665                  |
| CARNE BOVINA / BEEF   |         | 65                   |         |                      |
| CARNE EQUINA / HORSE MEAT   | 71      | 210                  | 71      | 153                  |
| MENUDENCIAS / OFFALS  |         |                      |         | 8                    |
| SUBPRODUCTO INDUSTRIALIZADO / INDUSTRIALIZED BYPRODUCT                          |         | 417                  | 187     | 504                  |
| BOSNIA Y HERZEGOVINA/BOSNIA AND HERZEGOVINA                                     |         |                      |         | 261                  |
| CARNE BOVINA / BEEF   |         |                      |         | 261                  |
| BRASIL/BRAZIL   | 16.389  | 141.935              | 11.179  | 120.026              |
| CARNE BOVINA / BEEF   | 8.333   | 84.494               | 6.255   | 75.197               |
| CARNE OVINA / OVINE MEAT  | 7.677   | 52.154               | 4.769   | 41.739               |
| MENUDENCIAS / OFFALS  | 123     | 231                  | 5       | 421                  |
| SUBPRODUCTO RESIDUAL COMESTIBLE / REMAINING EDIBLE BYPRODUCT                    |         | 44                   |         | 65                   |

## EXPORTACIONES TOTALES DEL SECTOR CÁRNICO - POR DESTINO

## TOTAL MEAT EXPORTS - BY DESTINATION

2013 - 2014

Importe FOB (Miles de dólares)

FOB Value (Thousand dollars)

| DESTINO/DESTINATION   | 2014    |                      | 2013    |                      |
|---|---------|----------------------|---------|----------------------|
|   | Dic/Dec | Ene/Dic /<br>Jan/Dec | Dic/Dec | Ene/Dic /<br>Jan/Dec |
| SUBPRODUCTO PRIMARIO PARA USO INDUSTRIAL / PRIMARY BYPRODUCT FOR INDUSTRIAL USE |         | 3.026                |         | 1.389                |
| SUBPRODUCTO INDUSTRIALIZADO / INDUSTRIALIZED BYPRODUCT                          | 255     | 1.985                | 150     | 1.216                |
| BÉLGICA/BELGIUM   | 500     | 7.244                | 2.571   | 7.255                |
| CARNE BOVINA / BEEF   |         | 1.037                |         | 616                  |
| CARNE OVINA / OVINE MEAT  |         | 209                  |         | 457                  |
| CARNE EQUINA / HORSE MEAT   | 488     | 4.875                | 338     | 3.867                |
| CARNE DE ANIMALES DE CAZA MENOR / SMALL GAME MEAT                               |         | 949                  |         |                      |
| SUBPRODUCTO PRIMARIO PARA USO INDUSTRIAL / PRIMARY BYPRODUCT FOR INDUSTRIAL USE | 12      | 173                  | 2.233   | 2.315                |
| CANADÁ/CANADA   | 20.249  | 108.507              | 7.057   | 42.984               |
| CARNE BOVINA / BEEF   | 20.052  | 107.374              | 6.878   | 41.765               |
| CARNE OVINA / OVINE MEAT  | 197     | 1.133                | 179     | 1.219                |
| CHILE/CHILE   | 2.313   | 37.834               | 4.492   | 68.235               |
| CARNE BOVINA / BEEF   | 2.313   | 37.565               | 4.492   | 68.147               |
| SUBPRODUCTO PRIMARIO PARA USO INDUSTRIAL / PRIMARY BYPRODUCT FOR INDUSTRIAL USE |         | 103                  |         | 50                   |
| SUBPRODUCTO INDUSTRIALIZADO / INDUSTRIALIZED BYPRODUCT                          |         | 89                   |         |                      |
| PRODUCTO CÁRNICO PARA ALIMENTACION ANIMAL / MEAT PRODUCT FOR ANIMAL FODDAGE     |         | 77                   |         | 38                   |
| CHIPRE/CYPRUS   |         |                      |         | 512                  |
| CARNE BOVINA / BEEF   |         |                      |         | 512                  |
| COLOMBIA/COLOMBIA   | 139     | 2.918                | 234     | 3.213                |
| CARNE BOVINA / BEEF   | 12      | 591                  | 60      | 535                  |
| SUBPRODUCTO INDUSTRIALIZADO / INDUSTRIALIZED BYPRODUCT                          | 127     | 2.328                | 173     | 2.678                |
| COREA DEL SUR/KOREA, REPUBLIC OF  | 590     | 3.130                | 107     | 1.552                |
| CARNE BOVINA / BEEF   | 590     | 3.117                | 107     | 1.505                |
| MENUDENCIAS / OFFALS  |         | 13                   |         | 47                   |
| CROACIA/CROATIA   |         |                      |         | 651                  |
| CARNE BOVINA / BEEF   |         |                      |         | 651                  |
| CUBA/CUBA   |         |                      |         | 25                   |
| CARNE BOVINA / BEEF   |         |                      |         | 25                   |
| DINAMARCA/DENMARK   | 123     | 3.103                | 148     | 2.533                |
| CARNE BOVINA / BEEF   | 123     | 2.987                | 148     | 2.421                |
| CARNE OVINA / OVINE MEAT  |         | 116                  |         | 109                  |
| CARNE EQUINA / HORSE MEAT   |         |                      |         | 3                    |
| ECUADOR/ECUADOR   | 220     | 1.017                | 74      | 882                  |
| CARNE BOVINA / BEEF   | 187     | 789                  | 48      | 679                  |
| CARNE OVINA / OVINE MEAT  | 33      | 190                  | 23      | 189                  |
| MENUDENCIAS / OFFALS  |         | 9                    | 4       | 14                   |
| SUBPRODUCTO RESIDUAL COMESTIBLE / REMAINING EDIBLE BYPRODUCT                    |         | 30                   |         |                      |
| EGIPTO/EGYPT  |         | 227                  | 50      | 349                  |
| SUBPRODUCTO INDUSTRIALIZADO / INDUSTRIALIZED BYPRODUCT                          |         | 227                  | 50      | 349                  |
| EMIRATOS ÁRABES UNIDOS/UNITED ARAB EMIRATES                                     | 64      | 499                  |         | 425                  |
| CARNE BOVINA / BEEF   |         | 35                   |         | 57                   |
| CARNE OVINA / OVINE MEAT  |         | 390                  |         | 167                  |

## EXPORTACIONES TOTALES DEL SECTOR CÁRNICO - POR DESTINO

## TOTAL MEAT EXPORTS - BY DESTINATION

2013 - 2014

Importe FOB (Miles de dólares)

FOB Value (Thousand dollars)

| DESTINO/DESTINATION   | 2014    |                      | 2013    |                      |
|---|---------|----------------------|---------|----------------------|
|   | Dic/Dec | Ene/Dic /<br>Jan/Dec | Dic/Dec | Ene/Dic /<br>Jan/Dec |
| CARNE DE AVE / POULTRY MEAT   | 64      | 64                   |         | 186                  |
| MENUDENCIAS / OFFALS  |         |                      |         | 8                    |
| SUBPRODUCTO RESIDUAL COMESTIBLE / REMAINING EDIBLE BYPRODUCT                    |         | 10                   |         | 6                    |
| ESPAÑA/SPAIN  | 2.436   | 25.694               | 2.283   | 25.240               |
| CARNE BOVINA / BEEF   | 2.225   | 24.236               | 2.275   | 23.849               |
| CARNE OVINA / OVINE MEAT  |         | 163                  | 7       | 18                   |
| MENUDENCIAS / OFFALS  | 103     | 337                  |         | 709                  |
| SUBPRODUCTO INDUSTRIALIZADO / INDUSTRIALIZED BYPRODUCT                          | 108     | 956                  |         | 663                  |
| ESTADOS UNIDOS/UNITED STATES  | 27.377  | 218.762              | 15.993  | 166.626              |
| CARNE BOVINA / BEEF   | 27.166  | 213.856              | 15.768  | 164.893              |
| CARNE OVINA / OVINE MEAT  |         | 602                  |         |                      |
| SUBPRODUCTO PRIMARIO PARA USO INDUSTRIAL / PRIMARY BYPRODUCT FOR INDUSTRIAL USE |         | 102                  |         | 101                  |
| SUBPRODUCTO INDUSTRIALIZADO / INDUSTRIALIZED BYPRODUCT                          |         | 687                  | 118     | 463                  |
| PRODUCTO CARNICO PARA ALIMENTACION ANIMAL / MEAT PRODUCT FOR ANIMAL FODDAGE     | 211     | 3.516                | 107     | 1.169                |
| FEDERACION RUSA/RUSSIAN FEDERATION  | 4.337   | 139.571              | 5.302   | 147.031              |
| CARNE BOVINA / BEEF   | 1.962   | 99.018               | 2.669   | 116.692              |
| CARNE OVINA / OVINE MEAT  | 179     | 1.594                | 95      | 1.730                |
| CARNE EQUINA / HORSE MEAT   | 317     | 10.493               | 788     | 5.982                |
| CARNE DE AVE / POULTRY MEAT   |         | 87                   |         | 44                   |
| MENUDENCIAS / OFFALS  | 1.572   | 21.520               | 1.237   | 16.517               |
| SUBPRODUCTO RESIDUAL COMESTIBLE / REMAINING EDIBLE BYPRODUCT                    | 307     | 2.579                | 46      | 748                  |
| SUBPRODUCTO INDUSTRIALIZADO / INDUSTRIALIZED BYPRODUCT                          |         | 4.280                | 467     | 5.318                |
| FINLANDIA/FINLAND   | 273     | 3.424                | 289     | 12.250               |
| CARNE BOVINA / BEEF   | 137     | 3.110                | 289     | 2.086                |
| CARNE OVINA / OVINE MEAT  | 136     | 315                  |         | 224                  |
| SUBPRODUCTO PRIMARIO PARA USO INDUSTRIAL / PRIMARY BYPRODUCT FOR INDUSTRIAL USE |         |                      |         | 9.939                |
| FRANCIA/FRANCE  | 1.210   | 14.184               | 1.338   | 14.842               |
| CARNE BOVINA / BEEF   | 706     | 5.100                | 207     | 5.421                |
| CARNE OVINA / OVINE MEAT  | 107     | 3.169                | 421     | 4.019                |
| CARNE EQUINA / HORSE MEAT   | 385     | 4.598                | 687     | 5.026                |
| CARNE DE ANIMALES DE CAZA MENOR / SMALL GAME MEAT                               |         | 125                  |         |                      |
| MENUDENCIAS / OFFALS  |         |                      |         | (.)                  |
| SUBPRODUCTO PRIMARIO PARA USO INDUSTRIAL / PRIMARY BYPRODUCT FOR INDUSTRIAL USE | 12      | 158                  | 23      | 147                  |
| SUBPRODUCTO INDUSTRIALIZADO / INDUSTRIALIZED BYPRODUCT                          |         | 1.034                |         | 229                  |
| GABÓN/GABON   |         | 172                  |         | 68                   |
| CARNE OVINA / OVINE MEAT  |         | 172                  |         |                      |
| MENUDENCIAS / OFFALS  |         |                      |         | 68                   |
| GEORGIA/GEORGIA   |         | 414                  |         | 24                   |
| CARNE BOVINA / BEEF   |         | 411                  |         | 24                   |
| MENUDENCIAS / OFFALS  |         | 3                    |         |                      |
| GHANA/GHANA   |         |                      | 23      | 94                   |

## EXPORTACIONES TOTALES DEL SECTOR CÁRNICO - POR DESTINO

## TOTAL MEAT EXPORTS - BY DESTINATION

2013 - 2014

Importe FOB (Miles de dólares)

FOB Value (Thousand dollars)

| DESTINO/DESTINATION   | 2014    |                      | 2013    |                      |
|---|---------|----------------------|---------|----------------------|
|   | Dic/Dec | Ene/Dic /<br>Jan/Dec | Dic/Dec | Ene/Dic /<br>Jan/Dec |
| CARNE DE AVE / POULTRY MEAT   |         |                      | 23      | 23                   |
| MENUDENCIAS / OFFALS  |         |                      |         | 71                   |
| GUINEA ECUATORIAL/EQUATORIAL GUINEA   |         |                      |         | 111                  |
| CARNE OVINA / OVINE MEAT  |         |                      |         | 68                   |
| CARNE DE AVE / POULTRY MEAT   |         |                      |         | 42                   |
| HAITÍ/HAITI   |         |                      |         | 19                   |
| SUBPRODUCTO RESIDUAL COMESTIBLE / REMAINING EDIBLE BYPRODUCT                    |         |                      |         | 19                   |
| INDIA/INDIA   |         | 385                  |         |                      |
| SUBPRODUCTO PRIMARIO PARA USO INDUSTRIAL / PRIMARY BYPRODUCT FOR INDUSTRIAL USE |         | 385                  |         |                      |
| IRAQ/IRAQ   |         | 270                  |         |                      |
| CARNE OVINA / OVINE MEAT  |         | 270                  |         |                      |
| IRLANDA/IRELAND   |         |                      |         | 278                  |
| CARNE BOVINA / BEEF   |         |                      |         | 278                  |
| ISLA MADEIRA/MADEIRA ISLAND   | 88      | 1.525                | 249     | 1.450                |
| CARNE BOVINA / BEEF   | 88      | 1.525                | 249     | 1.450                |
| ISLAS CANARIAS/CANARY ISLANDS   | 2.178   | 20.528               | 1.334   | 17.200               |
| CARNE BOVINA / BEEF   | 2.178   | 20.528               | 1.334   | 17.171               |
| MENUDENCIAS / OFFALS  |         |                      |         | 29                   |
| ISRAEL/ISRAEL   | 13.340  | 130.461              | 15.798  | 137.876              |
| CARNE BOVINA / BEEF   | 12.848  | 126.931              | 15.319  | 133.211              |
| CARNE OVINA / OVINE MEAT  | 28      | 28                   |         |                      |
| MENUDENCIAS / OFFALS  | 345     | 2.135                | 209     | 2.957                |
| SUBPRODUCTO RESIDUAL COMESTIBLE / REMAINING EDIBLE BYPRODUCT                    | 119     | 1.260                | 182     | 1.477                |
| SUBPRODUCTO INDUSTRIALIZADO / INDUSTRIALIZED BYPRODUCT                          |         | 107                  | 88      | 232                  |
| ITALIA/ITALY  | 3.110   | 51.482               | 5.165   | 55.924               |
| CARNE BOVINA / BEEF   | 2.573   | 35.801               | 4.679   | 49.257               |
| CARNE OVINA / OVINE MEAT  |         |                      |         | 192                  |
| CARNE EQUINA / HORSE MEAT   |         | 96                   |         | 271                  |
| MENUDENCIAS / OFFALS  |         | 91                   |         | 191                  |
| SUBPRODUCTO PRIMARIO PARA USO INDUSTRIAL / PRIMARY BYPRODUCT FOR INDUSTRIAL USE |         | 7.969                |         |                      |
| SUBPRODUCTO INDUSTRIALIZADO / INDUSTRIALIZED BYPRODUCT                          | 537     | 7.525                | 485     | 6.014                |
| JAPÓN/JAPAN   | 15      | 1.852                | 236     | 1.531                |
| CARNE BOVINA / BEEF   |         | 730                  |         | 236                  |
| CARNE EQUINA / HORSE MEAT   |         | 1                    |         |                      |
| MENUDENCIAS / OFFALS  |         | 12                   |         | 99                   |
| SUBPRODUCTO RESIDUAL COMESTIBLE / REMAINING EDIBLE BYPRODUCT                    |         |                      |         | 2                    |
| SUBPRODUCTO PRIMARIO PARA USO INDUSTRIAL / PRIMARY BYPRODUCT FOR INDUSTRIAL USE | 15      | 34                   |         | 26                   |
| SUBPRODUCTO INDUSTRIALIZADO / INDUSTRIALIZED BYPRODUCT                          |         | 1.074                | 236     | 1.167                |
| JORDANIA/JORDAN   | 181     | 4.914                | 19      | 1.348                |
| CARNE BOVINA / BEEF   |         |                      |         | 161                  |
| CARNE OVINA / OVINE MEAT  | 181     | 4.885                |         | 864                  |
| MENUDENCIAS / OFFALS  |         | 28                   |         | 30                   |

## EXPORTACIONES TOTALES DEL SECTOR CÁRNICO - POR DESTINO

## TOTAL MEAT EXPORTS - BY DESTINATION

2013 - 2014

Importe FOB (Miles de dólares)

FOB Value (Thousand dollars)

| DESTINO/DESTINATION   | 2014    |                      | 2013    |                      |
|---|---------|----------------------|---------|----------------------|
|   | Dic/Dec | Ene/Dic /<br>Jan/Dec | Dic/Dec | Ene/Dic /<br>Jan/Dec |
| SUBPRODUCTO RESIDUAL COMESTIBLE / REMAINING EDIBLE BYPRODUCT                    |         |                      | 19      | 294                  |
| KAZAJISTÁN/KAZAKHSTAN   |         | 1.695                | 422     | 3.948                |
| CARNE BOVINA / BEEF   |         | 327                  | 216     | 1.519                |
| CARNE OVINA / OVINE MEAT  |         | 41                   |         | 70                   |
| CARNE EQUINA / HORSE MEAT   |         | 805                  | 149     | 2.213                |
| MENUDENCIAS / OFFALS  |         | 357                  |         |                      |
| SUBPRODUCTO RESIDUAL COMESTIBLE / REMAINING EDIBLE BYPRODUCT                    |         |                      |         | 36                   |
| SUBPRODUCTO INDUSTRIALIZADO / INDUSTRIALIZED BYPRODUCT                          |         | 165                  | 56      | 110                  |
| KUWAIT/KUWAIT   | 298     | 1.448                | 198     | 602                  |
| CARNE BOVINA / BEEF   | 298     | 1.298                | 198     | 550                  |
| CARNE OVINA / OVINE MEAT  |         | 151                  |         | 53                   |
| LETONIA/LATVIA  |         |                      |         | 43                   |
| CARNE EQUINA / HORSE MEAT   |         |                      |         | 43                   |
| LIBERIA/LIBERIA   |         |                      |         | 51                   |
| SUBPRODUCTO RESIDUAL COMESTIBLE / REMAINING EDIBLE BYPRODUCT                    |         |                      |         | 51                   |
| LIBIA/LIBYAN ARAB JAMAHIRIYA  |         |                      |         | 146                  |
| CARNE OVINA / OVINE MEAT  |         |                      |         | 146                  |
| LÍBANO/LEBANON  | 88      | 394                  | 214     | 1.367                |
| CARNE BOVINA / BEEF   |         | 27                   |         |                      |
| MENUDENCIAS / OFFALS  |         |                      |         | 8                    |
| SUBPRODUCTO RESIDUAL COMESTIBLE / REMAINING EDIBLE BYPRODUCT                    |         |                      |         | 156                  |
| SUBPRODUCTO INDUSTRIALIZADO / INDUSTRIALIZED BYPRODUCT                          | 88      | 368                  | 214     | 1.203                |
| MALASIA/MALAYSIA  |         |                      |         | 19                   |
| SUBPRODUCTO RESIDUAL COMESTIBLE / REMAINING EDIBLE BYPRODUCT                    |         |                      |         | 19                   |
| MALTA/MALTA   |         | 124                  |         |                      |
| CARNE BOVINA / BEEF   |         | 124                  |         |                      |
| MARRUECOS/MOROCCO   | 74      | 146                  |         | 121                  |
| SUBPRODUCTO INDUSTRIALIZADO / INDUSTRIALIZED BYPRODUCT                          | 74      | 146                  |         | 121                  |
| MÉXICO/MEXICO   | 2.662   | 13.070               | 94      | 658                  |
| CARNE BOVINA / BEEF   | 233     | 1.303                | 94      | 597                  |
| CARNE OVINA / OVINE MEAT  |         | 86                   |         | 62                   |
| SUBPRODUCTO PRIMARIO PARA USO INDUSTRIAL / PRIMARY BYPRODUCT FOR INDUSTRIAL USE | 2.429   | 11.680               |         |                      |
| NAMIBIA/NAMIBIA   |         |                      |         | 483                  |
| CARNE DE AVE / POULTRY MEAT   |         |                      |         | 364                  |
| MENUDENCIAS / OFFALS  |         |                      |         | 22                   |
| SUBPRODUCTO RESIDUAL COMESTIBLE / REMAINING EDIBLE BYPRODUCT                    |         |                      |         | 97                   |
| NIGERIA/NIGERIA   |         |                      |         | 3.932                |
| SUBPRODUCTO PRIMARIO PARA USO INDUSTRIAL / PRIMARY BYPRODUCT FOR INDUSTRIAL USE |         |                      |         | 3.932                |
| NORUEGA/NORWAY  | 334     | 10.916               | 521     | 8.456                |
| CARNE BOVINA / BEEF   | 334     | 10.344               | 345     | 8.033                |
| CARNE OVINA / OVINE MEAT  |         | 572                  | 176     | 423                  |

## EXPORTACIONES TOTALES DEL SECTOR CÁRNICO - POR DESTINO

## TOTAL MEAT EXPORTS - BY DESTINATION

2013 - 2014

Importe FOB (Miles de dólares)

FOB Value (Thousand dollars)

| DESTINO/DESTINATION  | 2014    |                      | 2013    |                      |
|--|---------|----------------------|---------|----------------------|
|  | Dic/Dec | Ene/Dic /<br>Jan/Dec | Dic/Dec | Ene/Dic /<br>Jan/Dec |
| NUEVA ZELANDA/NEW ZEALAND  |         | 113                  |         | 756                  |
| SUBPRODUCTO PRIMARIO PARA USO INDUSTRIAL / PRIMARY<br>BYPRODUCT FOR INDUSTRIAL USE |         | 35                   |         | 26                   |
| SUBPRODUCTO INDUSTRIALIZADO / INDUSTRIALIZED<br>BYPRODUCT                          |         | 78                   |         | 730                  |
| OMÁN/OMAN  | 43      | 306                  |         | 922                  |
| CARNE OVINA / OVINE MEAT   |         | 1                    |         |                      |
| CARNE DE AVE / POULTRY MEAT  | 43      | 305                  |         | 922                  |
| PAKISTÁN/PAKISTAN  |         | 210                  |         |                      |
| SUBPRODUCTO INDUSTRIALIZADO / INDUSTRIALIZED<br>BYPRODUCT                          |         | 210                  |         |                      |
| PARAGUAY/PARAGUAY  | 96      | 96                   |         | 47                   |
| CARNE BOVINA / BEEF  |         |                      |         | 6                    |
| SUBPRODUCTO RESIDUAL COMESTIBLE / REMAINING EDIBLE<br>BYPRODUCT                    | 96      | 96                   |         |                      |
| SUBPRODUCTO INDUSTRIALIZADO / INDUSTRIALIZED<br>BYPRODUCT                          |         |                      |         | 41                   |
| PAÍSES BAJOS/NETHERLANDS   | 10.851  | 150.069              | 10.842  | 113.896              |
| CARNE BOVINA / BEEF  | 10.667  | 141.020              | 10.486  | 106.657              |
| CARNE OVINA / OVINE MEAT   | 175     | 4.083                | 340     | 2.628                |
| CARNE DE ANIMALES DE CAZA MENOR / SMALL GAME MEAT                                  |         |                      |         | 974                  |
| SUBPRODUCTO PRIMARIO PARA USO INDUSTRIAL / PRIMARY<br>BYPRODUCT FOR INDUSTRIAL USE | 9       | 4.967                | 16      | 3.456                |
| SUBPRODUCTO INDUSTRIALIZADO / INDUSTRIALIZED<br>BYPRODUCT                          |         |                      |         | 160                  |
| PRODUCTO CÁRNICO PARA ALIMENTACION ANIMAL / MEAT<br>PRODUCT FOR ANIMAL FODDAGE     |         |                      |         | 21                   |
| PERÚ/PERU  | 575     | 3.965                | 373     | 3.789                |
| CARNE BOVINA / BEEF  | 184     | 1.981                | 206     | 1.995                |
| MENUDENCIAS / OFFALS   | 336     | 1.818                | 163     | 1.590                |
| SUBPRODUCTO RESIDUAL COMESTIBLE / REMAINING EDIBLE<br>BYPRODUCT                    | 55      | 165                  | 4       | 193                  |
| SUBPRODUCTO INDUSTRIALIZADO / INDUSTRIALIZED<br>BYPRODUCT                          |         | 1                    |         | 10                   |
| POLINESIA FRANCESA/FRENCH POLYNESIA  | 922     | 8.622                | 512     | 5.744                |
| CARNE BOVINA / BEEF  | 922     | 8.461                | 512     | 5.637                |
| CARNE OVINA / OVINE MEAT   |         | 161                  |         | 99                   |
| MENUDENCIAS / OFFALS   |         |                      |         | 8                    |
| POLONIA/POLAND   |         | 235                  | 39      | 171                  |
| CARNE BOVINA / BEEF  |         | 40                   |         |                      |
| MENUDENCIAS / OFFALS   |         | 31                   | 3       | 23                   |
| SUBPRODUCTO RESIDUAL COMESTIBLE / REMAINING EDIBLE<br>BYPRODUCT                    |         | 164                  | 36      | 149                  |
| PORTUGAL/PORTUGAL  |         | 5.313                | 467     | 3.944                |
| CARNE BOVINA / BEEF  |         | 5.313                | 467     | 3.944                |
| QATAR/QATAR  | 193     | 368                  | 152     | 550                  |
| CARNE BOVINA / BEEF  |         | 3                    | 152     | 152                  |
| CARNE DE AVE / POULTRY MEAT  | 193     | 364                  |         | 398                  |
| REINO UNIDO/UNITED KINGDOM   | 4.243   | 35.651               | 3.313   | 42.216               |
| CARNE BOVINA / BEEF  | 4.139   | 32.527               | 2.747   | 39.187               |
| CARNE OVINA / OVINE MEAT   | 103     | 2.904                | 566     | 3.029                |

## EXPORTACIONES TOTALES DEL SECTOR CÁRNICO - POR DESTINO

## TOTAL MEAT EXPORTS - BY DESTINATION

2013 - 2014

Importe FOB (Miles de dólares)

FOB Value (Thousand dollars)

| DESTINO/DESTINATION   | 2014    |                      | 2013    |                      |
|---|---------|----------------------|---------|----------------------|
|   | Dic/Dec | Ene/Dic /<br>Jan/Dec | Dic/Dec | Ene/Dic /<br>Jan/Dec |
| SUBPRODUCTO PRIMARIO PARA USO INDUSTRIAL / PRIMARY BYPRODUCT FOR INDUSTRIAL USE |         | 79                   |         |                      |
| SUBPRODUCTO INDUSTRIALIZADO / INDUSTRIALIZED BYPRODUCT                          |         | 141                  |         |                      |
| REPÚBLICA CHECA/CZECH REPUBLIC  |         | 251                  |         | 272                  |
| CARNE BOVINA / BEEF   |         | 251                  |         | 272                  |
| REPÚBLICA DEL CONGO/CONGO   | 230     | 1.353                | 75      | 1.001                |
| CARNE BOVINA / BEEF   |         | 142                  |         | 215                  |
| CARNE OVINA / OVINE MEAT  | 121     | 192                  |         | 111                  |
| CARNE DE AVE / POULTRY MEAT   | 65      | 907                  | 65      | 552                  |
| MENUDENCIAS / OFFALS  | 36      | 59                   | 4       | 9                    |
| SUBPRODUCTO RESIDUAL COMESTIBLE / REMAINING EDIBLE BYPRODUCT                    | 8       | 53                   | 6       | 114                  |
| REPÚBLICA DEMOCRÁTICA DEL CONGO/CONGO, THE DEMOCRATIC REPUBLIC OF THE           | 34      | 34                   |         |                      |
| CARNE DE AVE / POULTRY MEAT   | 18      | 18                   |         |                      |
| SUBPRODUCTO RESIDUAL COMESTIBLE / REMAINING EDIBLE BYPRODUCT                    | 16      | 16                   |         |                      |
| REPÚBLICA DOMINICANA/DOMINICAN REPUBLIC   |         |                      |         | 25                   |
| PRODUCTO CARNICO PARA ALIMENTACION ANIMAL / MEAT PRODUCT FOR ANIMAL FODDAGE     |         |                      |         | 25                   |
| REPÚBLICA POPULAR CHINA/CHINA   | 48.345  | 417.010              | 39.490  | 391.420              |
| CARNE BOVINA / BEEF   | 34.778  | 277.091              | 26.871  | 264.657              |
| CARNE OVINA / OVINE MEAT  | 1.206   | 14.913               | 3.678   | 27.985               |
| MENUDENCIAS / OFFALS  | 7.380   | 75.359               | 6.209   | 61.235               |
| SUBPRODUCTO RESIDUAL COMESTIBLE / REMAINING EDIBLE BYPRODUCT                    | 2.863   | 27.768               | 1.452   | 10.278               |
| SUBPRODUCTO PRIMARIO PARA USO INDUSTRIAL / PRIMARY BYPRODUCT FOR INDUSTRIAL USE | 56      | 4.927                |         | 10.105               |
| SUBPRODUCTO INDUSTRIALIZADO / INDUSTRIALIZED BYPRODUCT                          | 2.062   | 16.953               | 1.279   | 17.161               |
| SENEGAL/SENEGAL   |         | 113                  | 15      | 67                   |
| CARNE BOVINA / BEEF   |         | 113                  | 15      | 67                   |
| SEYCHELLES/SEYCHELLES   |         | 99                   |         | 75                   |
| CARNE OVINA / OVINE MEAT  |         | 99                   |         | 75                   |
| SINGAPUR/SINGAPORE  |         | 1.515                |         | 1.709                |
| CARNE BOVINA / BEEF   |         | 1.483                |         | 1.685                |
| MENUDENCIAS / OFFALS  |         | 31                   |         | 24                   |
| SUDÁFRICA/SOUTH AFRICA  |         | 3.515                | 656     | 11.967               |
| CARNE BOVINA / BEEF   |         | 2.604                | 599     | 4.503                |
| SUBPRODUCTO RESIDUAL COMESTIBLE / REMAINING EDIBLE BYPRODUCT                    |         | 879                  | 57      | 1.027                |
| SUBPRODUCTO PRIMARIO PARA USO INDUSTRIAL / PRIMARY BYPRODUCT FOR INDUSTRIAL USE |         | 32                   |         | 6.437                |
| SUECIA/SWEDEN   | 678     | 22.832               | 1.613   | 22.383               |
| CARNE BOVINA / BEEF   | 507     | 22.328               | 1.602   | 21.894               |
| CARNE OVINA / OVINE MEAT  | 172     | 505                  |         | 455                  |
| SUBPRODUCTO RESIDUAL COMESTIBLE / REMAINING EDIBLE BYPRODUCT                    |         |                      | 11      | 35                   |
| SUIZA/SWITZERLAND   | 591     | 26.310               | 1.811   | 30.558               |
| CARNE BOVINA / BEEF   | 527     | 25.211               | 1.769   | 29.730               |
| CARNE OVINA / OVINE MEAT  |         | 83                   |         | 145                  |

## EXPORTACIONES TOTALES DEL SECTOR CÁRNICO - POR DESTINO

## TOTAL MEAT EXPORTS - BY DESTINATION

2013 - 2014

Importe FOB (Miles de dólares)

FOB Value (Thousand dollars)

| DESTINO/DESTINATION   | 2014    |                      | 2013    |                      |
|---|---------|----------------------|---------|----------------------|
|   | Dic/Dec | Ene/Dic /<br>Jan/Dec | Dic/Dec | Ene/Dic /<br>Jan/Dec |
| CARNE EQUINA / HORSE MEAT   | 64      | 1.015                | 42      | 443                  |
| CARNE DE ANIMALES DE CAZA MENOR / SMALL GAME MEAT                               |         |                      |         | 123                  |
| SUBPRODUCTO RESIDUAL COMESTIBLE / REMAINING EDIBLE BYPRODUCT                    |         | 1                    |         |                      |
| SUBPRODUCTO PRIMARIO PARA USO INDUSTRIAL / PRIMARY BYPRODUCT FOR INDUSTRIAL USE |         |                      | (.)     | 116                  |
| TAILANDIA/THAILAND  | 102     | 739                  | 57      | 382                  |
| MENUDENCIAS / OFFALS  | 63      | 354                  |         | 225                  |
| SUBPRODUCTO RESIDUAL COMESTIBLE / REMAINING EDIBLE BYPRODUCT                    | 3       | 34                   |         |                      |
| SUBPRODUCTO PRIMARIO PARA USO INDUSTRIAL / PRIMARY BYPRODUCT FOR INDUSTRIAL USE | 36      | 352                  | 57      | 157                  |
| TOGO/TOGO   |         |                      |         | 10                   |
| SUBPRODUCTO RESIDUAL COMESTIBLE / REMAINING EDIBLE BYPRODUCT                    |         |                      |         | 10                   |
| TRINIDAD Y TOBAGO/TRINIDAD AND TOBAGO   | 517     | 10.446               | 855     | 8.231                |
| CARNE BOVINA / BEEF   | 517     | 10.446               | 855     | 8.227                |
| CARNE OVINA / OVINE MEAT  |         |                      |         | 4                    |
| TURQUÍA/TURKEY  | 357     | 880                  | 74      | 679                  |
| CARNE BOVINA / BEEF   | 286     | 555                  |         | 333                  |
| CARNE OVINA / OVINE MEAT  |         | 149                  |         | 21                   |
| MENUDENCIAS / OFFALS  | 71      | 176                  | 74      | 230                  |
| SUBPRODUCTO RESIDUAL COMESTIBLE / REMAINING EDIBLE BYPRODUCT                    |         |                      |         | 20                   |
| SUBPRODUCTO INDUSTRIALIZADO / INDUSTRIALIZED BYPRODUCT                          |         |                      |         | 74                   |
| TÚNEZ/TUNISIA   |         | 1.021                |         | 459                  |
| CARNE BOVINA / BEEF   |         | 134                  |         |                      |
| CARNE OVINA / OVINE MEAT  |         | 886                  |         | 459                  |
| UCRANIA/UKRAINE   |         |                      |         | 100                  |
| CARNE BOVINA / BEEF   |         |                      |         | 100                  |
| VENEZUELA/VENEZUELA   | 4.239   | 80.002               | 5.524   | 62.339               |
| CARNE BOVINA / BEEF   | 1.867   | 51.890               | 2.595   | 42.509               |
| CARNE DE AVE / POULTRY MEAT   | 2.372   | 28.111               | 2.929   | 19.830               |
| VIETNAM/VIET NAM  | 353     | 3.966                | 291     | 3.654                |
| CARNE BOVINA / BEEF   |         | 3                    |         | 3                    |
| CARNE EQUINA / HORSE MEAT   | 105     | 806                  | 17      | 963                  |
| MENUDENCIAS / OFFALS  | 72      | 1.088                | 52      | 260                  |
| SUBPRODUCTO RESIDUAL COMESTIBLE / REMAINING EDIBLE BYPRODUCT                    | 40      | 111                  |         | 10                   |
| SUBPRODUCTO INDUSTRIALIZADO / INDUSTRIALIZED BYPRODUCT                          | 135     | 1.957                | 222     | 2.420                |
| ZONA NEUTRAL PALESTINA/PALESTINIAN NEUTRAL ZONE                                 |         | 1.046                | 99      | 2.523                |
| CARNE BOVINA / BEEF   |         | 838                  |         | 1.741                |
| CARNE OVINA / OVINE MEAT  |         |                      | 63      | 124                  |
| MENUDENCIAS / OFFALS  |         | 207                  | 36      | 658                  |
| TOTAL   | 178.774 | 1.852.862            | 152.414 | 1.670.441            |