

Estadística Mensual

Faena - Exportación











INSTITUTO NACIONAL DE CARNES
NATIONAL MEAT INSTITUTE
Dirección de Información y Análisis Económico
Economic Analysis & Information Division

Rincón 545/549 - C.P. 11.000
Montevideo - Uruguay
Tels.: (598-2) 916 0430
(598-2) 916 1989
inacarnes@inac.gub.uy
diae@inac.gub.uy
www.inac.gub.uy

FAENA DE BOVINOS, OVINOS, PORCINOS Y EQUINOS
en establecimientos habilitados a nivel nacional

*BOVINE, SHEEP, SWINE AND HORSE SLAUGHTER
on licensed processing plants*

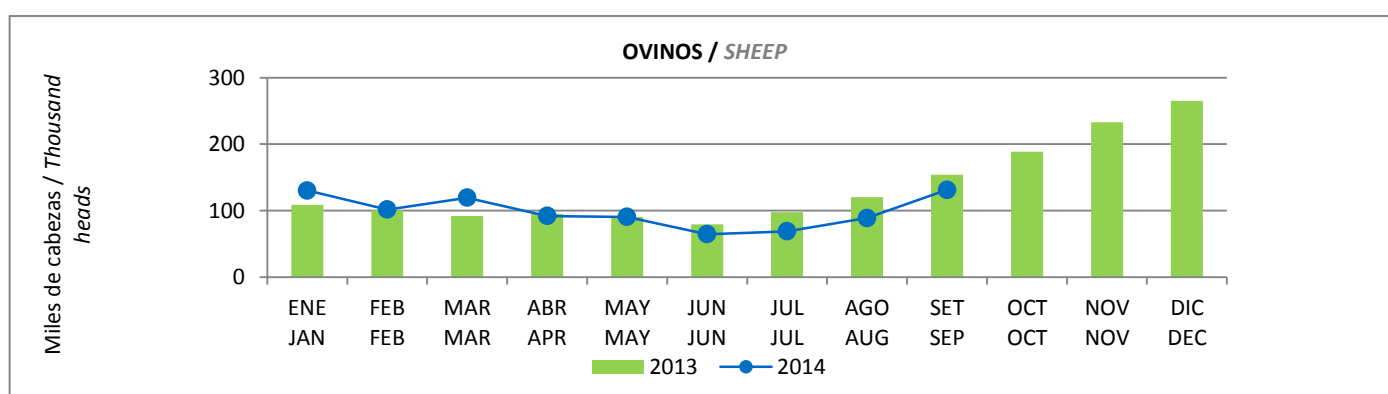
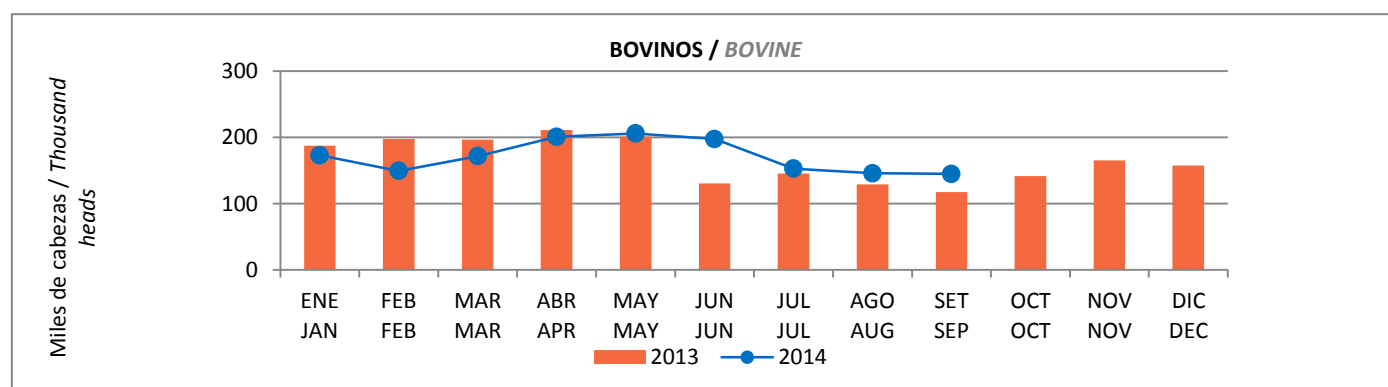
Cabezas
Heads

| ESPECIE | ENE / SET - JAN / SEP | ENE / SET - JAN / SEP | Variación Porcentual / <i>Percent Change</i> |
|---|-----------------------|-----------------------|---|
| | 2014 | 2013 | |
|  Bovinos / <i>Bovine</i> | 1.543.084 | 1.517.709 |  1,7 |
|  Ovinos / <i>Sheep</i> | 886.727 | 938.107 |  -5,5 |
|  Porcinos / <i>Swine</i> | 135.384 | 145.386 |  -6,9 |
|  Equinos / <i>Horses</i> | 27.933 | 20.204 |  38,3 |

FAENA POR ESPECIE
SLAUGHTER BY SPECIES
2013 - 2014

Cabezas / Heads

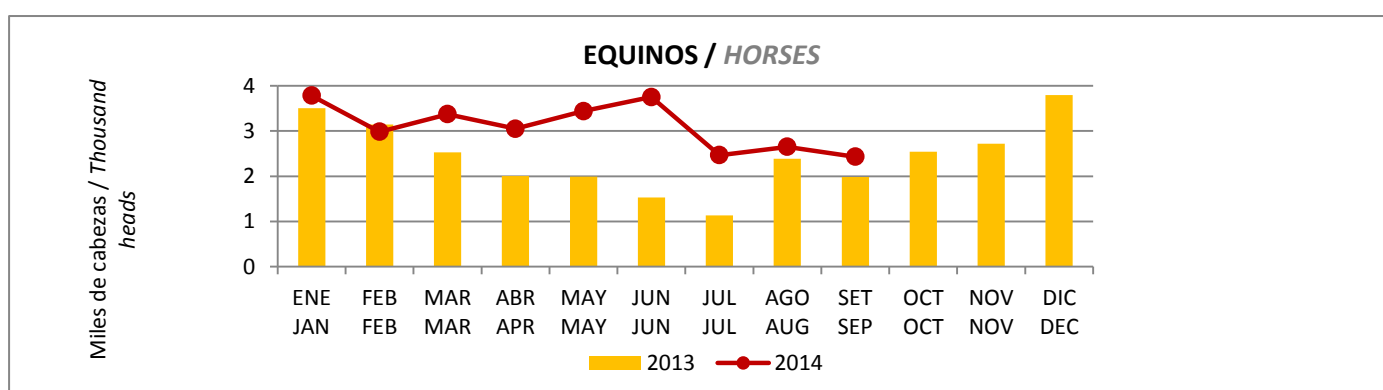
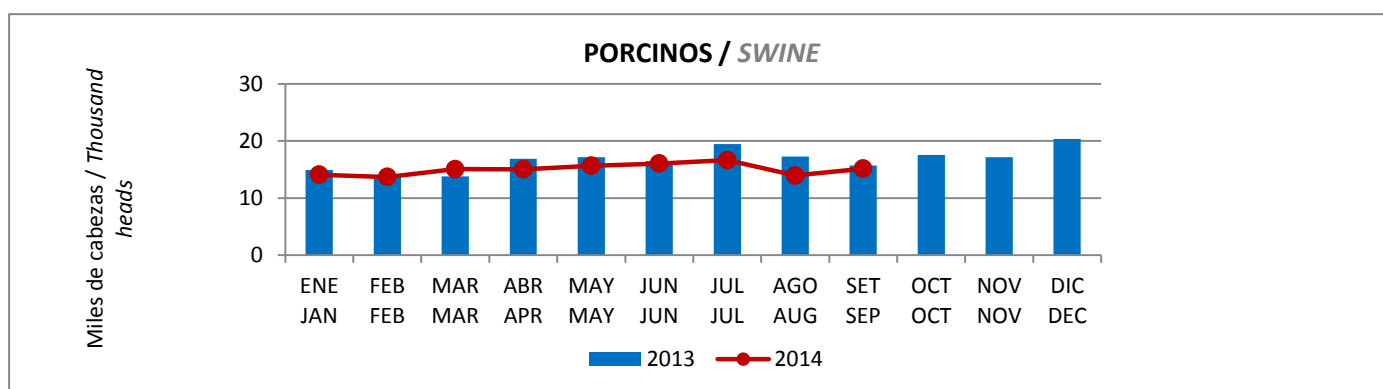
| MES / MONTH | BOVINOS | | % Variación | OVINOS | | % Variación |
|------------------------------------|-----------|-----------|-------------|---------|-----------|-------------|
| | BOVINE | | % Change | SHEEP | | % Change |
| | 2014 | 2013 | 2014 / 2013 | 2014 | 2013 | 2014 / 2013 |
| ENERO/JANUARY | 173.107 | 187.851 | ↓ -7,8 | 130.194 | 108.721 | ↑ 19,8 |
| FEBRERO/FEBRUARY | 149.501 | 197.737 | ↓ -24,4 | 101.656 | 100.370 | ↑ 1,3 |
| MARZO/MARCH | 171.875 | 196.702 | ↓ -12,6 | 119.283 | 92.025 | ↑ 29,6 |
| PRIMER TRIMESTRE / FIRST QUARTER | 494.483 | 582.290 | ↓ -15,1 | 351.133 | 301.116 | ↑ 16,6 |
| ABRIL/APRIL | 200.929 | 211.288 | ↓ -4,9 | 91.859 | 95.194 | ↓ -3,5 |
| MAYO/MAY | 206.022 | 201.168 | ↑ 2,4 | 90.585 | 90.537 | → 0,1 |
| JUNIO/JUNE | 197.648 | 130.661 | ↑ 51,3 | 64.353 | 79.346 | ↓ -18,9 |
| SEGUNDO TRIMESTRE / SECOND QUARTER | 604.599 | 543.117 | ↑ 11,3 | 246.797 | 265.077 | ↓ -6,9 |
| PRIMER SEMESTRE/FIRST SEMESTER | 1.099.082 | 1.125.407 | ↓ -2,3 | 597.930 | 566.193 | ↑ 5,6 |
| JULIO/JULY | 152.974 | 145.765 | ↑ 4,9 | 68.830 | 97.607 | ↓ -29,5 |
| AGOSTO/AUGUST | 146.013 | 129.048 | ↑ 13,1 | 88.784 | 120.390 | ↓ -26,3 |
| SETIEMBRE/SEPTEMBER | 145.015 | 117.489 | ↑ 23,4 | 131.183 | 153.917 | ↓ -14,8 |
| TERCER TRIMESTRE/THIRD QUARTER | 444.002 | 392.302 | ↑ 13,2 | 288.797 | 371.914 | ↓ -22,3 |
| OCTUBRE/OCTOBER | | 141.810 | | | 188.449 | |
| NOVIEMBRE/NOVEMBER | | 165.439 | | | 233.014 | |
| DICIEMBRE/DECEMBER | | 157.483 | | | 265.165 | |
| CUARTO TRIMESTRE/FOURTH QUARTER | | 464.732 | | | 686.628 | |
| SEGUNDO SEMESTRE/SECOND SEMESTER | | 857.034 | | | 1.058.542 | |
| TOTAL | 1.543.084 | 1.982.441 | | 886.727 | 1.624.735 | |



FAENA POR ESPECIE
SLAUGHTER BY SPECIES
2013 - 2014

Cabezas / Heads

| MES / MONTH | PORCINOS | | % Variación | | EQUINOS | | % Variación | |
|------------------------------------|----------|---------|-------------|-------|---------|--------|-------------|-------|
| | SWINE | | % Change | | HORSES | | % Change | |
| | 2014 | 2013 | 2014 / 2013 | | 2014 | 2013 | 2014 / 2013 | |
| ENERO/JANUARY | 14.106 | 14.914 | ↓ | -5,4 | 3.785 | 3.505 | ↑ | 8,0 |
| FEBRERO/FEBRUARY | 13.710 | 13.695 | → | 0,1 | 2.983 | 3.146 | ↓ | -5,2 |
| MARZO/MARCH | 15.078 | 13.782 | ↑ | 9,4 | 3.373 | 2.527 | ↑ | 33,5 |
| PRIMER TRIMESTRE / FIRST QUARTER | 42.894 | 42.391 | ↑ | 1,2 | 10.141 | 9.178 | ↑ | 10,5 |
| ABRIL/APRIL | 15.039 | 16.893 | ↓ | -11,0 | 3.051 | 2.003 | ↑ | 52,3 |
| MAYO/MAY | 15.652 | 17.182 | ↓ | -8,9 | 3.441 | 1.989 | ↑ | 73,0 |
| JUNIO/JUNE | 16.060 | 16.472 | ↓ | -2,5 | 3.752 | 1.531 | ↑ | 145,1 |
| SEGUNDO TRIMESTRE / SECOND QUARTER | 46.751 | 50.547 | ↓ | -7,5 | 10.244 | 5.523 | ↑ | 85,5 |
| PRIMER SEMESTRE/FIRST SEMESTER | 89.645 | 92.938 | ↓ | -3,5 | 20.385 | 14.701 | ↑ | 38,7 |
| JULIO/JULY | 16.646 | 19.465 | ↓ | -14,5 | 2.465 | 1.130 | ↑ | 118,1 |
| AGOSTO/AUGUST | 13.945 | 17.256 | ↓ | -19,2 | 2.652 | 2.390 | ↑ | 11,0 |
| SETIEMBRE/SEPTEMBER | 15.148 | 15.727 | ↓ | -3,7 | 2.431 | 1.983 | ↑ | 22,6 |
| TERCER TRIMESTRE/THIRD QUARTER | 45.739 | 52.448 | ↓ | -12,8 | 7.548 | 5.503 | ↑ | 37,2 |
| OCTUBRE/OCTOBER | | 17.534 | | | | 2.544 | | |
| NOVIEMBRE/NOVEMBER | | 17.169 | | | | 2.723 | | |
| DICIEMBRE/DECEMBER | | 20.340 | | | | 3.797 | | |
| CUARTO TRIMESTRE/FOURTH QUARTER | | 55.043 | | | | 9.064 | | |
| SEGUNDO SEMESTRE/SECOND SEMESTER | | 107.491 | | | | 14.567 | | |
| TOTAL | 135.384 | 200.429 | | | 27.933 | 29.268 | | |



FAENA POR CATEGORÍA - BOVINOS

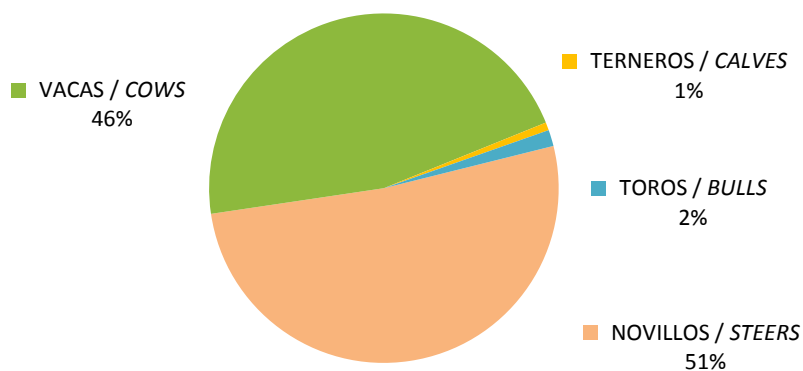
SLAUGHTER BY CLASS - BOVINE

2014

Cabezas / Heads

| MES / MONTH | NOVILLOS | VACAS | TERNEROS | TOROS | TOTAL |
|------------------------------------|----------------|----------------|---------------|---------------|------------------|
| | STEERS | COWS | CALVES | BULLS | |
| ENERO/JANUARY | 87.450 | 81.067 | 2.077 | 2.513 | 173.107 |
| FEBRERO/FEBRUARY | 74.995 | 70.529 | 1.997 | 1.980 | 149.501 |
| MARZO/MARCH | 96.356 | 71.540 | 1.734 | 2.245 | 171.875 |
| PRIMER TRIMESTRE / FIRST QUARTER | 258.801 | 223.136 | 5.808 | 6.738 | 494.483 |
| ABRIL/APRIL | 105.154 | 91.059 | 1.374 | 3.342 | 200.929 |
| MAYO/MAY | 109.176 | 93.032 | 979 | 2.835 | 206.022 |
| JUNIO/JUNE | 97.203 | 96.205 | 865 | 3.375 | 197.648 |
| SEGUNDO TRIMESTRE / SECOND QUARTER | 311.533 | 280.296 | 3.218 | 9.552 | 604.599 |
| PRIMER SEMESTRE/FIRST SEMESTER | 570.334 | 503.432 | 9.026 | 16.290 | 1.099.082 |
| JULIO/JULY | 74.253 | 75.132 | 840 | 2.749 | 152.974 |
| AGOSTO/AUGUST | 72.992 | 70.193 | 652 | 2.176 | 146.013 |
| SETIEMBRE/SEPTEMBER | 77.730 | 64.477 | 829 | 1.979 | 145.015 |
| TERCER TRIMESTRE/THIRD QUARTER | 224.975 | 209.802 | 2.321 | 6.904 | 444.002 |
| OCTUBRE/OCTOBER | | | | | |
| NOVIEMBRE/NOVEMBER | | | | | |
| DICIEMBRE/DECEMBER | | | | | |
| CUARTO TRIMESTRE/FOURTH QUARTER | | | | | |
| SEGUNDO SEMESTRE/SECOND SEMESTER | | | | | |
| TOTAL | 795.309 | 713.234 | 11.347 | 23.194 | 1.543.084 |

FAENA DE BOVINOS POR CATEGORIA / BOVINE SLAUGHTER BY CLASS



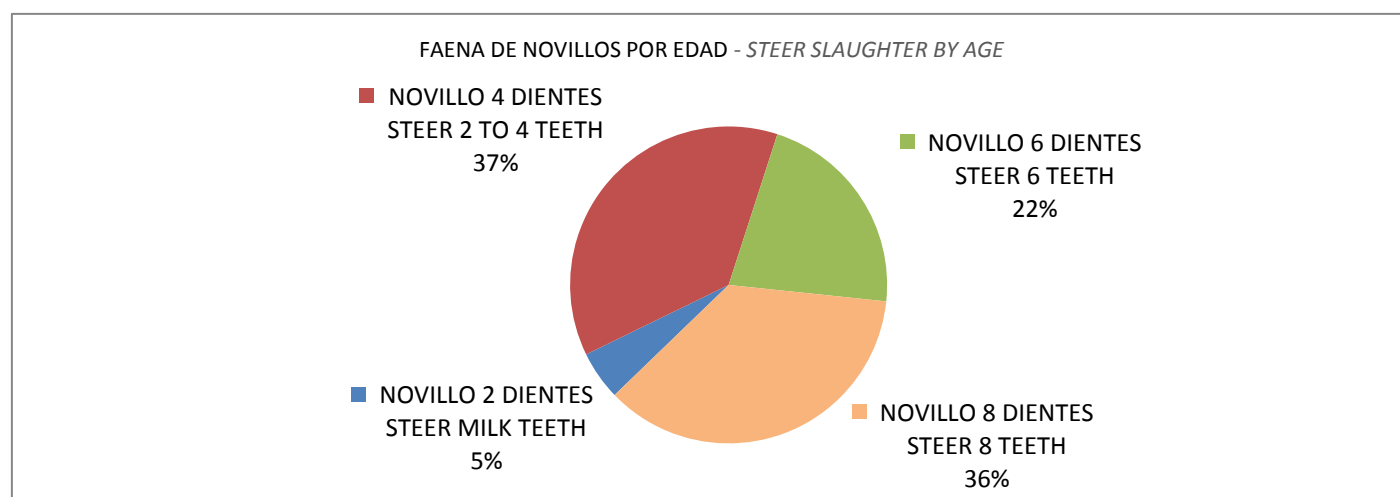
FAENA POR CATEGORÍA - NOVILLOS POR EDAD

SLAUGHTER BY CLASS - STEERS BY AGE

2014

Cabezas / Heads

| MES / MONTH | NOVILLO 2 DIENTES | NOVILLO 4 DIENTES | NOVILLO 6 DIENTES | NOVILLO 8 DIENTES | TOTAL |
|------------------------------------|----------------------|-----------------------|----------------------|----------------------|---------|
| | STEER MILK TEETH | STEER 2 TO 4 TEETH | STEER 6 TEETH | STEER 8 TEETH | |
| ENERO/JANUARY | 3.071 | 39.656 | 17.771 | 26.952 | 87.450 |
| FEBRERO/FEBRUARY | 2.212 | 26.406 | 16.747 | 29.630 | 74.995 |
| MARZO/MARCH | 2.779 | 31.438 | 22.586 | 39.553 | 96.356 |
| PRIMER TRIMESTRE / FIRST QUARTER | 8.062 | 97.500 | 57.104 | 96.135 | 258.801 |
| ABRIL/APRIL | 4.559 | 31.426 | 26.588 | 42.581 | 105.154 |
| MAYO/MAY | 5.208 | 31.081 | 26.396 | 46.491 | 109.176 |
| JUNIO/JUNE | 5.313 | 29.272 | 22.088 | 40.530 | 97.203 |
| SEGUNDO TRIMESTRE / SECOND QUARTER | 15.080 | 91.779 | 75.072 | 129.602 | 311.533 |
| PRIMER SEMESTRE/FIRST SEMESTER | 23.142 | 189.279 | 132.176 | 225.737 | 570.334 |
| JULIO/JULY | 5.866 | 28.446 | 14.327 | 25.614 | 74.253 |
| AGOSTO/AUGUST | 5.366 | 34.242 | 11.905 | 21.479 | 72.992 |
| SETIEMBRE/SEPTEMBER | 5.419 | 43.879 | 13.972 | 14.460 | 77.730 |
| TERCER TRIMESTRE/THIRD QUARTER | 16.651 | 106.567 | 40.204 | 61.553 | 224.975 |
| OCTUBRE/OCTOBER | | | | | |
| NOVIEMBRE/NOVEMBER | | | | | |
| DICIEMBRE/DECEMBER | | | | | |
| CUARTO TRIMESTRE/FOURTH QUARTER | | | | | |
| SEGUNDO SEMESTRE/SECOND SEMESTER | | | | | |
| TOTAL | 39.793 | 295.846 | 172.380 | 287.290 | 795.309 |



FAENA POR CATEGORÍA - VACAS POR EDAD

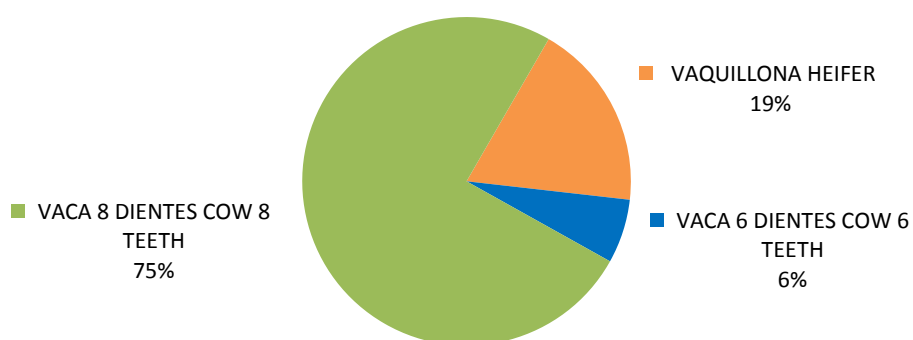
SLAUGHTER BY CLASS - COWS BY AGE

2014

Cabezas / Heads

| MES / MONTH | VAQUILLONA | VACA 6 DIENTES | VACA 8 DIENTES | TOTAL |
|------------------------------------|------------|-------------------|-------------------|---------|
| | HEIFER | COW 6 TEETH | COW 8 TEETH | |
| ENERO/JANUARY | 15.287 | 5.482 | 60.298 | 81.067 |
| FEBRERO/FEBRUARY | 12.613 | 5.029 | 52.887 | 70.529 |
| MARZO/MARCH | 13.225 | 4.289 | 54.026 | 71.540 |
| PRIMER TRIMESTRE / FIRST QUARTER | 41.125 | 14.800 | 167.211 | 223.136 |
| ABRIL/APRIL | 15.133 | 5.471 | 70.455 | 91.059 |
| MAYO/MAY | 14.876 | 5.681 | 72.475 | 93.032 |
| JUNIO/JUNE | 15.663 | 5.653 | 74.889 | 96.205 |
| SEGUNDO TRIMESTRE / SECOND QUARTER | 45.672 | 16.805 | 217.819 | 280.296 |
| PRIMER SEMESTRE/FIRST SEMESTER | 86.797 | 31.605 | 385.030 | 503.432 |
| JULIO/JULY | 14.723 | 4.532 | 55.877 | 75.132 |
| AGOSTO/AUGUST | 15.134 | 4.509 | 50.550 | 70.193 |
| SETIEMBRE/SEPTEMBER | 15.041 | 4.308 | 45.128 | 64.477 |
| TERCER TRIMESTRE/THIRD QUARTER | 44.898 | 13.349 | 151.555 | 209.802 |
| OCTUBRE/OCTOBER | | | | |
| NOVIEMBRE/NOVEMBER | | | | |
| DICIEMBRE/DECEMBER | | | | |
| CUARTO TRIMESTRE/FOURTH QUARTER | | | | |
| SEGUNDO SEMESTRE/SECOND SEMESTER | | | | |
| TOTAL | 131.695 | 44.954 | 536.585 | 713.234 |

FAENA DE VACAS POR EDAD / COW SLAUGHTER BY AGE



FAENA POR CATEGORÍA - OVINOS

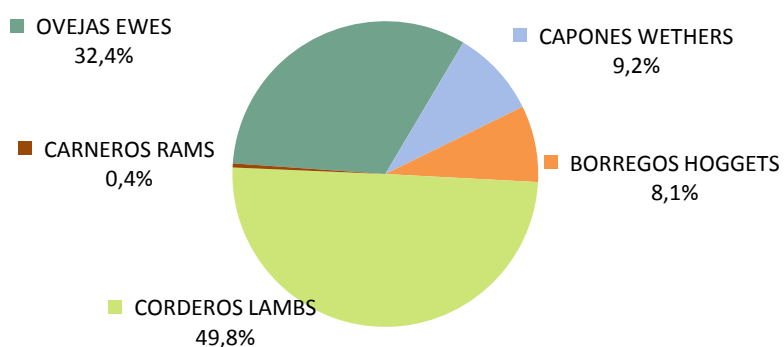
SLAUGHTER BY CLASS - SHEEP

2014

Cabezas / Heads

| MES / MONTH | OVEJAS | CAPONES | BORREGOS | CORDEROS | CARNEROS | TOTAL |
|------------------------------------|----------------|---------------|---------------|----------------|--------------|----------------|
| | EWES | WETHERS | HOGGETS | LAMBS | RAMS | |
| ENERO/JANUARY | 43.869 | 16.690 | 10.954 | 57.940 | 741 | 130.194 |
| FEBRERO/FEBRUARY | 43.832 | 11.284 | 9.112 | 37.131 | 297 | 101.656 |
| MARZO/MARCH | 51.352 | 10.512 | 10.554 | 46.311 | 554 | 119.283 |
| PRIMER TRIMESTRE / FIRST QUARTER | 139.053 | 38.486 | 30.620 | 141.382 | 1.592 | 351.133 |
| ABRIL/APRIL | 41.864 | 7.686 | 10.250 | 31.638 | 421 | 91.859 |
| MAYO/MAY | 35.663 | 7.151 | 10.155 | 36.946 | 670 | 90.585 |
| JUNIO/JUNE | 19.323 | 2.738 | 5.785 | 36.213 | 294 | 64.353 |
| SEGUNDO TRIMESTRE / SECOND QUARTER | 96.850 | 17.575 | 26.190 | 104.797 | 1.385 | 246.797 |
| PRIMER SEMESTRE/FIRST SEMESTER | 235.903 | 56.061 | 56.810 | 246.179 | 2.977 | 597.930 |
| JULIO/JULY | 16.113 | 2.407 | 5.127 | 44.893 | 290 | 68.830 |
| AGOSTO/AUGUST | 16.696 | 9.734 | 3.960 | 58.241 | 153 | 88.784 |
| SETIEMBRE/SEPTEMBER | 18.669 | 13.619 | 5.848 | 92.663 | 384 | 131.183 |
| TERCER TRIMESTRE/THIRD QUARTER | 51.478 | 25.760 | 14.935 | 195.797 | 827 | 288.797 |
| OCTUBRE/OCTOBER | | | | | | |
| NOVIEMBRE/NOVEMBER | | | | | | |
| DICIEMBRE/DECEMBER | | | | | | |
| CUARTO TRIMESTRE/FOURTH QUARTER | | | | | | |
| SEGUNDO SEMESTRE/SECOND SEMESTER | | | | | | |
| TOTAL | 287.381 | 81.821 | 71.745 | 441.976 | 3.804 | 886.727 |

FAENA POR CATEGORIA - OVINOS / SLAUGHTER BY CLASS



FAENA POR CATEGORÍA - PORCINOS Y EQUINOS
 SLAUGHTER BY CLASS - SWINE AND HORSES
 2014

Cabezas / Heads

| MES / MONTH | PORCINOS / SWINE | | | EQUINOS HORSES |
|------------------------------------|------------------|----------|---------|-------------------|
| | CERDOS | LECHONES | TOTAL | |
| | PIGS | PIGLETS | | |
| ENERO/JANUARY | 13.564 | 542 | 14.106 | 3.785 |
| FEBRERO/FEBRUARY | 13.157 | 553 | 13.710 | 2.983 |
| MARZO/MARCH | 14.150 | 928 | 15.078 | 3.373 |
| PRIMER TRIMESTRE / FIRST QUARTER | 40.871 | 2.023 | 42.894 | 10.141 |
| ABRIL/APRIL | 13.513 | 1.526 | 15.039 | 3.051 |
| MAYO/MAY | 13.500 | 2.152 | 15.652 | 3.441 |
| JUNIO/JUNE | 13.055 | 3.005 | 16.060 | 3.752 |
| SEGUNDO TRIMESTRE / SECOND QUARTER | 40.068 | 6.683 | 46.751 | 10.244 |
| PRIMER SEMESTRE/FIRST SEMESTER | 80.939 | 8.706 | 89.645 | 20.385 |
| JULIO/JULY | 14.075 | 2.571 | 16.646 | 2.465 |
| AGOSTO/AUGUST | 12.534 | 1.411 | 13.945 | 2.652 |
| SETIEMBRE/SEPTEMBER | 13.764 | 1.384 | 15.148 | 2.431 |
| TERCER TRIMESTRE/THIRD QUARTER | 40.373 | 5.366 | 45.739 | 7.548 |
| OCTUBRE/OCTOBER | | | | |
| NOVIEMBRE/NOVEMBER | | | | |
| DICIEMBRE/DECEMBER | | | | |
| CUARTO TRIMESTRE/FOURTH QUARTER | | | | |
| SEGUNDO SEMESTRE/SECOND SEMESTER | | | | |
| TOTAL | 121.312 | 14.072 | 135.384 | 27.933 |

FAENA POR ESTABLECIMIENTO - BOVINOS POR CATEGORÍA

SLAUGHTER BY ABATTOIR - BOVINE BY CLASS

SETIEMBRE / SEPTEMBER 2014

Cabezas / Heads

| ESTABLECIMIENTO / ABATTOIR | BOVINOS / BOVINE | | | | |
|--------------------------------------|------------------|--------|----------|-------|---------|
| | NOVILLOS | VACAS | TERNEROS | TOROS | TOTAL |
| | STEERS | COWS | CALVES | BULLS | |
| FRIGORIFICO TACUAREMBO S.A. | 7.798 | 4.456 | 9 | 230 | 12.493 |
| BREEDERS PACKERS URUGUAY S.A. | 8.212 | 2.973 | 0 | 71 | 11.256 |
| PULSA S.A. | 5.205 | 4.246 | 3 | 100 | 9.554 |
| INALER S.A. | 5.827 | 3.398 | 31 | 62 | 9.318 |
| FRIGORIFICO LAS PIEDRAS S.A. | 6.331 | 2.760 | 4 | 15 | 9.110 |
| FRIGORIFICO CANELONES S.A. | 4.393 | 3.792 | 84 | 194 | 8.463 |
| ESTABLECIMIENTOS COLONIA S.A. | 3.744 | 4.297 | 11 | 277 | 8.329 |
| FRIGORIFICO SAN JACINTO-NIREA S.A. | 4.148 | 3.843 | 1 | 55 | 8.047 |
| ONTILCOR S.A. (FRIG. MATADERO PANDO) | 4.391 | 3.074 | 1 | 28 | 7.494 |
| FRIGORIFICO MATADERO CARRASCO S.A. | 2.870 | 3.628 | 3 | 45 | 6.546 |
| COPAYAN S.A. | 1.517 | 3.578 | 22 | 39 | 5.156 |
| FRIGORIFICO CASABLANCA S.A. | 1.887 | 3.044 | 27 | 34 | 4.992 |
| CHIADEL S.A. | 2.913 | 1.837 | 0 | 34 | 4.784 |
| BILACOR S.A. | 3.163 | 1.447 | 1 | 49 | 4.660 |
| ARDISTAR S.A. | 2.095 | 2.183 | 34 | 64 | 4.376 |
| SIRSIL S.A. | 2.181 | 2.113 | 0 | 20 | 4.314 |
| ERSINAL S.A. | 2.783 | 1.284 | 5 | 32 | 4.104 |
| LORSINAL S.A. | 3.061 | 985 | 0 | 21 | 4.067 |
| RONDATEL S.A. | 1.551 | 2.207 | 2 | 36 | 3.796 |
| ARROYAL SOCIEDAD ANONIMA | 1.111 | 1.462 | 149 | 78 | 2.800 |
| SUC. CARLOS SCHNECK S.A. | 96 | 1.551 | 45 | 218 | 1.910 |
| CRAVEA LEMA MIRIAN ZULMA | 795 | 423 | 306 | 11 | 1.535 |
| FRIGOCERRO S.A. | 243 | 1.096 | 0 | 100 | 1.439 |
| OFERAN S.A. | 221 | 1.095 | 0 | 20 | 1.336 |
| FRIGORIFICO CUAREIM LTDA. | 151 | 663 | 0 | 39 | 853 |
| MATADERO LOS OLIVOS SOC. COL. | 406 | 376 | 11 | 42 | 835 |
| SIMPLIFY S.A. | 35 | 666 | 5 | 44 | 750 |
| LUCHASOL S.A. | 31 | 498 | 30 | 15 | 574 |
| LA TABLADA S.R.L. | 41 | 462 | 17 | 0 | 520 |
| FRIGORIFICO MARTINEZ S.R.L. | 268 | 227 | 17 | 2 | 514 |
| MATADERO MERCEDES LTDA. | 82 | 349 | 0 | 0 | 431 |
| LINERIM S.A. | 123 | 249 | 10 | 4 | 386 |
| INTENDENCIA MUNICIPAL DE ARTIGAS | 57 | 215 | 1 | 0 | 273 |
| SIDERCOL S.A. | 0 | 0 | 0 | 0 | 0 |
| CLEDINOR S.A. | 0 | 0 | 0 | 0 | 0 |
| Total | 77.730 | 64.477 | 829 | 1.979 | 145.015 |

FAENA POR ESTABLECIMIENTO - BOVINOS POR CATEGORÍA

SLAUGHTER BY ABATTOIR - BOVINE BY CLASS

ENERO / SETIEMBRE - JANUARY / SEPTEMBER 2014

Cabezas / Heads

| ESTABLECIMIENTO / ABATTOIR | BOVINOS / BOVINE | | | | TOTAL |
|--------------------------------------|------------------|---------|----------|--------|-----------|
| | NOVILLOS | VACAS | TERNEROS | TOROS | |
| | STEERS | COWS | CALVES | BULLS | |
| BREEDERS PACKERS URUGUAY S.A. | 63.357 | 46.688 | 42 | 972 | 111.059 |
| FRIGORIFICO TACUAREMBO S.A. | 53.583 | 53.710 | 43 | 2.012 | 109.348 |
| FRIGORIFICO CANELONES S.A. | 44.250 | 54.935 | 126 | 2.204 | 101.515 |
| FRIGORIFICO LAS PIEDRAS S.A. | 73.140 | 26.652 | 13 | 510 | 100.315 |
| PULSA S.A. | 54.023 | 39.927 | 4 | 921 | 94.875 |
| FRIGORIFICO MATADERO CARRASCO S.A. | 46.961 | 44.255 | 37 | 847 | 92.100 |
| FRIGORIFICO SAN JACINTO-NIREA S.A. | 48.458 | 40.941 | 2 | 946 | 90.347 |
| CLEDINOR S.A. | 46.668 | 33.562 | 37 | 840 | 81.107 |
| ONTILCOR S.A. (FRIG. MATADERO PANDO) | 44.093 | 31.723 | 36 | 801 | 76.653 |
| ESTABLECIMIENTOS COLONIA S.A. | 40.055 | 33.379 | 89 | 1.085 | 74.608 |
| INALER S.A. | 39.652 | 29.915 | 259 | 498 | 70.324 |
| COPAYAN S.A. | 15.176 | 40.458 | 101 | 547 | 56.282 |
| CHIADEL S.A. | 34.933 | 19.317 | 16 | 520 | 54.786 |
| BILACOR S.A. | 39.506 | 13.261 | 1 | 278 | 53.046 |
| ERSINAL S.A. | 33.126 | 18.084 | 871 | 864 | 52.945 |
| FRIGORIFICO CASABLANCA S.A. | 15.816 | 31.163 | 711 | 368 | 48.058 |
| SIRSIL S.A. | 18.277 | 27.256 | 4 | 406 | 45.943 |
| LORSINAL S.A. | 32.451 | 11.417 | 249 | 198 | 44.315 |
| RONDATEL S.A. | 12.184 | 18.333 | 47 | 727 | 31.291 |
| SUC. CARLOS SCHNECK S.A. | 5.075 | 20.139 | 595 | 4.523 | 30.332 |
| ARDISTAR S.A. | 10.756 | 14.328 | 2.104 | 544 | 27.732 |
| ARROYAL SOCIEDAD ANONIMA | 7.788 | 12.258 | 2.189 | 726 | 22.961 |
| CRAVEA LEMA MIRIAN ZULMA | 4.521 | 5.181 | 2.623 | 84 | 12.409 |
| SIMPLIFY S.A. | 273 | 8.401 | 32 | 136 | 8.842 |
| FRIGOCERRO S.A. | 1.679 | 6.203 | 0 | 494 | 8.376 |
| OFERAN S.A. | 1.238 | 6.094 | 2 | 84 | 7.418 |
| FRIGORIFICO CUAREIM LTDA. | 1.281 | 4.717 | 7 | 360 | 6.365 |
| MATADERO LOS OLIVOS SOC. COL. | 1.991 | 3.894 | 180 | 280 | 6.345 |
| LA TABLADA S.R.L. | 553 | 4.157 | 138 | 167 | 5.015 |
| FRIGORIFICO MARTINEZ S.R.L. | 1.997 | 2.604 | 243 | 39 | 4.883 |
| LUCHASOL S.A. | 261 | 3.908 | 399 | 125 | 4.693 |
| MATADERO MERCEDES LTDA. | 761 | 2.838 | 28 | 0 | 3.627 |
| LINERIM S.A. | 669 | 1.739 | 118 | 83 | 2.609 |
| INTENDENCIA MUNICIPAL DE ARTIGAS | 742 | 1.774 | 1 | 4 | 2.521 |
| SIDERCOL S.A. | 15 | 23 | 0 | 1 | 39 |
| Total | 795.309 | 713.234 | 11.347 | 23.194 | 1.543.084 |

FAENA POR ESTABLECIMIENTO - OVINOS POR CATEGORÍA
 SLAUGHTER BY ABATTOIR - SHEEP BY CLASS
 SETIEMBRE / SEPTEMBER 2014

Cabezas / Heads

| ESTABLECIMIENTO / ABATTOIR | OVINOS / SHEEP | | | | | TOTAL |
|------------------------------------|----------------|--------------------|---------------------|-------------------|------------------|---------|
| | OVEJAS EWES | CAPONES WETHERS | BORREGOS HOGGETS | CORDEROS LAMBS | CARNEROS RAMS | |
| FRIGORIFICO SAN JACINTO-NIREA S.A. | 1.799 | 351 | 276 | 34.389 | 46 | 36.861 |
| FRIGORIFICO LAS PIEDRAS S.A. | 4.469 | 2.232 | 765 | 14.037 | 10 | 21.513 |
| SOMICAR S.A. | 1.980 | 6.070 | 1.234 | 8.772 | 124 | 18.180 |
| CALTES S.A. | 2.595 | 1.031 | 645 | 7.896 | 23 | 12.190 |
| FRIGORIFICO MATADERO CARRASCO S.A. | 1.149 | 321 | 953 | 9.376 | 45 | 11.844 |
| CHIADEL S.A. | 906 | 475 | 153 | 5.360 | 13 | 6.907 |
| SIDERCOL S.A. | 1.550 | 1.044 | 505 | 3.561 | 55 | 6.715 |
| FRIGOCERRO S.A. | 994 | 6 | 544 | 4.052 | 54 | 5.650 |
| INTENDENCIA MUNICIPAL DE ARTIGAS | 1.542 | 1.489 | 604 | 1.756 | 0 | 5.391 |
| OFERAN S.A. | 705 | 44 | 25 | 2.553 | 14 | 3.341 |
| RONDATEL S.A. | 465 | 0 | 0 | 306 | 0 | 771 |
| LA TABLADA S.R.L. | 235 | 259 | 0 | 34 | 0 | 528 |
| ARROYAL SOCIEDAD ANONIMA | 109 | 41 | 28 | 335 | 0 | 513 |
| FRIGORIFICO CUAREIM LTDA. | 171 | 38 | 90 | 0 | 0 | 299 |
| LUCHASOL S.A. | 0 | 218 | 26 | 30 | 0 | 274 |
| FRIGORIFICO CASABLANCA S.A. | 0 | 0 | 0 | 206 | 0 | 206 |
| CLEDINOR S.A. | 0 | 0 | 0 | 0 | 0 | 0 |
| SIMPLIFY S.A. | 0 | 0 | 0 | 0 | 0 | 0 |
| FRIGORIFICO MARTINEZ S.R.L. | 0 | 0 | 0 | 0 | 0 | 0 |
| MATADERO MERCEDES LTDA. | 0 | 0 | 0 | 0 | 0 | 0 |
| INALER S.A. | 0 | 0 | 0 | 0 | 0 | 0 |
| LINERIM S.A. | 0 | 0 | 0 | 0 | 0 | 0 |
| Total | 18.669 | 13.619 | 5.848 | 92.663 | 384 | 131.183 |

FAENA POR ESTABLECIMIENTO - OVINOS POR CATEGORÍA
 SLAUGHTER BY ABATTOIR - SHEEP BY CLASS
 ENERO / SETIEMBRE - JANUARY / SEPTEMBER 2014

Cabezas / Heads

| ESTABLECIMIENTO / <i>ABATTOIR</i> | OVINOS / <i>SHEEP</i> | | | | | TOTAL |
|------------------------------------|-----------------------|----------------|----------------|--------------|-------------|---------|
| | OVEJAS | CAPONES | BORREGOS | CORDEROS | CARNEROS | |
| | <i>EWES</i> | <i>WETHERS</i> | <i>HOGGETS</i> | <i>LAMBS</i> | <i>RAMS</i> | |
| FRIGORIFICO SAN JACINTO-NIREA S.A. | 30.021 | 5.015 | 8.390 | 104.958 | 668 | 149.052 |
| FRIGOCERRO S.A. | 50.206 | 12.771 | 11.371 | 51.880 | 515 | 126.743 |
| SOMICAR S.A. | 44.884 | 20.386 | 5.716 | 53.366 | 789 | 125.141 |
| FRIGORIFICO LAS PIEDRAS S.A. | 34.560 | 12.172 | 5.570 | 58.798 | 274 | 111.374 |
| CALTES S.A. | 35.663 | 6.639 | 10.717 | 50.511 | 367 | 103.897 |
| FRIGORIFICO MATADERO CARRASCO S.A. | 9.067 | 1.518 | 17.978 | 47.244 | 256 | 76.063 |
| OFERAN S.A. | 27.165 | 5.865 | 4.913 | 20.389 | 257 | 58.589 |
| SIDERCOL S.A. | 22.591 | 5.380 | 2.002 | 8.925 | 362 | 39.260 |
| CHIADEL S.A. | 5.949 | 1.576 | 2.392 | 27.829 | 109 | 37.855 |
| INTENDENCIA MUNICIPAL DE ARTIGAS | 13.214 | 4.898 | 1.200 | 4.463 | 60 | 23.835 |
| FRIGORIFICO CUAREIM LTDA. | 3.755 | 346 | 450 | 2.998 | 0 | 7.549 |
| LA TABLADA S.R.L. | 3.405 | 1.881 | 189 | 1.868 | 97 | 7.440 |
| RONDATEL S.A. | 3.304 | 132 | 248 | 1.246 | 13 | 4.943 |
| LUCHASOL S.A. | 1.686 | 1.850 | 201 | 868 | 11 | 4.616 |
| ARROYAL SOCIEDAD ANONIMA | 987 | 311 | 150 | 2.692 | 5 | 4.145 |
| INALER S.A. | 876 | 897 | 220 | 402 | 6 | 2.401 |
| FRIGORIFICO CASABLANCA S.A. | 27 | 0 | 0 | 1.679 | 0 | 1.706 |
| FRIGORIFICO MARTINEZ S.R.L. | 21 | 184 | 38 | 1.324 | 15 | 1.582 |
| SIMPLIFY S.A. | 0 | 0 | 0 | 526 | 0 | 526 |
| LINERIM S.A. | 0 | 0 | 0 | 10 | 0 | 10 |
| MATADERO MERCEDES LTDA. | 0 | 0 | 0 | 0 | 0 | 0 |
| CLEDINOR S.A. | 0 | 0 | 0 | 0 | 0 | 0 |
| Total | 287.381 | 81.821 | 71.745 | 441.976 | 3.804 | 886.727 |

FAENA POR ESTABLECIMIENTO - PORCINOS Y EQUINOS POR CATEGORÍA

SLAUGHTER BY ABATTOIR - SWINE AND HORSES BY CLASS

SETIEMBRE / SEPTEMBER 2014

Cabezas / Heads

| ESTABLECIMIENTO / <i>ABATTOIR</i> | PORCINOS / <i>SWINE</i> | | | EQUINOS <i>HORSES</i> |
|-----------------------------------|-------------------------|----------------|---------------|--------------------------|
| | CERDOS | LECHONES | TOTAL | |
| | <i>PIGS</i> | <i>PIGLETS</i> | | |
| MIRNABEL S.A. | 6.477 | 629 | 7.106 | |
| ARDISTAR S.A. | 5.315 | 96 | 5.411 | |
| RONDATEL S.A. | 819 | 176 | 995 | |
| ARROYAL SOCIEDAD ANONIMA | 325 | 430 | 755 | |
| SIDERCOL S.A. | 618 | 0 | 618 | |
| MATADERO LOS OLIVOS SOC. COL. | 202 | 51 | 253 | |
| INTENDENCIA MUNICIPAL DE ARTIGAS | 7 | 0 | 7 | |
| LUCHASOL S.A. | 1 | 2 | 3 | |
| SIMPLIFY S.A. | 0 | 0 | 0 | |
| SUC. CARLOS SCHNECK S.A. | 0 | 0 | 0 | |
| MATADERO MERCEDES LTDA. | 0 | 0 | 0 | |
| LA TABLADA S.R.L. | 0 | 0 | 0 | |
| CLAY S.A. | | | | 1.213 |
| SAREL S.A. | | | | 690 |
| AGROINDUSTRIAL DEL ESTE S.A. | | | | 528 |
| Total | 13.764 | 1.384 | 15.148 | 2.431 |

FAENA POR ESTABLECIMIENTO - PORCINOS Y EQUINOS POR CATEGORÍA

SLAUGHTER BY ABATTOIR - SWINE AND HORSES BY CLASS

ENERO / SETIEMBRE - JANUARY / SEPTEMBER 2014

Cabezas / Heads

| ESTABLECIMIENTO / ABATTOIR | PORCINOS / SWINE | | | EQUINOS HORSES |
|----------------------------------|------------------|---------------|----------------|-------------------|
| | CERDOS | LECHONES | TOTAL | |
| | PIGS | PIGLETS | | |
| MIRNABEL S.A. | 53.857 | 5.460 | 59.317 | |
| ARDISTAR S.A. | 47.258 | 1.542 | 48.800 | |
| ARROYAL SOCIEDAD ANONIMA | 4.438 | 5.598 | 10.036 | |
| RONDATEL S.A. | 8.072 | 1.155 | 9.227 | |
| SIDERCOL S.A. | 5.160 | 0 | 5.160 | |
| MATADERO LOS OLIVOS SOC. COL. | 2.498 | 264 | 2.762 | |
| LUCHASOL S.A. | 11 | 53 | 64 | |
| INTENDENCIA MUNICIPAL DE ARTIGAS | 18 | 0 | 18 | |
| SIMPLIFY S.A. | 0 | 0 | 0 | |
| SUC. CARLOS SCHNECK S.A. | 0 | 0 | 0 | |
| MATADERO MERCEDES LTDA. | 0 | 0 | 0 | |
| LA TABLADA S.R.L. | 0 | 0 | 0 | |
| AGROINDUSTRIAL DEL ESTE S.A. | | | | 6.322 |
| CLAY S.A. | | | | 13.251 |
| SAREL S.A. | | | | 8.360 |
| Total | 121.312 | 14.072 | 135.384 | 27.933 |

EXPORTACIONES TOTALES POR PRODUCTO

TOTAL EXPORTS BY PRODUCT

Ene/Sep / Jan/Sep

2013 - 2014

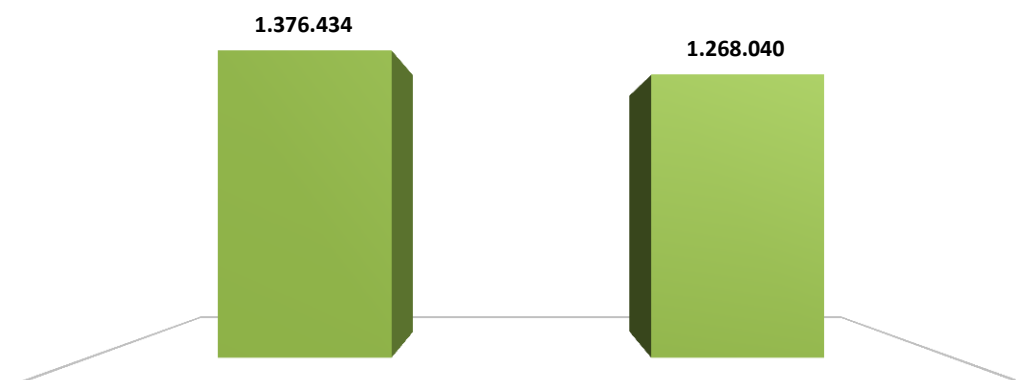
Toneladas peso embarque / Tons shipped weight

| PRODUCTO / PRODUCT | 2014 | 2013 | Variación Porcentual |
|---|-------------------|-------------------|----------------------|
| | Ene/Sep / Jan/Sep | Ene/Sep / Jan/Sep | Percent Change |
| CARNE BOVINA | 188.331 | 186.758 | ↑ 0,8 |
| BEEF | | | |
| CARNE OVINA | 11.836 | 11.865 | ↓ -0,2 |
| OVINE MEAT | | | |
| CARNE EQUINA | 4.335 | 3.333 | ↑ 30,1 |
| HORSE MEAT | | | |
| CARNE DE AVE | 12.838 | 8.562 | ↑ 49,9 |
| POULTRY MEAT | | | |
| CARNE DE ANIMALES DE CAZA MENOR | 151 | 197 | ↓ -23,4 |
| SMALL GAME MEAT | | | |
| MENUDENCIAS | 21.801 | 20.246 | ↑ 7,7 |
| OFFALS | | | |
| SUBPRODUCTO RESIDUAL COMESTIBLE | 24.623 | 10.767 | ↑ 128,7 |
| REMAINING EDIBLE BYPRODUCT | | | |
| SUBPRODUCTO PRIMARIO PARA USO INDUSTRIAL | 35.638 | 44.242 | ↓ -19,4 |
| PRIMARY BYPRODUCT FOR INDUSTRIAL USE | | | |
| SUBPRODUCTO INDUSTRIALIZADO | 35.079 | 38.667 | ↓ -9,3 |
| INDUSTRIALIZED BYPRODUCT | | | |
| PRODUCTO CARNICO PARA ALIMENTACION ANIMAL | 855 | 436 | ↑ 96,1 |
| MEAT PRODUCT FOR ANIMAL FODDAGE | | | |
| TOTAL | 335.487 | 325.072 | ↑ 3,2 |

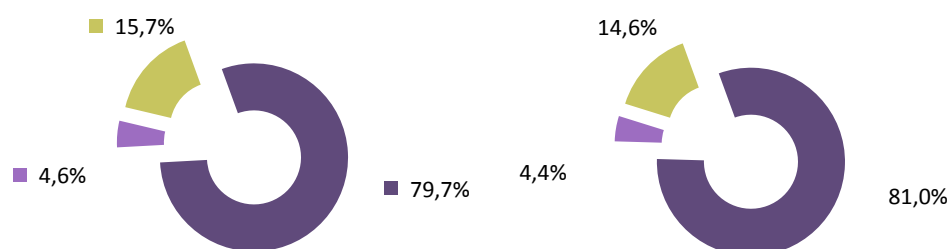
EXPORTACIONES TOTALES DEL SECTOR CARNICO
 TOTAL MEAT EXPORTS
 Ene/Sep / Jan/Sep

IMPORTE FOB Miles de dólares

| 2014 | 2013 |
|-------------------|-------------------|
| Ene/Sep / Jan/Sep | Ene/Sep / Jan/Sep |



| Ene/Sep / Jan/Sep | Ene/Sep / Jan/Sep |
|-------------------|-------------------|
| 2014 | 2013 |



| | Ene/Sep / Jan/Sep | Ene/Sep / Jan/Sep |
|--------------------------|-------------------|-------------------|
| | 2014 | 2013 |
| CARNE BOVINA / BEEF | 1.097.020 | 1.027.342 |
| CARNE OVINA / OVINE MEAT | 62.770 | 55.284 |
| OTRAS CARNES / OTHERS | 216.643 | 185.414 |
| TOTAL | 1.376.434 | 1.268.040 |

EXPORTACIONES TOTALES DEL SECTOR CARNICO

TOTAL MEAT EXPORTS

2013 - 2014

Importe FOB (Miles de dólares)

FOB Value (Thousand dollars)

| MES / MONTH | 2014 | | | | 2013 | | | |
|----------------------------------|-----------|------------|---------|-----------|-----------|------------|---------|-----------|
| | C. BOVINA | C. OVINA | OTROS | TOTAL | C. BOVINA | C. OVINA | OTROS | TOTAL |
| | BEEF | OVINE MEAT | OTHER | | BEEF | OVINE MEAT | OTHER | |
| Enero/January | 87.595 | 9.609 | 24.164 | 121.368 | 100.034 | 4.763 | 16.275 | 121.072 |
| Febrero/February | 90.778 | 5.932 | 15.557 | 112.267 | 128.826 | 6.133 | 22.947 | 157.906 |
| Marzo/March | 145.009 | 8.453 | 24.563 | 178.026 | 152.225 | 5.709 | 25.753 | 183.687 |
| Primer trimestre/First quarter | 323.382 | 23.994 | 64.285 | 411.661 | 381.085 | 16.604 | 64.976 | 462.665 |
| Abril/April | 126.861 | 8.025 | 19.772 | 154.659 | 118.091 | 6.064 | 21.765 | 145.920 |
| Mayo/May | 153.577 | 6.598 | 30.068 | 190.243 | 123.008 | 4.683 | 21.145 | 148.837 |
| Junio/June | 145.848 | 5.811 | 26.892 | 178.551 | 121.255 | 5.769 | 26.472 | 153.497 |
| Segundo trimestre/Second quarter | 426.286 | 20.435 | 76.732 | 523.452 | 362.355 | 16.516 | 69.383 | 448.253 |
| Primer semestre/First semester | 749.668 | 44.428 | 141.017 | 935.113 | 743.440 | 33.120 | 134.359 | 910.919 |
| Julio/July | 128.895 | 5.182 | 27.473 | 161.550 | 99.491 | 6.251 | 15.859 | 121.602 |
| Agosto/August | 94.063 | 4.262 | 20.593 | 118.918 | 97.040 | 6.511 | 16.414 | 119.965 |
| Septiembre/September | 124.394 | 8.898 | 27.560 | 160.853 | 87.371 | 9.402 | 18.782 | 115.556 |
| Tercer trimestre/Third quarter | 347.353 | 18.342 | 75.626 | 441.320 | 283.902 | 22.164 | 51.056 | 357.122 |
| Octubre/October | | | | | 72.400 | 10.184 | 12.343 | 94.927 |
| Noviembre/November | | | | | 119.769 | 15.262 | 20.029 | 155.060 |
| Diciembre/December | | | | | 118.524 | 11.219 | 22.671 | 152.414 |
| Cuarto trimestre/Fourth quarter | | | | | 310.693 | 36.665 | 55.043 | 402.401 |
| Segundo semestre/Second semester | | | | | 594.595 | 58.828 | 106.099 | 759.523 |
| TOTAL | 1.097.020 | 62.770 | 216.643 | 1.376.434 | 1.338.035 | 91.949 | 240.458 | 1.670.441 |

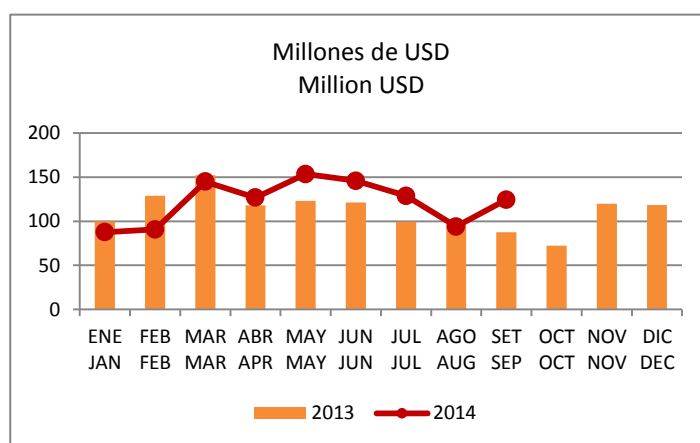
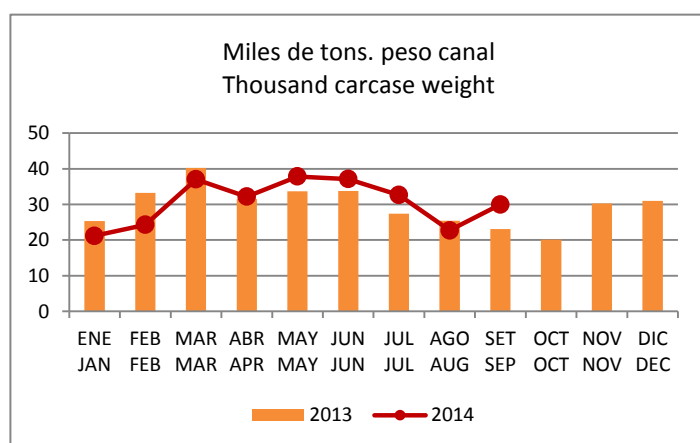
EXPORTACIONES DE CARNE BOVINA

BEEF EXPORTS

2013 2014

Volumen (peso embarque, peso canal*) Importe FOB e Ingreso Promedio**
Quantity (shipped weight, carcass weight*) FOB value and Average Income**

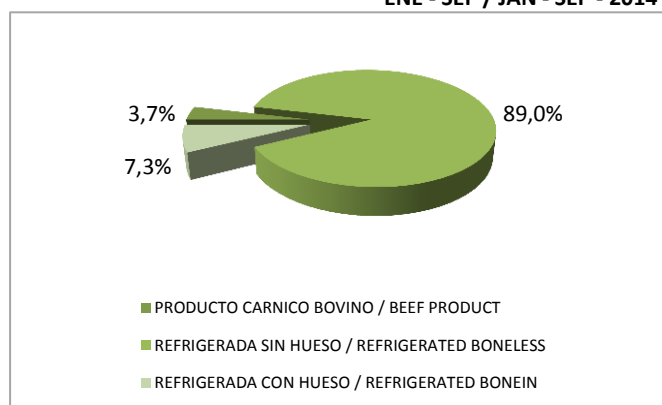
| MES / MONTH | 2014 | | | | 2013 | | | |
|----------------------------------|----------|---------|-----------|----------|----------|---------|-----------|----------|
| | PESO | PESO | MILES | USD/TON. | PESO | PESO | MILES | USD/TON. |
| | EMBARQUE | CANAL | DE | P.CANAL | EMBARQUE | CANAL | DE | P.CANAL |
| | SHIPPED | CARCASE | DÓLARES | USD/TONS | SHIPPED | CARCASE | DÓLARES | USD/TONS |
| | WEIGHT | WEIGHT | THOUSAND | CARCASE | WEIGHT | WEIGHT | THOUSAND | CARCASE |
| (TONS) | (TONS) | USD | WEIGHT | (TONS) | (TONS) | USD | WEIGHT | |
| Enero/January | 14.517 | 21.193 | 87.595 | 4.133 | 17.128 | 25.367 | 100.034 | 3.943 |
| Febrero/February | 16.485 | 24.281 | 90.778 | 3.739 | 22.633 | 33.211 | 128.826 | 3.879 |
| Marzo/March | 25.270 | 37.003 | 145.009 | 3.919 | 27.344 | 40.226 | 152.225 | 3.784 |
| Primer trimestre/First quarter | 56.271 | 82.477 | 323.382 | 3.921 | 67.105 | 98.804 | 381.085 | 3.857 |
| Abril/April | 22.152 | 32.193 | 126.861 | 3.941 | 21.771 | 31.532 | 118.091 | 3.745 |
| Mayo/May | 25.954 | 37.828 | 153.577 | 4.060 | 22.876 | 33.705 | 123.008 | 3.650 |
| Junio/June | 25.732 | 37.123 | 145.848 | 3.929 | 22.865 | 33.778 | 121.255 | 3.590 |
| Segundo trimestre/Second quarter | 73.838 | 107.143 | 426.286 | 3.979 | 67.513 | 99.015 | 362.355 | 3.660 |
| Primer semestre/First semester | 130.109 | 189.620 | 749.668 | 3.954 | 134.618 | 197.819 | 743.440 | 3.758 |
| Julio/July | 22.363 | 32.637 | 128.895 | 3.949 | 18.704 | 27.436 | 99.491 | 3.626 |
| Agosto/August | 15.478 | 22.706 | 94.063 | 4.143 | 17.378 | 25.398 | 97.040 | 3.821 |
| Septiembre/September | 20.381 | 29.957 | 124.394 | 4.152 | 16.057 | 23.128 | 87.371 | 3.778 |
| Tercer trimestre/Third quarter | 58.222 | 85.299 | 347.353 | 4.072 | 52.140 | 75.961 | 283.902 | 3.737 |
| Octubre/October | | | | | 13.599 | 20.160 | 72.400 | 3.591 |
| Noviembre/November | | | | | 20.653 | 30.219 | 119.769 | 3.963 |
| Diciembre/December | | | | | 20.845 | 30.999 | 118.524 | 3.823 |
| Cuarto trimestre/Fourth quarter | | | | | 55.096 | 81.377 | 310.693 | 3.818 |
| Segundo semestre/Second semester | | | | | 107.236 | 157.339 | 594.595 | 3.779 |
| TOTAL | 188.331 | 274.920 | 1.097.020 | 3.990 | 241.854 | 355.157 | 1.338.035 | 3.767 |



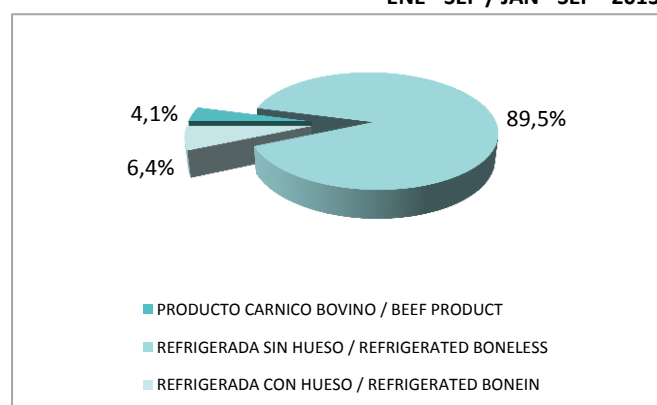
EXPORTACIONES DE CARNE BOVINA REFRIGERADA - PRODUCTO CÁRNICO BOVINO
 REFRIGERATED AND BEEF PRODUCT EXPORTS
 ENERO - SEPTIEMBRE/JANUARY - SEPTEMBER - 2013 - 2014

Tons. Peso Canal
 Tons. Carcase weight

ENE - SEP / JAN - SEP - 2014



ENE - SEP / JAN - SEP - 2013



| CARNE BOVINA / BEEF | ENE - SEP / JAN - SEP - 2014 | | ENE - SEP / JAN - SEP - 2013 | |
|---|------------------------------|---------------|------------------------------|---------------|
| PRODUCTO CÁRNICO BOVINO / BEEF PRODUCT | 10.145 | 3,7% | 11.175 | 4,1% |
| REFRIGERADA SIN HUESO / REFRIGERATED BONELESS | 244.638 | 89,0% | 245.056 | 89,5% |
| REFRIGERADA CON HUESO / REFRIGERATED BONEIN | 20.137 | 7,3% | 17.550 | 6,4% |
| TOTAL | 274.920 | 100,0% | 273.780 | 100,0% |

| CARNE BOVINA / BEEF | ENE - SEP / JAN - SEP - 2014 | | ENE - SEP / JAN - SEP - 2013 | |
|--|------------------------------|---------------|------------------------------|---------------|
| | TONS. P. CANAL | % | TONS. P. CANAL | % |
| CONGELADA / FROZEN | | | | |
| CON HUESO / BONEIN | 16.933 | 7,61 | 14.437 | 6,57 |
| SIN HUESO / BONELESS | 205.532 | 92,39 | 205.458 | 93,43 |
| TOTAL CONGELADA / TOTAL FROZEN | 222.465 | 100,00 | 219.895 | 100,00 |
| ENFRIADA / CHILLED | | | | |
| CON HUESO / BONEIN | 3.204 | 7,57 | 3.113 | 7,29 |
| SIN HUESO / BONELESS | 39.106 | 92,43 | 39.598 | 92,71 |
| TOTAL ENFRIADA / TOTAL CHILLED | 42.310 | 100,00 | 42.710 | 100,00 |
| REFRIGERADA / REFRIGERATED | 264.775 | 96,31 | 262.605 | 95,92 |
| PRODUCTO CÁRNICO BOVINO / BEEF PRODUCT | 10.145 | 3,69 | 11.175 | 4,08 |
| TOTAL | 274.920 | 100,00 | 273.780 | 100,00 |

EXPORTACIONES DE CARNE BOVINA REFRIGERADA

REFRIGERATED BEEF EXPORTS

2013 - 2014

Volumen (p.embarque, p.canal*) Importe FOB e Ingreso Promedio**
 Quantity (shipped w., carcass w. *) FOB value and Average Income**

| MES / MONTH | 2014 | | | | 2013 | | | |
|----------------------------------|----------|---------|-------------|----------|----------|---------|-------------|----------|
| | PESO | PESO | MILES | USD/TON. | PESO | PESO | MILES | USD/TON. |
| | EMBARQUE | CANAL | DE | PESO | EMBARQUE | CANAL | DE | PESO |
| | SHIPPED | CARCASE | DÓLARES | CANAL | SHIPPED | CARCASE | DÓLARES | CANAL |
| | WEIGHT | WEIGHT | THOUSAND | USD/TONS | WEIGHT | WEIGHT | THOUSAND | USD/TONS |
| (TONS) | (TONS) | USD | CARC.WEIGHT | (TONS) | (TONS) | USD | CARC.WEIGHT | |
| Enero/January | 14.276 | 20.483 | 86.023 | 4.200 | 16.737 | 24.172 | 97.413 | 4.030 |
| Febrero/February | 16.206 | 23.429 | 88.838 | 3.792 | 22.410 | 32.418 | 126.727 | 3.909 |
| Marzo/March | 24.735 | 35.328 | 140.668 | 3.982 | 26.783 | 38.539 | 148.258 | 3.847 |
| Primer trimestre/First quarter | 55.217 | 79.240 | 315.529 | 3.982 | 65.929 | 95.129 | 372.398 | 3.915 |
| Abril/April | 21.904 | 31.454 | 125.214 | 3.981 | 21.402 | 30.444 | 115.761 | 3.802 |
| Mayo/May | 25.476 | 36.396 | 149.803 | 4.116 | 22.350 | 31.998 | 119.141 | 3.723 |
| Junio/June | 25.322 | 35.801 | 142.689 | 3.986 | 22.347 | 32.122 | 117.259 | 3.650 |
| Segundo trimestre/Second quarter | 72.702 | 103.652 | 417.707 | 4.030 | 66.100 | 94.563 | 352.161 | 3.724 |
| Primer semestre/First semester | 127.919 | 182.892 | 733.236 | 4.009 | 132.029 | 189.692 | 724.559 | 3.820 |
| Julio/July | 21.953 | 31.433 | 125.644 | 3.997 | 18.359 | 26.325 | 97.006 | 3.685 |
| Agosto/August | 15.150 | 21.682 | 91.396 | 4.215 | 16.976 | 24.156 | 93.458 | 3.869 |
| Septiembre/September | 20.022 | 28.768 | 121.124 | 4.210 | 15.792 | 22.432 | 85.489 | 3.811 |
| Tercer trimestre/Third quarter | 57.125 | 81.883 | 338.163 | 4.130 | 51.127 | 72.913 | 275.952 | 3.785 |
| Octubre/October | | | | | 13.203 | 18.871 | 69.214 | 3.668 |
| Noviembre/November | | | | | 20.328 | 29.276 | 117.572 | 4.016 |
| Diciembre/December | | | | | 20.246 | 29.074 | 113.355 | 3.899 |
| Cuarto trimestre/Fourth quarter | | | | | 53.777 | 77.222 | 300.141 | 3.887 |
| Segundo semestre/Second semester | | | | | 104.904 | 150.135 | 576.094 | 3.837 |
| TOTAL | 185.044 | 264.775 | 1.071.398 | 4.046 | 236.933 | 339.827 | 1.300.653 | 3.827 |

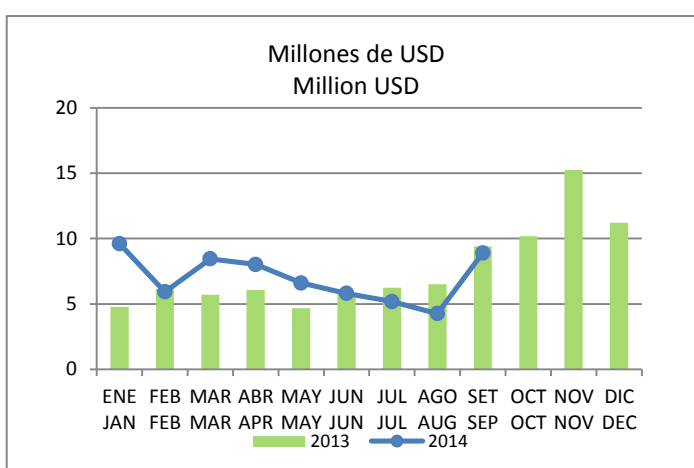
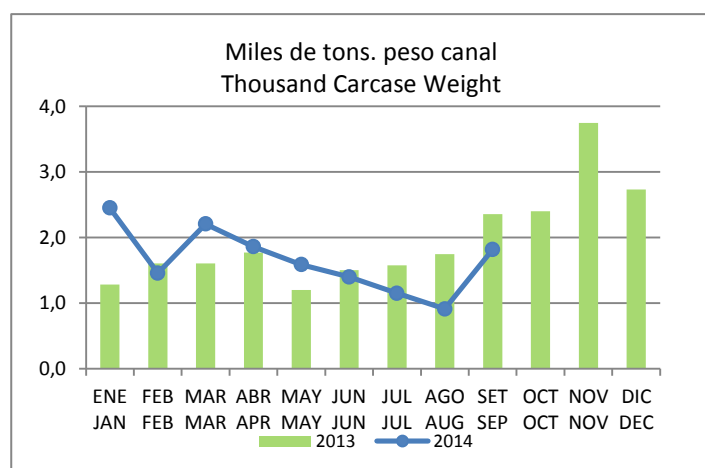
EXPORTACIONES DE CARNE OVINA

OVINE MEAT EXPORTS

2013 - 2014

Volumen (peso embarque, peso canal*) Importe FOB e Ingreso Promedio**
 Quantity (shipped weight, carcass weight*) FOB value and Average Income**

| MES / MONTH | 2014 | | | | 2013 | | | |
|----------------------------------|----------|---------|----------|----------|----------|---------|----------|----------|
| | PESO | PESO | MILES | USD/TON. | PESO | PESO | MILES | USD/TON. |
| | EMBARQUE | CANAL | DE | P.CANAL | EMBARQUE | CANAL | DE | P.CANAL |
| | SHIPPED | CARCASE | DÓLARES | USD/TONS | SHIPPED | CARCASE | DÓLARES | USD/TONS |
| | WEIGHT | WEIGHT | THOUSAND | CARCASE | WEIGHT | WEIGHT | THOUSAND | CARCASE |
| (TONS) | (TONS) | USD | WEIGHT | (TONS) | (TONS) | USD | WEIGHT | |
| Enero/January | 1.869 | 2.452 | 9.609 | 3.919 | 1.062 | 1.284 | 4.763 | 3.708 |
| Febrero/February | 1.260 | 1.459 | 5.932 | 4.066 | 1.277 | 1.606 | 6.133 | 3.820 |
| Marzo/March | 1.723 | 2.207 | 8.453 | 3.831 | 1.310 | 1.605 | 5.709 | 3.558 |
| Primer trimestre/First quarter | 4.852 | 6.118 | 23.994 | 3.922 | 3.648 | 4.495 | 16.604 | 3.694 |
| Abril/April | 1.500 | 1.861 | 8.025 | 4.313 | 1.371 | 1.774 | 6.064 | 3.419 |
| Mayo/May | 1.251 | 1.589 | 6.598 | 4.153 | 988 | 1.200 | 4.683 | 3.902 |
| Junio/June | 1.081 | 1.400 | 5.811 | 4.150 | 1.236 | 1.505 | 5.769 | 3.834 |
| Segundo trimestre/Second quarter | 3.831 | 4.850 | 20.435 | 4.213 | 3.595 | 4.478 | 16.516 | 3.688 |
| Primer semestre/First semester | 8.683 | 10.967 | 44.428 | 4.051 | 7.243 | 8.973 | 33.120 | 3.691 |
| Julio/July | 926 | 1.151 | 5.182 | 4.503 | 1.377 | 1.578 | 6.251 | 3.960 |
| Agosto/August | 762 | 913 | 4.262 | 4.668 | 1.425 | 1.748 | 6.511 | 3.724 |
| Septiembre/September | 1.465 | 1.821 | 8.898 | 4.886 | 1.819 | 2.356 | 9.402 | 3.991 |
| Tercer trimestre/Third quarter | 3.152 | 3.885 | 18.342 | 4.721 | 4.622 | 5.683 | 22.164 | 3.900 |
| Octubre/October | | | | | 2.048 | 2.403 | 10.184 | 4.239 |
| Noviembre/November | | | | | 2.813 | 3.749 | 15.262 | 4.071 |
| Diciembre/December | | | | | 2.209 | 2.731 | 11.219 | 4.108 |
| Cuarto trimestre/Fourth quarter | | | | | 7.069 | 8.882 | 36.665 | 4.128 |
| Segundo semestre/Second semester | | | | | 11.691 | 14.565 | 58.828 | 4.039 |
| TOTAL | 11.836 | 14.852 | 62.770 | 4.226 | 18.934 | 23.538 | 91.949 | 3.906 |



EXPORTACIONES POR EXPORTADOR

EXPORTS BY EXPORTER

2013 - 2014

Importe FOB (Miles de dólares)

FOB Value (Thousand dollars)

| EXPORTADOR/EXPORTER | 2014 | | | | 2013 | | | |
|--|-------------|------|-------------------|------|-------------|------|-------------------|------|
| | Septi/Septe | | Ene/Sep / Jan/Sep | | Septi/Septe | | Ene/Sep / Jan/Sep | |
| | Importe | % | Importe | % | Importe | % | Importe | % |
| ESTABLECIMIENTOS COLONIA S.A. | 8.549 | 5,31 | 131.268 | 9,54 | 6.624 | 5,73 | 74.430 | 5,87 |
| FRIGORIFICO TACUAREMBO S.A. | 15.298 | 9,51 | 103.414 | 7,51 | 5.517 | 4,77 | 88.823 | 7,00 |
| BREEDERS & PACKERS URUGUAY S.A. | 13.184 | 8,20 | 99.873 | 7,26 | 5.838 | 5,05 | 36.514 | 2,88 |
| PULSA S.A. | 12.273 | 7,63 | 97.212 | 7,06 | 8.636 | 7,47 | 108.374 | 8,55 |
| FRIGORIFICO LAS PIEDRAS S.A. | 9.797 | 6,09 | 96.071 | 6,98 | 10.985 | 9,51 | 101.368 | 7,99 |
| FRIGORIFICO SAN JACINTO-NIREA S.A. | 11.376 | 7,07 | 87.158 | 6,33 | 9.148 | 7,92 | 83.258 | 6,57 |
| FRIGORIFICO MATADERO CARRASCO S.A. | 10.053 | 6,25 | 83.255 | 6,05 | 5.422 | 4,69 | 70.181 | 5,53 |
| FRIGORIFICO CANELONES S.A. | 9.588 | 5,96 | 82.463 | 5,99 | 7.093 | 6,14 | 89.747 | 7,08 |
| CLEDINOR S.A. | 6.292 | 3,91 | 66.876 | 4,86 | 6.421 | 5,56 | 99.993 | 7,89 |
| ONTILCOR S.A. (FRIG. MATADERO PANDO) | 6.367 | 3,96 | 55.458 | 4,03 | 4.072 | 3,52 | 53.816 | 4,24 |
| BILACOR S.A. | 5.960 | 3,71 | 51.199 | 3,72 | 3.371 | 2,92 | 53.441 | 4,21 |
| LORSINAL S.A. | 6.139 | 3,82 | 47.285 | 3,44 | 4.043 | 3,50 | 43.067 | 3,40 |
| CHIADEL S.A. | 4.377 | 2,72 | 45.026 | 3,27 | 4.771 | 4,13 | 43.673 | 3,44 |
| ERSINAL S.A. | 4.936 | 3,07 | 37.830 | 2,75 | 2.470 | 2,14 | 40.913 | 3,23 |
| SIRSIL S.A. | 3.283 | 2,04 | 32.159 | 2,34 | 2.130 | 1,84 | 28.755 | 2,27 |
| INALER S.A. | 8.097 | 5,03 | 31.707 | 2,30 | 7.664 | 6,63 | 67.186 | 5,30 |
| GRANJA TRES ARROYOS URUGUAY S.A.- | 2.380 | 1,48 | 26.942 | 1,96 | 636 | 0,55 | 16.958 | 1,34 |
| FRIGORIFICO CASABLANCA S.A. | 2.714 | 1,69 | 25.872 | 1,88 | 1.663 | 1,44 | 22.289 | 1,76 |
| CARDAMA S.A. | 4.196 | 2,61 | 19.926 | 1,45 | 2.849 | 2,47 | 24.418 | 1,93 |
| FRIGOCERRO S.A. | 1.982 | 1,23 | 14.909 | 1,08 | 1.666 | 1,44 | 12.247 | 0,97 |
| COMPAÑIA INTERNACIONAL DE ALIMENTOS S.A. | | | 13.642 | 0,99 | 596 | 0,52 | 12.924 | 1,02 |
| RONDATEL S.A. | 1.029 | 0,64 | 11.862 | 0,86 | 2.878 | 2,49 | 9.177 | 0,72 |
| SUC. CARLOS SCHNECK S.A. | 1.879 | 1,17 | 10.982 | 0,80 | 583 | 0,50 | 5.477 | 0,43 |
| CLAY S.A. | 561 | 0,35 | 9.958 | 0,72 | 1.435 | 1,24 | 7.753 | 0,61 |
| HENIL S.A. | 1.292 | 0,80 | 9.067 | 0,66 | 1.542 | 1,33 | 11.079 | 0,87 |
| BALDONY S.A. | | | 9.034 | 0,66 | | | | |
| BAMIDAL S.A. | 955 | 0,59 | 8.161 | 0,59 | 288 | 0,25 | 5.143 | 0,41 |
| SOMICAR S.A. | 1.170 | 0,73 | 7.959 | 0,58 | 415 | 0,36 | 4.851 | 0,38 |
| COPAYAN S.A. | 1.132 | 0,70 | 7.491 | 0,54 | 816 | 0,71 | 3.415 | 0,27 |
| BERDICK S.A. | 991 | 0,62 | 7.109 | 0,52 | 819 | 0,71 | 6.269 | 0,49 |
| SAREL S.A. | 258 | 0,16 | 5.190 | 0,38 | 141 | 0,12 | 4.188 | 0,33 |
| LOMA BONITA S.A. | | | 3.929 | 0,29 | 334 | 0,29 | 3.498 | 0,28 |
| AGROINDUSTRIAL DEL ESTE S.A. | 619 | 0,38 | 3.586 | 0,26 | 350 | 0,30 | 1.926 | 0,15 |
| OFERAN S.A. | 494 | 0,31 | 2.797 | 0,20 | 661 | 0,57 | 4.088 | 0,32 |
| FEBANOR S.A. | | | 2.745 | 0,20 | 333 | 0,29 | 333 | 0,03 |
| EREL S.A. | 403 | 0,25 | 2.594 | 0,19 | 205 | 0,18 | 3.089 | 0,24 |
| DESPRO S.A. | 232 | 0,14 | 2.543 | 0,18 | 53 | 0,05 | 1.622 | 0,13 |
| SIDERCOL S.A. | 278 | 0,17 | 2.507 | 0,18 | 138 | 0,12 | 948 | 0,07 |
| ALIMENTOS ORGANICOS URUGUAYOS S.A. | 295 | 0,18 | 2.450 | 0,18 | 62 | 0,05 | 948 | 0,07 |
| PRADERA FELIZ S.A. | | | 2.435 | 0,18 | | | | |
| KROL S.A. | 400 | 0,25 | 2.250 | 0,16 | 251 | 0,22 | 1.905 | 0,15 |

EXPORTACIONES POR EXPORTADOR

EXPORTS BY EXPORTER

2013 - 2014

Importe FOB (Miles de dólares)

FOB Value (Thousand dollars)

| EXPORTADOR/EXPORTER | 2014 | | | | 2013 | | | |
|--|-------------|--------|-------------------|--------|-------------|--------|-------------------|--------|
| | Septi/Septe | | Ene/Sep / Jan/Sep | | Septi/Septe | | Ene/Sep / Jan/Sep | |
| | Importe | % | Importe | % | Importe | % | Importe | % |
| GRINSOL S.A. | 84 | 0,05 | 1.908 | 0,14 | 276 | 0,24 | 2.237 | 0,18 |
| UREXPORT S.A. | 129 | 0,08 | 1.594 | 0,12 | 197 | 0,17 | 1.584 | 0,12 |
| YARUS S.A. | 122 | 0,08 | 1.382 | 0,10 | 195 | 0,17 | 3.622 | 0,29 |
| SAPOL S.A. | | | 1.381 | 0,10 | 1.678 | 1,45 | 4.736 | 0,37 |
| PROBIOMONT S.A. | | | 854 | 0,06 | | | 456 | 0,04 |
| TECNOBLEN S.A. | 475 | 0,30 | 842 | 0,06 | | | 792 | 0,06 |
| LENCINA SOCIEDAD COLECTIVA | 259 | 0,16 | 760 | 0,06 | | | 334 | 0,03 |
| DRASVEL S.A. | 509 | 0,32 | 723 | 0,05 | | | | |
| COOP.AG. LTDA. DE PROD. Y COM. AVICOLA | 185 | 0,11 | 684 | 0,05 | | | | |
| CVF LTDA | 161 | 0,10 | 491 | 0,04 | | | 300 | 0,02 |
| DAMAXTIR S.A. | | | 309 | 0,02 | | | 2.109 | 0,17 |
| USINEL S.A. | | | 256 | 0,02 | | | 198 | 0,02 |
| SYNTEX URUGUAYA S.A. | | | 238 | 0,02 | 190 | 0,16 | 855 | 0,07 |
| TRIPUY S.A. | | | 210 | 0,02 | | | 119 | 0,01 |
| CUAREIM DEL NORTE SRL | 62 | 0,04 | 169 | 0,01 | 41 | 0,04 | 494 | 0,04 |
| BARRACA RODO SRL | | | 139 | 0,01 | 20 | 0,02 | 181 | 0,01 |
| KARELOY S.A. | 31 | 0,02 | 135 | 0,01 | | | 83 | 0,01 |
| JORMAR LTDA | 9 | 0,01 | 85 | 0,01 | 41 | 0,04 | 115 | 0,01 |
| VELTOMAR S.A. | | | 47 | (.) | | | 26 | (.) |
| CARNE ABERDEEN ANGUS DEL URUGUAY S.A. | | | 34 | (.) | | | | |
| DRINAL S.A. | | | | | | | 41 | (.) |
| KIMAHY S.A. | | | | | | | 902 | 0,07 |
| FADICAR S.A. | | | | | | | 55 | (.) |
| SOUTH AMERICA PROTEINS S.A. | | | | | | | 715 | 0,06 |
| TOTAL | 160.853 | 100,00 | 1.376.434 | 100,00 | 115.556 | 100,00 | 1.268.040 | 100,00 |

EXPORTACIONES POR PRODUCTO

EXPORTS BY PRODUCT

2013 2014

Volumen (Toneladas peso embarque)

Quantity (Tons shipped weight)

| PRODUCTO/PRODUCT | | 2014 | | 2013 | |
|------------------|---|---------|----------------------|---------|----------------------|
| | | Sep/Sep | Ene/Sep / Jan/Sep | Sep/Sep | Ene/Sep / Jan/Sep |
| * | CARNE BOVINA/BEEF | 20.381 | 188.331 | 16.057 | 186.758 |
| ** | REFRIGERADA/REFRIGERATED | 20.022 | 185.044 | 15.792 | 183.156 |
| *** | CONGELADA/FROZEN | 16.737 | 154.659 | 13.389 | 152.537 |
| | CUARTO O CORTE DEL DELANTERO CON HUESO | 1.373 | 13.843 | 707 | 8.450 |
| | BONEIN FOREQUARTER OR FOREQUARTER CUT | | | | |
| | CUARTO O CORTE DEL TRASERO CON HUESO | 201 | 699 | 17 | 403 |
| | BONEIN HINDQUARTER OR HINDQUARTER CUT | | | | |
| | CANAL, MEDIA CANAL, CUARTO COMPENSADO, CUARTO COMBINADO CON HUESO | 45 | 413 | 1.017 | 4.399 |
| | BONEIN CARCASE, SIDE, COMPENSATED QUARTERS, COMBINED QUARTERS | | | | |
| | OTRAS CARNES CON HUESO | 154 | 1.565 | 11 | 833 |
| | OTHER BONEIN MEATS | | | | |
| | CUARTO O CORTE DEL DELANTERO SIN HUESO | 6.027 | 56.438 | 4.753 | 56.081 |
| | BONELESS FOREQUARTER OR FOREQUARTER CUT | | | | |
| | CUARTO O CORTE DEL TRASERO SIN HUESO | 3.578 | 32.641 | 2.482 | 34.689 |
| | BONELESS HINDQUARTER OR HINDQUARTER CUT | | | | |
| | CANAL, MEDIA CANAL, CUARTO COMPENSADO, CUARTO COMBINADO SIN HUESO | 2.395 | 20.371 | 1.677 | 17.738 |
| | BONELESS CARCASE, SIDE, COMPENSATED QUARTERS, COMBINED QUARTERS | | | | |
| | OTRAS CARNES SIN HUESO | 256 | 2.946 | 444 | 3.097 |
| | OTHER BONELESS MEATS | | | | |
| | CARNES CHICAS | 2.709 | 25.742 | 2.283 | 26.848 |
| | GENERIC TRIMMINGS | | | | |
| *** | ENFRIADA/CHILLED | 3.284 | 30.385 | 2.403 | 30.619 |
| | CUARTO O CORTE DEL DELANTERO CON HUESO | 185 | 1.712 | 138 | 2.053 |
| | BONEIN FOREQUARTER OR FOREQUARTER CUT | | | | |
| | CANAL, MEDIA CANAL, CUARTO COMPENSADO, CUARTO COMBINADO CON HUESO | | 792 | | |
| | BONEIN CARCASE, SIDE, COMPENSATED QUARTERS, COMBINED QUARTERS | | | | |
| | OTRAS CARNES CON HUESO | 78 | 656 | 44 | 1.017 |
| | OTHER BONEIN MEATS | | | | |
| | CUARTO O CORTE DEL DELANTERO SIN HUESO | 262 | 1.932 | 214 | 1.433 |
| | BONELESS FOREQUARTER OR FOREQUARTER CUT | | | | |
| | CUARTO O CORTE DEL TRASERO SIN HUESO | 1.215 | 12.484 | 768 | 12.631 |
| | BONELESS HINDQUARTER OR HINDQUARTER CUT | | | | |
| | CANAL, MEDIA CANAL, CUARTO COMPENSADO, CUARTO COMBINADO SIN HUESO | 1.544 | 12.801 | 1.239 | 13.478 |
| | BONELESS CARCASE, SIDE, COMPENSATED QUARTERS, COMBINED QUARTERS | | | | |
| | OTRAS CARNES SIN HUESO | 1 | 9 | 1 | 8 |
| | OTHER BONELESS MEATS | | | | |
| ** | PRODUCTO CARNICO BOVINO/BEEF PRODUCT | 359 | 3.287 | 265 | 3.602 |
| *** | CONSERVA/PRESERVE | 276 | 2.465 | 163 | 2.553 |
| | GENERIC | 276 | 2.465 | 163 | 2.553 |
| | GENERIC | | | | |
| *** | HUMEDAD CONTROLADA/CONTROLLED MOISTURE | 84 | 485 | 34 | 564 |
| | GENERIC | 84 | 485 | 34 | 564 |
| | GENERIC | | | | |

EXPORTACIONES POR PRODUCTO

EXPORTS BY PRODUCT

2013 2014

Volumen (Toneladas peso embarque)

Quantity (Tons shipped weight)

| PRODUCTO/PRODUCT | 2014 | | 2013 | |
|------------------|---------|----------------------|---------|----------------------|
| | Sep/Sep | Ene/Sep / Jan/Sep | Sep/Sep | Ene/Sep / Jan/Sep |
| *** | | 154 | | 219 |
| | | 154 | | 219 |
| | | | | |
| * | 1.465 | 11.836 | 1.819 | 11.865 |
| ** | 1.465 | 11.836 | 1.819 | 11.865 |
| *** | 1.360 | 10.806 | 1.642 | 9.808 |
| | 469 | 3.088 | 381 | 2.644 |
| | | | | |
| | 212 | 1.172 | 106 | 924 |
| | | | | |
| | 257 | 2.978 | 563 | 3.057 |
| | | | | |
| | 148 | 1.245 | 169 | 1.075 |
| | | | | |
| | 7 | 39 | | 28 |
| | | | | |
| | 212 | 1.836 | 378 | 1.695 |
| | | | | |
| | | 9 | | 34 |
| | | | | |
| | 55 | 425 | 27 | 317 |
| | | | | |
| *** | 105 | 1.030 | 177 | 2.057 |
| | (.) | (.) | | |
| | | | | |
| | 105 | 1.013 | 174 | 2.024 |
| | | | | |
| | (.) | 17 | 4 | 32 |
| | | | | |
| * | 323 | 4.335 | 485 | 3.333 |
| ** | 323 | 4.335 | 485 | 3.333 |
| *** | 208 | 3.070 | 359 | 2.147 |
| | 171 | 2.302 | 312 | 1.762 |
| | | | | |
| | 37 | 327 | 16 | 22 |
| | | | | |
| *** | 115 | 1.265 | 126 | 1.186 |
| | | 2 | | |
| | | | | |
| | 5 | 28 | 1 | 77 |
| | | | | |
| | 110 | 1.235 | 125 | 1.109 |
| | | | | |

EXPORTACIONES POR PRODUCTO

EXPORTS BY PRODUCT

2013 2014

Volumen (Toneladas peso embarque)

Quantity (Tons shipped weight)

| PRODUCTO/PRODUCT | | 2014 | | 2013 | |
|------------------|---|---------|----------------------|---------|----------------------|
| | | Sep/Sep | Ene/Sep / Jan/Sep | Sep/Sep | Ene/Sep / Jan/Sep |
| * | CARNE DE AVE/POULTRY MEAT | 1.221 | 12.838 | 261 | 8.562 |
| ** | REFRIGERADA/REFRIGERATED | 1.221 | 12.838 | 261 | 8.562 |
| *** | CONGELADA/FROZEN | 1.221 | 12.838 | 261 | 8.562 |
| | CUARTO O CORTE DEL DELANTERO CON HUESO | 8 | 60 | | 91 |
| | BONEIN FOREQUARTER OR FOREQUARTER CUT | | | | |
| | CANAL, MEDIA CANAL, CUARTO COMPENSADO, CUARTO COMBINADO CON HUESO | 1.203 | 12.669 | 234 | 8.305 |
| | BONEIN CARCASE, SIDE, COMPENSATED QUARTERS, COMBINED QUARTERS | | | | |
| | CARNES CHICAS | 10 | 77 | 22 | 109 |
| | GENERIC TRIMMINGS | | | | |
| * | CARNE DE ANIMALES DE CAZA MENOR/SMALL GAME MEAT | 59 | 151 | 54 | 197 |
| ** | REFRIGERADA/REFRIGERATED | 59 | 151 | 54 | 197 |
| *** | CONGELADA/FROZEN | 59 | 151 | 54 | 197 |
| | CANAL, MEDIA CANAL, CUARTO COMPENSADO, CUARTO COMBINADO CON HUESO | 48 | 127 | 45 | 153 |
| | BONEIN CARCASE, SIDE, COMPENSATED QUARTERS, COMBINED QUARTERS | | | | |
| | CANAL, MEDIA CANAL, CUARTO COMPENSADO, CUARTO COMBINADO SIN HUESO | 12 | 25 | 9 | 44 |
| | BONELESS CARCASE, SIDE, COMPENSATED QUARTERS, COMBINED QUARTERS | | | | |
| * | MENUDENCIAS/OFFALS | 2.729 | 21.801 | 1.786 | 20.246 |
| ** | BOVINAS/BEEF | 2.588 | 20.547 | 1.691 | 19.595 |
| *** | CONGELADAS/FROZEN | 2.586 | 20.542 | 1.685 | 19.571 |
| *** | ENFRIADAS/CHILLED | 2 | 2 | | |
| ** | OVINAS/OVINE | 125 | 680 | 92 | 469 |
| *** | CONGELADAS/FROZEN | 125 | 680 | 92 | 469 |
| ** | PORCINAS/PORK | | 6 | | 9 |
| *** | CONGELADAS/FROZEN | | 6 | | 9 |
| ** | DE AVE/POULTRY | 17 | 88 | | 89 |
| *** | CONGELADAS/FROZEN | 17 | 88 | | 89 |
| * | SUBPRODUCTO RESIDUAL COMESTIBLE/REMAINING EDIBLE BYPRODUCT | 3.935 | 24.623 | 1.364 | 10.767 |
| ** | BOVINO/BEEF | 3.719 | 23.243 | 1.075 | 9.168 |
| *** | CONGELADO/FROZEN | 3.719 | 23.243 | 1.075 | 9.168 |
| *** | COCIDO-CONGELADO/COOKED-FROZEN | | | | (.) |
| ** | OVINO/OVINE | 123 | 713 | 77 | 603 |
| *** | CONGELADO/FROZEN | 123 | 713 | 77 | 603 |
| ** | EQUINO/HORSE | (.) | 6 | | (.) |
| *** | CONGELADO/FROZEN | (.) | 6 | | (.) |
| ** | DE AVE/POULTRY | 93 | 661 | 212 | 996 |
| *** | GENÉRICO/GENERIC | 81 | 594 | 162 | 605 |
| *** | CONGELADO/FROZEN | 12 | 67 | 50 | 390 |
| * | SUBPRODUCTO PRIMARIO PARA USO INDUSTRIAL/PRIMARY BYPRODUCT FOR INDUSTRIAL USE | 5.401 | 35.638 | 6.303 | 44.242 |
| ** | GENÉRICO/GENERIC | 16 | 16 | | |
| *** | GENÉRICO/GENERIC | 16 | 16 | | |
| ** | BOVINO/BEEF | 5.343 | 35.244 | 6.205 | 43.765 |
| *** | GENÉRICO/GENERIC | 5.112 | 32.630 | 5.904 | 41.026 |
| *** | CONGELADO/FROZEN | 231 | 2.614 | 301 | 2.739 |

EXPORTACIONES POR PRODUCTO

EXPORTS BY PRODUCT

2013 2014

Volumen (Toneladas peso embarque)

Quantity (Tons shipped weight)

| PRODUCTO/PRODUCT | | 2014 | | 2013 | |
|------------------|--|---------|----------------------|---------|----------------------|
| | | Sep/Sep | Ene/Sep / Jan/Sep | Sep/Sep | Ene/Sep / Jan/Sep |
| ** | OVINO/OVINE | 23 | 235 | 98 | 365 |
| *** | GENÉRICO/GENERIC | 23 | 235 | 98 | 365 |
| ** | EQUINO/HORSE | | 82 | | 92 |
| *** | GENÉRICO/GENERIC | | 82 | | 71 |
| *** | CONGELADO/FROZEN | | | | 21 |
| ** | DE CAZA MENOR/SMALL GAME | 18 | 60 | | 19 |
| *** | GENÉRICO/GENERIC | 18 | 60 | | 19 |
| * | SUBPRODUCTO INDUSTRIALIZADO/INDUSTRIALIZED BYPRODUCT | 3.492 | 35.079 | 2.917 | 38.667 |
| ** | GENÉRICO/GENERIC | 2.980 | 31.581 | 2.482 | 35.126 |
| *** | GENÉRICO/GENERIC | 2.980 | 31.581 | 2.482 | 35.126 |
| ** | BOVINO/BEEF | 469 | 3.345 | 390 | 3.187 |
| *** | GENÉRICO/GENERIC | 13 | 77 | 5 | 72 |
| *** | HUMEDAD CONTROLADA/CONTROLLED MOISTURE | 455 | 3.268 | 385 | 3.114 |
| ** | OVINO/OVINE | 29 | 114 | 1 | 146 |
| *** | CONGELADO/FROZEN | 27 | 80 | | 130 |
| *** | HUMEDAD CONTROLADA/CONTROLLED MOISTURE | 1 | 34 | 1 | 16 |
| ** | EQUINO/HORSE | 14 | 29 | 44 | 133 |
| *** | CONGELADO/FROZEN | 12 | 12 | 22 | 92 |
| *** | HUMEDAD CONTROLADA/CONTROLLED MOISTURE | 2 | 17 | 22 | 41 |
| ** | PORCINO/PORK | | 10 | | 76 |
| *** | HUMEDAD CONTROLADA/CONTROLLED MOISTURE | | 10 | | 76 |
| * | PRODUCTO CARNICO PARA ALIMENTACION ANIMAL/MEAT PRODUCT FOR ANIMAL FODDAGE | 85 | 855 | 27 | 436 |
| ** | GENÉRICO/GENERIC | 85 | 855 | 27 | 436 |
| *** | GENÉRICO/GENERIC | 85 | 855 | 27 | 401 |
| *** | CONGELADO/FROZEN | | | | 35 |
| | TOTAL | 39.091 | 335.487 | 31.074 | 325.072 |

EXPORTACIONES TOTALES DEL SECTOR CÁRNICO - POR DESTINO

TOTAL MEAT EXPORTS - BY DESTINATION

2013 - 2014

Importe FOB (Miles de dólares)

FOB Value (Thousand dollars)

| DESTINO/DESTINATION | 2014 | | 2013 | |
|---|---------|----------------------|---------|----------------------|
| | Sep/Sep | Ene/Sep / Jan/Sep | Sep/Sep | Ene/Sep / Jan/Sep |
| AFGANISTÁN/AFGHANISTAN | | 109 | | 240 |
| CARNE DE AVE / POULTRY MEAT | | 109 | | 240 |
| ALBANIA/ALBANIA | | | | 20 |
| CARNE BOVINA / BEEF | | | | 20 |
| ALEMANIA/GERMANY | 9.798 | 93.159 | 7.697 | 71.089 |
| CARNE BOVINA / BEEF | 9.098 | 84.121 | 5.927 | 61.389 |
| CARNE OVINA / OVINE MEAT | 296 | 3.691 | 816 | 3.081 |
| CARNE DE ANIMALES DE CAZA MENOR / SMALL GAME MEAT | | 83 | 103 | 308 |
| MENUDENCIAS / OFFALS | | | | 83 |
| SUBPRODUCTO PRIMARIO PARA USO INDUSTRIAL / PRIMARY BYPRODUCT FOR INDUSTRIAL USE | 92 | 1.191 | 213 | 1.301 |
| SUBPRODUCTO INDUSTRIALIZADO / INDUSTRIALIZED BYPRODUCT | 311 | 4.073 | 638 | 4.928 |
| ANGOLA/ANGOLA | | 490 | 36 | 761 |
| CARNE BOVINA / BEEF | | 97 | | 547 |
| CARNE DE AVE / POULTRY MEAT | | 359 | | 114 |
| MENUDENCIAS / OFFALS | | 33 | 36 | 100 |
| ARGELIA/ALGERIA | | 599 | | |
| CARNE BOVINA / BEEF | | 27 | | |
| CARNE OVINA / OVINE MEAT | | 376 | | |
| SUBPRODUCTO RESIDUAL COMESTIBLE / REMAINING EDIBLE BYPRODUCT | | 196 | | |
| ARGENTINA/ARGENTINA | 455 | 4.049 | 607 | 5.835 |
| SUBPRODUCTO PRIMARIO PARA USO INDUSTRIAL / PRIMARY BYPRODUCT FOR INDUSTRIAL USE | | 119 | 19 | 550 |
| SUBPRODUCTO INDUSTRIALIZADO / INDUSTRIALIZED BYPRODUCT | 455 | 3.929 | 587 | 5.284 |
| BAHAMAS/BAHAMAS | | | | 95 |
| MENUDENCIAS / OFFALS | | | | 95 |
| BARBADOS/BARBADOS | 134 | 2.264 | 81 | 2.087 |
| CARNE BOVINA / BEEF | 134 | 2.264 | 81 | 2.087 |
| BERMUDAS/BERMUDA | | | | 51 |
| MENUDENCIAS / OFFALS | | | | 51 |
| BIELORRUSIA/BELARUS | 91 | 621 | | 344 |
| CARNE BOVINA / BEEF | | 65 | | |
| CARNE EQUINA / HORSE MEAT | | 139 | | 18 |
| MENUDENCIAS / OFFALS | | | | 8 |
| SUBPRODUCTO INDUSTRIALIZADO / INDUSTRIALIZED BYPRODUCT | 91 | 417 | | 317 |
| BOSNIA Y HERZEGOVINA/BOSNIA AND HERZEGOVINA | | | | 261 |
| CARNE BOVINA / BEEF | | | | 261 |
| BRASIL/BRAZIL | 12.095 | 96.636 | 6.075 | 87.972 |
| CARNE BOVINA / BEEF | 6.808 | 63.379 | 2.921 | 59.115 |
| CARNE OVINA / OVINE MEAT | 5.007 | 31.588 | 3.046 | 26.003 |
| MENUDENCIAS / OFFALS | | 108 | 108 | 416 |
| SUBPRODUCTO RESIDUAL COMESTIBLE / REMAINING EDIBLE BYPRODUCT | | 14 | | 65 |
| SUBPRODUCTO PRIMARIO PARA USO INDUSTRIAL / PRIMARY BYPRODUCT FOR INDUSTRIAL USE | | | | 1.389 |
| SUBPRODUCTO INDUSTRIALIZADO / INDUSTRIALIZED BYPRODUCT | 281 | 1.546 | | 985 |

EXPORTACIONES TOTALES DEL SECTOR CÁRNICO - POR DESTINO

TOTAL MEAT EXPORTS - BY DESTINATION

2013 - 2014

Importe FOB (Miles de dólares)

FOB Value (Thousand dollars)

| DESTINO/DESTINATION | 2014 | | 2013 | |
|---|---------|----------------------|---------|----------------------|
| | Sep/Sep | Ene/Sep / Jan/Sep | Sep/Sep | Ene/Sep / Jan/Sep |
| BÉLGICA/BELGIUM | 705 | 5.934 | 181 | 3.705 |
| CARNE BOVINA / BEEF | | 1.037 | | 616 |
| CARNE OVINA / OVINE MEAT | | 209 | | |
| CARNE EQUINA / HORSE MEAT | 336 | 3.585 | 181 | 3.019 |
| CARNE DE ANIMALES DE CAZA MENOR / SMALL GAME MEAT | 359 | 949 | | |
| SUBPRODUCTO PRIMARIO PARA USO INDUSTRIAL / PRIMARY BYPRODUCT FOR INDUSTRIAL USE | 10 | 154 | | 70 |
| CANADÁ/CANADA | 7.637 | 47.871 | 1.208 | 33.604 |
| CARNE BOVINA / BEEF | 7.637 | 47.325 | 846 | 32.564 |
| CARNE OVINA / OVINE MEAT | | 546 | 362 | 1.040 |
| CHILE/CHILE | 2.590 | 30.976 | 2.434 | 56.894 |
| CARNE BOVINA / BEEF | 2.590 | 30.815 | 2.434 | 56.817 |
| SUBPRODUCTO PRIMARIO PARA USO INDUSTRIAL / PRIMARY BYPRODUCT FOR INDUSTRIAL USE | | 25 | | 50 |
| SUBPRODUCTO INDUSTRIALIZADO / INDUSTRIALIZED BYPRODUCT | | 89 | | |
| PRODUCTO CÁRNICO PARA ALIMENTACION ANIMAL / MEAT PRODUCT FOR ANIMAL FODDAGE | | 47 | | 26 |
| CHIPRE/CYPRUS | | | 169 | 512 |
| CARNE BOVINA / BEEF | | | 169 | 512 |
| COLOMBIA/COLOMBIA | 120 | 2.115 | 82 | 2.471 |
| CARNE BOVINA / BEEF | 36 | 399 | 46 | 386 |
| SUBPRODUCTO INDUSTRIALIZADO / INDUSTRIALIZED BYPRODUCT | 84 | 1.715 | 36 | 2.085 |
| COREA DEL SUR/KOREA, REPUBLIC OF | 326 | 1.152 | 228 | 1.343 |
| CARNE BOVINA / BEEF | 326 | 1.139 | 213 | 1.296 |
| MENUDENCIAS / OFFALS | | 13 | 15 | 47 |
| CROACIA/CROATIA | | | | 651 |
| CARNE BOVINA / BEEF | | | | 651 |
| CUBA/CUBA | | | | 25 |
| CARNE BOVINA / BEEF | | | | 25 |
| DINAMARCA/DENMARK | 233 | 2.501 | 232 | 2.014 |
| CARNE BOVINA / BEEF | 233 | 2.385 | 232 | 2.011 |
| CARNE OVINA / OVINE MEAT | | 116 | | |
| CARNE EQUINA / HORSE MEAT | | | | 3 |
| ECUADOR/ECUADOR | 118 | 669 | 193 | 690 |
| CARNE BOVINA / BEEF | 118 | 547 | 160 | 513 |
| CARNE OVINA / OVINE MEAT | | 84 | 33 | 167 |
| MENUDENCIAS / OFFALS | | 9 | | 9 |
| SUBPRODUCTO RESIDUAL COMESTIBLE / REMAINING EDIBLE BYPRODUCT | | 30 | | |
| EGIPTO/EGYPT | | 118 | | 220 |
| SUBPRODUCTO INDUSTRIALIZADO / INDUSTRIALIZED BYPRODUCT | | 118 | | 220 |
| EMIRATOS ÁRABES UNIDOS/UNITED ARAB EMIRATES | | 390 | 55 | 239 |
| CARNE BOVINA / BEEF | | | 45 | 57 |
| CARNE OVINA / OVINE MEAT | | 390 | | 167 |
| MENUDENCIAS / OFFALS | | | 8 | 8 |
| SUBPRODUCTO RESIDUAL COMESTIBLE / REMAINING EDIBLE BYPRODUCT | | | 2 | 6 |
| ESPAÑA/SPAIN | 1.774 | 20.001 | 1.904 | 18.102 |

EXPORTACIONES TOTALES DEL SECTOR CÁRNICO - POR DESTINO

TOTAL MEAT EXPORTS - BY DESTINATION

2013 - 2014

Importe FOB (Miles de dólares)

FOB Value (Thousand dollars)

| DESTINO/DESTINATION | 2014 | | 2013 | |
|---|---------|----------------------|---------|----------------------|
| | Sep/Sep | Ene/Sep / Jan/Sep | Sep/Sep | Ene/Sep / Jan/Sep |
| CARNE BOVINA / BEEF | 1.508 | 18.930 | 1.860 | 16.951 |
| CARNE OVINA / OVINE MEAT | | 60 | | 4 |
| MENUDENCIAS / OFFALS | | 213 | | 709 |
| SUBPRODUCTO INDUSTRIALIZADO / INDUSTRIALIZED BYPRODUCT | 266 | 799 | 44 | 438 |
| ESTADOS UNIDOS/UNITED STATES | 18.423 | 153.207 | 9.698 | 130.571 |
| CARNE BOVINA / BEEF | 17.872 | 149.644 | 9.661 | 129.338 |
| CARNE OVINA / OVINE MEAT | 129 | 602 | | |
| SUBPRODUCTO PRIMARIO PARA USO INDUSTRIAL / PRIMARY BYPRODUCT FOR INDUSTRIAL USE | | 72 | | 101 |
| SUBPRODUCTO INDUSTRIALIZADO / INDUSTRIALIZED BYPRODUCT | 128 | 438 | | 230 |
| PRODUCTO CARNICO PARA ALIMENTACION ANIMAL / MEAT PRODUCT FOR ANIMAL FODDAGE | 295 | 2.450 | 37 | 902 |
| FEDERACION RUSA/RUSSIAN FEDERATION | 16.177 | 119.249 | 6.276 | 102.715 |
| CARNE BOVINA / BEEF | 11.772 | 86.697 | 3.541 | 80.919 |
| CARNE OVINA / OVINE MEAT | 23 | 1.117 | 57 | 1.139 |
| CARNE EQUINA / HORSE MEAT | 735 | 8.692 | 608 | 4.140 |
| CARNE DE AVE / POULTRY MEAT | 13 | 83 | | 44 |
| MENUDENCIAS / OFFALS | 2.613 | 17.369 | 1.203 | 12.218 |
| SUBPRODUCTO RESIDUAL COMESTIBLE / REMAINING EDIBLE BYPRODUCT | 412 | 1.521 | 138 | 618 |
| SUBPRODUCTO INDUSTRIALIZADO / INDUSTRIALIZED BYPRODUCT | 609 | 3.769 | 729 | 3.637 |
| FINLANDIA/FINLAND | 616 | 2.991 | 4.429 | 11.960 |
| CARNE BOVINA / BEEF | 616 | 2.813 | 377 | 1.797 |
| CARNE OVINA / OVINE MEAT | | 178 | 60 | 224 |
| SUBPRODUCTO PRIMARIO PARA USO INDUSTRIAL / PRIMARY BYPRODUCT FOR INDUSTRIAL USE | | | 3.993 | 9.939 |
| FRANCIA/FRANCE | 638 | 9.128 | 1.422 | 10.567 |
| CARNE BOVINA / BEEF | 142 | 3.562 | 202 | 4.536 |
| CARNE OVINA / OVINE MEAT | 190 | 1.858 | 742 | 2.224 |
| CARNE EQUINA / HORSE MEAT | 170 | 2.852 | 466 | 3.466 |
| CARNE DE ANIMALES DE CAZA MENOR / SMALL GAME MEAT | 125 | 125 | | |
| MENUDENCIAS / OFFALS | | | | (.) |
| SUBPRODUCTO PRIMARIO PARA USO INDUSTRIAL / PRIMARY BYPRODUCT FOR INDUSTRIAL USE | 12 | 119 | 11 | 112 |
| SUBPRODUCTO INDUSTRIALIZADO / INDUSTRIALIZED BYPRODUCT | | 612 | | 229 |
| GABÓN/GABON | | 172 | | 68 |
| CARNE OVINA / OVINE MEAT | | 172 | | |
| MENUDENCIAS / OFFALS | | | | 68 |
| GEORGIA/GEORGIA | 125 | 414 | | 2 |
| CARNE BOVINA / BEEF | 125 | 411 | | 2 |
| MENUDENCIAS / OFFALS | | 3 | | |
| GHANA/GHANA | | | | 71 |
| MENUDENCIAS / OFFALS | | | | 71 |
| GUINEA ECUATORIAL/EQUATORIAL GUINEA | | | | 111 |
| CARNE OVINA / OVINE MEAT | | | | 68 |
| CARNE DE AVE / POULTRY MEAT | | | | 42 |
| HAÍ/HAITI | | | | 19 |

EXPORTACIONES TOTALES DEL SECTOR CÁRNICO - POR DESTINO

TOTAL MEAT EXPORTS - BY DESTINATION

2013 - 2014

Importe FOB (Miles de dólares)

FOB Value (Thousand dollars)

| DESTINO/DESTINATION | 2014 | | 2013 | |
|---|---------|----------------------|---------|----------------------|
| | Sep/Sep | Ene/Sep / Jan/Sep | Sep/Sep | Ene/Sep / Jan/Sep |
| SUBPRODUCTO RESIDUAL COMESTIBLE / REMAINING EDIBLE BYPRODUCT | | | | 19 |
| INDIA/INDIA | 385 | 385 | | |
| SUBPRODUCTO PRIMARIO PARA USO INDUSTRIAL / PRIMARY BYPRODUCT FOR INDUSTRIAL USE | 385 | 385 | | |
| IRLANDA/IRELAND | | | | 278 |
| CARNE BOVINA / BEEF | | | | 278 |
| ISLA MADEIRA/MADEIRA ISLAND | | 1.264 | 453 | 1.122 |
| CARNE BOVINA / BEEF | | 1.264 | 453 | 1.122 |
| ISLAS CANARIAS/CANARY ISLANDS | 1.427 | 14.498 | 806 | 13.890 |
| CARNE BOVINA / BEEF | 1.427 | 14.498 | 806 | 13.861 |
| MENUDENCIAS / OFFALS | | | | 29 |
| ISRAEL/ISRAEL | 13.281 | 112.116 | 9.005 | 114.339 |
| CARNE BOVINA / BEEF | 12.877 | 109.214 | 8.806 | 110.339 |
| MENUDENCIAS / OFFALS | 238 | 1.702 | 124 | 2.646 |
| SUBPRODUCTO RESIDUAL COMESTIBLE / REMAINING EDIBLE BYPRODUCT | 166 | 1.093 | 75 | 1.210 |
| SUBPRODUCTO INDUSTRIALIZADO / INDUSTRIALIZED BYPRODUCT | | 107 | | 144 |
| ITALIA/ITALY | 5.532 | 40.462 | 3.619 | 45.359 |
| CARNE BOVINA / BEEF | 4.704 | 27.553 | 2.700 | 39.718 |
| CARNE OVINA / OVINE MEAT | | | | 192 |
| CARNE EQUINA / HORSE MEAT | | | | 271 |
| MENUDENCIAS / OFFALS | 91 | 91 | 25 | 191 |
| SUBPRODUCTO PRIMARIO PARA USO INDUSTRIAL / PRIMARY BYPRODUCT FOR INDUSTRIAL USE | | 7.271 | | |
| SUBPRODUCTO INDUSTRIALIZADO / INDUSTRIALIZED BYPRODUCT | 737 | 5.547 | 894 | 4.987 |
| JAPÓN/JAPAN | 404 | 1.585 | 80 | 1.122 |
| CARNE BOVINA / BEEF | 201 | 730 | 1 | 236 |
| MENUDENCIAS / OFFALS | | | | 59 |
| SUBPRODUCTO RESIDUAL COMESTIBLE / REMAINING EDIBLE BYPRODUCT | | | | (.) |
| SUBPRODUCTO INDUSTRIALIZADO / INDUSTRIALIZED BYPRODUCT | 203 | 855 | 78 | 827 |
| JORDANIA/JORDAN | 579 | 3.626 | 221 | 1.159 |
| CARNE BOVINA / BEEF | | | | 161 |
| CARNE OVINA / OVINE MEAT | 579 | 3.597 | 162 | 775 |
| MENUDENCIAS / OFFALS | | 28 | | 30 |
| SUBPRODUCTO RESIDUAL COMESTIBLE / REMAINING EDIBLE BYPRODUCT | | | 59 | 194 |
| KAZAJISTÁN/KAZAKHSTAN | 389 | 1.492 | 292 | 2.938 |
| CARNE BOVINA / BEEF | 272 | 327 | | 1.010 |
| CARNE OVINA / OVINE MEAT | | 41 | | 70 |
| CARNE EQUINA / HORSE MEAT | 60 | 711 | 274 | 1.768 |
| MENUDENCIAS / OFFALS | | 357 | | |
| SUBPRODUCTO RESIDUAL COMESTIBLE / REMAINING EDIBLE BYPRODUCT | | | 18 | 36 |
| SUBPRODUCTO INDUSTRIALIZADO / INDUSTRIALIZED BYPRODUCT | 57 | 57 | | 53 |
| KUWAIT/KUWAIT | 157 | 852 | | 336 |
| CARNE BOVINA / BEEF | 74 | 701 | | 284 |

EXPORTACIONES TOTALES DEL SECTOR CÁRNICO - POR DESTINO

TOTAL MEAT EXPORTS - BY DESTINATION

2013 - 2014

Importe FOB (Miles de dólares)

FOB Value (Thousand dollars)

| DESTINO/DESTINATION | 2014 | | 2013 | |
|---|---------|----------------------|---------|----------------------|
| | Sep/Sep | Ene/Sep / Jan/Sep | Sep/Sep | Ene/Sep / Jan/Sep |
| CARNE OVINA / OVINE MEAT | 83 | 151 | | 53 |
| LIBERIA/LIBERIA | | | | 12 |
| SUBPRODUCTO RESIDUAL COMESTIBLE / REMAINING EDIBLE BYPRODUCT | | | | 12 |
| LÍBANO/LEBANON | 91 | 215 | | 944 |
| CARNE BOVINA / BEEF | | 27 | | |
| MENUDENCIAS / OFFALS | | | | 8 |
| SUBPRODUCTO RESIDUAL COMESTIBLE / REMAINING EDIBLE BYPRODUCT | | | | 138 |
| SUBPRODUCTO INDUSTRIALIZADO / INDUSTRIALIZED BYPRODUCT | 91 | 188 | | 798 |
| MALTA/MALTA | | 124 | | |
| CARNE BOVINA / BEEF | | 124 | | |
| MARRUECOS/MOROCCO | | 72 | | |
| SUBPRODUCTO INDUSTRIALIZADO / INDUSTRIALIZED BYPRODUCT | | 72 | | |
| MÉXICO/MEXICO | 84 | 10.118 | 85 | 444 |
| CARNE BOVINA / BEEF | 84 | 834 | 51 | 383 |
| CARNE OVINA / OVINE MEAT | | 34 | 34 | 62 |
| SUBPRODUCTO PRIMARIO PARA USO INDUSTRIAL / PRIMARY BYPRODUCT FOR INDUSTRIAL USE | | 9.251 | | |
| NAMIBIA/NAMIBIA | | | 15 | 431 |
| CARNE DE AVE / POULTRY MEAT | | | 15 | 325 |
| MENUDENCIAS / OFFALS | | | | 19 |
| SUBPRODUCTO RESIDUAL COMESTIBLE / REMAINING EDIBLE BYPRODUCT | | | | 87 |
| NIGERIA/NIGERIA | | | | 3.932 |
| SUBPRODUCTO PRIMARIO PARA USO INDUSTRIAL / PRIMARY BYPRODUCT FOR INDUSTRIAL USE | | | | 3.932 |
| NORUEGA/NORWAY | 476 | 8.348 | 471 | 6.722 |
| CARNE BOVINA / BEEF | 363 | 8.003 | 471 | 6.582 |
| CARNE OVINA / OVINE MEAT | 112 | 345 | | 140 |
| NUEVA ZELANDA/NEW ZEALAND | | 113 | | 756 |
| SUBPRODUCTO PRIMARIO PARA USO INDUSTRIAL / PRIMARY BYPRODUCT FOR INDUSTRIAL USE | | 35 | | 26 |
| SUBPRODUCTO INDUSTRIALIZADO / INDUSTRIALIZED BYPRODUCT | | 78 | | 730 |
| OMÁN/OMAN | | 1 | | 922 |
| CARNE OVINA / OVINE MEAT | | 1 | | |
| CARNE DE AVE / POULTRY MEAT | | | | 922 |
| PAKISTÁN/PAKISTAN | | 210 | | |
| SUBPRODUCTO INDUSTRIALIZADO / INDUSTRIALIZED BYPRODUCT | | 210 | | |
| PARAGUAY/PARAGUAY | | | | 47 |
| CARNE BOVINA / BEEF | | | | 6 |
| SUBPRODUCTO INDUSTRIALIZADO / INDUSTRIALIZED BYPRODUCT | | | | 41 |
| PAÍSES BAJOS/NETHERLANDS | 16.827 | 116.401 | 9.990 | 81.501 |
| CARNE BOVINA / BEEF | 12.937 | 110.025 | 9.457 | 75.213 |
| CARNE OVINA / OVINE MEAT | 555 | 2.810 | 230 | 1.753 |
| CARNE DE ANIMALES DE CAZA MENOR / SMALL GAME MEAT | | | 291 | 974 |

EXPORTACIONES TOTALES DEL SECTOR CÁRNICO - POR DESTINO

TOTAL MEAT EXPORTS - BY DESTINATION

2013 - 2014

Importe FOB (Miles de dólares)

FOB Value (Thousand dollars)

| DESTINO/DESTINATION | 2014 | | 2013 | |
|---|---------|----------------------|---------|----------------------|
| | Sep/Sep | Ene/Sep / Jan/Sep | Sep/Sep | Ene/Sep / Jan/Sep |
| SUBPRODUCTO PRIMARIO PARA USO INDUSTRIAL / PRIMARY BYPRODUCT FOR INDUSTRIAL USE | 3.335 | 3.565 | 12 | 3.379 |
| SUBPRODUCTO INDUSTRIALIZADO / INDUSTRIALIZED BYPRODUCT | | | | 160 |
| PRODUCTO CARNICO PARA ALIMENTACION ANIMAL / MEAT PRODUCT FOR ANIMAL FODDAGE | | | | 21 |
| PERÚ/PERU | 483 | 2.371 | 276 | 2.897 |
| CARNE BOVINA / BEEF | 330 | 1.347 | 203 | 1.480 |
| MENUDENCIAS / OFFALS | 130 | 962 | 58 | 1.254 |
| SUBPRODUCTO RESIDUAL COMESTIBLE / REMAINING EDIBLE BYPRODUCT | 22 | 61 | 15 | 153 |
| SUBPRODUCTO INDUSTRIALIZADO / INDUSTRIALIZED BYPRODUCT | 1 | 1 | | 10 |
| POLINESIA FRANCESA/FRENCH POLYNESIA | 692 | 6.055 | 860 | 4.442 |
| CARNE BOVINA / BEEF | 647 | 5.894 | 860 | 4.372 |
| CARNE OVINA / OVINE MEAT | 46 | 161 | | 62 |
| MENUDENCIAS / OFFALS | | | | 8 |
| POLONIA/POLAND | | 235 | 19 | 115 |
| CARNE BOVINA / BEEF | | 40 | | |
| MENUDENCIAS / OFFALS | | 31 | 3 | 20 |
| SUBPRODUCTO RESIDUAL COMESTIBLE / REMAINING EDIBLE BYPRODUCT | | 164 | 17 | 95 |
| PORTUGAL/PORTUGAL | 459 | 4.481 | 301 | 2.585 |
| CARNE BOVINA / BEEF | 459 | 4.481 | 301 | 2.585 |
| QATAR/QATAR | | 3 | | 398 |
| CARNE BOVINA / BEEF | | 3 | | |
| CARNE DE AVE / POULTRY MEAT | | | | 398 |
| REINO UNIDO/UNITED KINGDOM | 3.447 | 25.329 | 2.159 | 33.990 |
| CARNE BOVINA / BEEF | 3.256 | 23.230 | 1.743 | 32.496 |
| CARNE OVINA / OVINE MEAT | 191 | 1.879 | 416 | 1.494 |
| SUBPRODUCTO PRIMARIO PARA USO INDUSTRIAL / PRIMARY BYPRODUCT FOR INDUSTRIAL USE | | 79 | | |
| SUBPRODUCTO INDUSTRIALIZADO / INDUSTRIALIZED BYPRODUCT | | 141 | | |
| REPÚBLICA CHECA/CZECH REPUBLIC | | 197 | | 208 |
| CARNE BOVINA / BEEF | | 197 | | 208 |
| REPÚBLICA DEL CONGO/CONGO | 141 | 889 | | 847 |
| CARNE BOVINA / BEEF | | 142 | | 215 |
| CARNE OVINA / OVINE MEAT | | 70 | | 111 |
| CARNE DE AVE / POULTRY MEAT | 132 | 632 | | 432 |
| MENUDENCIAS / OFFALS | 1 | 7 | | |
| SUBPRODUCTO RESIDUAL COMESTIBLE / REMAINING EDIBLE BYPRODUCT | 8 | 37 | | 89 |
| REPÚBLICA DEMOCRÁTICA DEL CONGO/CONGO, THE DEMOCRATIC REPUBLIC OF THE | 59 | 59 | | |
| CARNE DE AVE / POULTRY MEAT | 59 | 59 | | |
| REPÚBLICA DOMINICANA/DOMINICAN REPUBLIC | | | 25 | 25 |
| PRODUCTO CARNICO PARA ALIMENTACION ANIMAL / MEAT PRODUCT FOR ANIMAL FODDAGE | | | 25 | 25 |
| REPÚBLICA POPULAR CHINA/CHINA | 33.646 | 305.558 | 34.796 | 290.400 |
| CARNE BOVINA / BEEF | 20.410 | 200.860 | 24.900 | 199.911 |
| CARNE OVINA / OVINE MEAT | 1.521 | 11.291 | 3.297 | 15.570 |

EXPORTACIONES TOTALES DEL SECTOR CÁRNICO - POR DESTINO

TOTAL MEAT EXPORTS - BY DESTINATION

2013 - 2014

Importe FOB (Miles de dólares)

FOB Value (Thousand dollars)

| DESTINO/DESTINATION | 2014 | | 2013 | |
|---|---------|----------------------|---------|----------------------|
| | Sep/Sep | Ene/Sep / Jan/Sep | Sep/Sep | Ene/Sep / Jan/Sep |
| MENUDENCIAS / OFFALS | 7.295 | 55.765 | 4.187 | 45.620 |
| SUBPRODUCTO RESIDUAL COMESTIBLE / REMAINING EDIBLE BYPRODUCT | 3.374 | 20.549 | 861 | 7.140 |
| SUBPRODUCTO PRIMARIO PARA USO INDUSTRIAL / PRIMARY BYPRODUCT FOR INDUSTRIAL USE | 36 | 4.864 | 596 | 8.617 |
| SUBPRODUCTO INDUSTRIALIZADO / INDUSTRIALIZED BYPRODUCT | 1.011 | 12.229 | 956 | 13.542 |
| SENEGAL/SENEGAL | 18 | 94 | | 29 |
| CARNE BOVINA / BEEF | 18 | 94 | | 29 |
| SEYCHELLES/SEYCHELLES | | 99 | | 75 |
| CARNE OVINA / OVINE MEAT | | 99 | | 75 |
| SINGAPUR/SINGAPORE | 92 | 1.498 | 132 | 1.466 |
| CARNE BOVINA / BEEF | 92 | 1.483 | 120 | 1.442 |
| MENUDENCIAS / OFFALS | | 14 | 13 | 24 |
| SUDÁFRICA/SOUTH AFRICA | 150 | 3.377 | 789 | 10.142 |
| CARNE BOVINA / BEEF | 67 | 2.465 | 663 | 2.895 |
| SUBPRODUCTO RESIDUAL COMESTIBLE / REMAINING EDIBLE BYPRODUCT | 83 | 879 | 95 | 811 |
| SUBPRODUCTO PRIMARIO PARA USO INDUSTRIAL / PRIMARY BYPRODUCT FOR INDUSTRIAL USE | | 32 | 31 | 6.437 |
| SUECIA/SWEDEN | 2.767 | 19.975 | 1.453 | 17.581 |
| CARNE BOVINA / BEEF | 2.767 | 19.791 | 1.453 | 17.362 |
| CARNE OVINA / OVINE MEAT | | 184 | | 194 |
| SUBPRODUCTO RESIDUAL COMESTIBLE / REMAINING EDIBLE BYPRODUCT | | | | 24 |
| SUIZA/SWITZERLAND | 1.752 | 18.716 | 1.980 | 21.299 |
| CARNE BOVINA / BEEF | 1.670 | 17.812 | 1.909 | 20.739 |
| CARNE OVINA / OVINE MEAT | | 83 | | 72 |
| CARNE EQUINA / HORSE MEAT | 81 | 820 | 71 | 250 |
| CARNE DE ANIMALES DE CAZA MENOR / SMALL GAME MEAT | | | | 123 |
| SUBPRODUCTO RESIDUAL COMESTIBLE / REMAINING EDIBLE BYPRODUCT | 1 | 1 | | |
| SUBPRODUCTO PRIMARIO PARA USO INDUSTRIAL / PRIMARY BYPRODUCT FOR INDUSTRIAL USE | | | | 116 |
| TAILANDIA/THAILAND | 146 | 600 | | 268 |
| MENUDENCIAS / OFFALS | 45 | 272 | | 225 |
| SUBPRODUCTO RESIDUAL COMESTIBLE / REMAINING EDIBLE BYPRODUCT | 14 | 26 | | |
| SUBPRODUCTO PRIMARIO PARA USO INDUSTRIAL / PRIMARY BYPRODUCT FOR INDUSTRIAL USE | 86 | 302 | | 43 |
| TOGO/TOGO | | | | 10 |
| SUBPRODUCTO RESIDUAL COMESTIBLE / REMAINING EDIBLE BYPRODUCT | | | | 10 |
| TRINIDAD Y TOBAGO/TRINIDAD AND TOBAGO | 1.746 | 7.708 | 823 | 6.615 |
| CARNE BOVINA / BEEF | 1.746 | 7.708 | 823 | 6.611 |
| CARNE OVINA / OVINE MEAT | | | | 4 |
| TURQUÍA/TURKEY | 137 | 452 | 127 | 456 |
| CARNE BOVINA / BEEF | 137 | 269 | 127 | 333 |
| CARNE OVINA / OVINE MEAT | | 149 | | 21 |
| MENUDENCIAS / OFFALS | | 34 | | 6 |

EXPORTACIONES TOTALES DEL SECTOR CÁRNICO - POR DESTINO

TOTAL MEAT EXPORTS - BY DESTINATION

2013 - 2014

Importe FOB (Miles de dólares)

FOB Value (Thousand dollars)

| DESTINO/DESTINATION | 2014 | | 2013 | |
|--|---------|----------------------|---------|----------------------|
| | Sep/Sep | Ene/Sep / Jan/Sep | Sep/Sep | Ene/Sep / Jan/Sep |
| SUBPRODUCTO RESIDUAL COMESTIBLE / REMAINING EDIBLE BYPRODUCT | | | | 20 |
| SUBPRODUCTO INDUSTRIALIZADO / INDUSTRIALIZED BYPRODUCT | | | | 74 |
| TÚNEZ/TUNISIA | 167 | 1.021 | 148 | 459 |
| CARNE BOVINA / BEEF | | 134 | | |
| CARNE OVINA / OVINE MEAT | 167 | 886 | 148 | 459 |
| UCRANIA/UKRAINE | | | | 100 |
| CARNE BOVINA / BEEF | | | | 100 |
| VENEZUELA/VENEZUELA | 3.070 | 67.580 | 3.150 | 47.305 |
| CARNE BOVINA / BEEF | 843 | 41.840 | 2.669 | 33.339 |
| CARNE DE AVE / POULTRY MEAT | 2.226 | 25.740 | 481 | 13.966 |
| VIETNAM/VIET NAM | 195 | 2.966 | 334 | 2.566 |
| CARNE BOVINA / BEEF | | 3 | | 3 |
| CARNE EQUINA / HORSE MEAT | | 657 | 213 | 347 |
| MENUDENCIAS / OFFALS | | 820 | 4 | 196 |
| SUBPRODUCTO RESIDUAL COMESTIBLE / REMAINING EDIBLE BYPRODUCT | | 24 | | 10 |
| SUBPRODUCTO INDUSTRIALIZADO / INDUSTRIALIZED BYPRODUCT | 195 | 1.462 | 117 | 2.011 |
| ZONA NEUTRAL PALESTINA/PALESTINIAN NEUTRAL ZONE | | 477 | 142 | 2.200 |
| CARNE BOVINA / BEEF | | 270 | 142 | 1.619 |
| CARNE OVINA / OVINE MEAT | | | | 61 |
| MENUDENCIAS / OFFALS | | 207 | | 521 |
| TOTAL | 160.853 | 1.376.434 | 115.556 | 1.268.040 |